



South Elevation



East Elevation



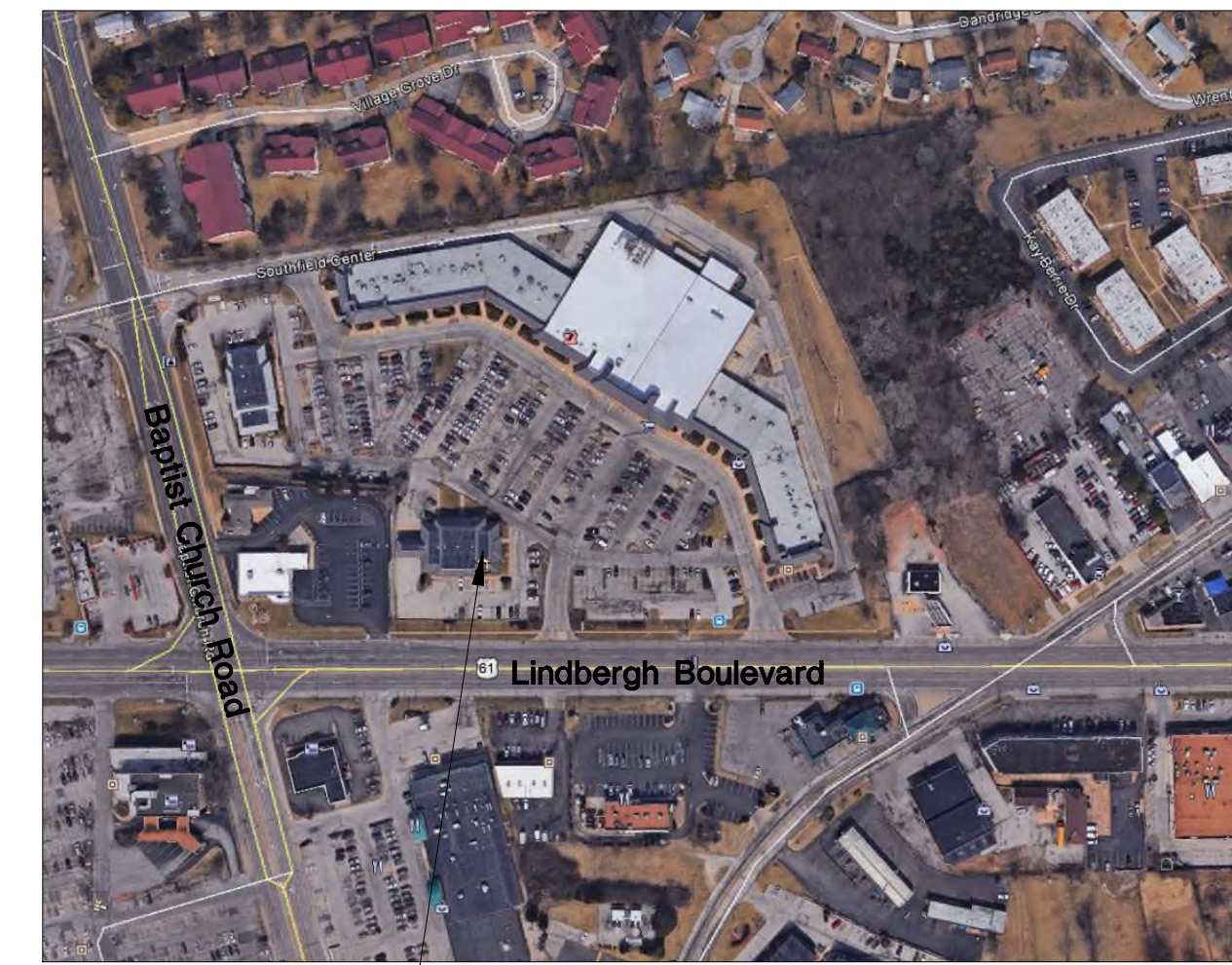
North Elevation

THESE DOCUMENTS HAVE BEEN PREPARED FOR INFORMATION ONLY AND ARE NOT PROVIDED FOR CONSTRUCTION. ALL DIMENSIONS AND EXISTING CONDITIONS MUST BE FIELD VERIFIED PRIOR TO ANY CONSTRUCTION.

FIELD MEASUREMENTS ARE RECORDED TO THE NEAREST 1/4" AS DOCUMENTED IN THE FINAL CAD (DWG) DOCUMENT. DIMENSIONS SHOWN ARE ROUNDED TO THE NEAREST 1" FOR CLARITY.

GENERAL INFORMATION:

NO. OF LEVELS: 1
 RESTROOM (ADA) COMPLIANCE: Complies with the addition of vertical grab bars at toilets.
 STRUCTURAL SPOT ELEVATIONS *REFER TO PLAN FOR LOCATIONS
 BS = BOTTOM OF STRUCT.
 BD = BOTTOM OF DECKING
 FIRE ALARM: NO - local smoke detectors
 FIRE PROTECTION (SPRINKER): NO
 WATER METER: N/A
 WATER HEATER: 10 Gallon Electric
 GAS METER: N/A
 EXIT / EMERG LIGHTING: YES



5479 Southfield Center
Location Plan
 Not To Scale



Men's Restroom



Women's Restroom



Panel MLO

Panel MLO	
Panel Schedule	
1. Navy Lighting	2. Army Lighting
3. Navy Storage	4. Corridor Lighting
5. Navy Office & Recruiting Clerks	6. Marine & Army Office Lighting
7.	8. Display, Janitor & Storage Receipt
9.	10. Bathroom & Storage Lighting
11.	12. Army Recruiting Clerks
13.	14. Army Office & Navy Storage Receipt
15.	16. Army & Marine Training Clerks
17.	18. Marine Recruiting & Army Training
19. Reception	20. Smoke Detectors
21.	22. Navy Receptions
23.	24. Navy Receptions
25.	26. Water Heater
27.	28. Water Center
29.	30. Women's Hand Dryer
31.	32. Men's Hand Dryer
33.	34.
35.	36.
37.	38.
39.	40.
41.	42.
43.	44.
45.	46.
47.	48.
49.	50.
51.	52.
53.	54.
55.	56.
57.	58.
59.	60.
61.	62.
63.	64.
65.	66.
67.	68.
69.	70.
71.	72.
73.	74.
75.	76.
77.	78.
79.	80.
81.	82.
83.	84.
85.	86.
87.	88.
89.	90.
91.	92.
93.	94.
95.	96.
97.	98.
99.	100.



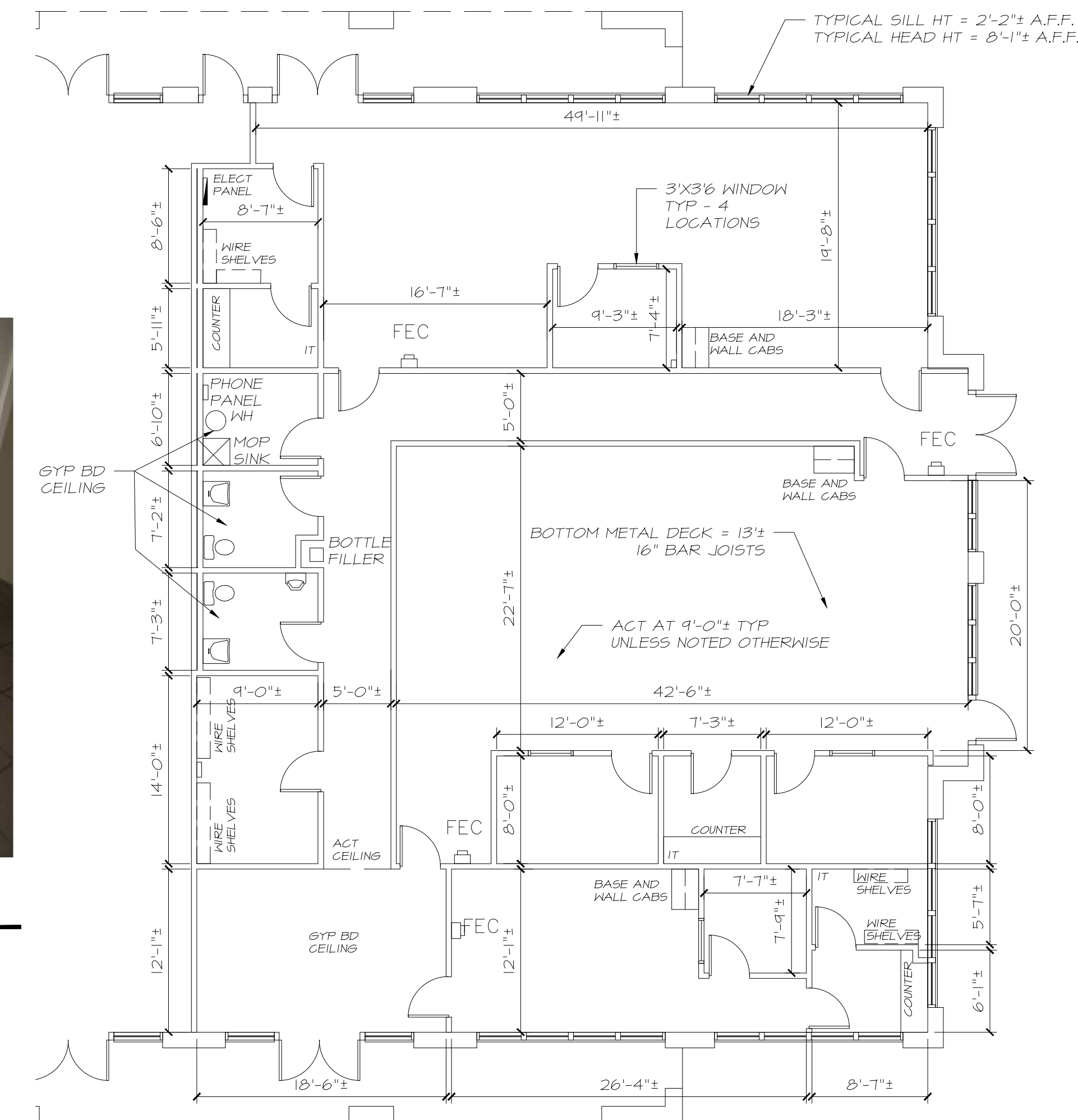
Jan Closet



Phone Service



Bottle Filler



Existing Floor Plan
 1/8"=1'-0"

EXISTING ELECTRICAL SUMMARY							
COMPONENT	MANUFACTURE	CATALOG NO.	VOLTAGE	AMPS	PHASING	BREAKERS	COMMENTS
PANEL MLO	SIEMENS	P1C42ML250CTS	208/120	250	N/A	42	

- FINISH MATERIAL SUMMARY:
- WOOD WINDOWS - NEED SOME MAINTENANCE WORK ON EXTERIOR.
 - FLOORING IS CARPET AND VCT WITH VINYL BASE. BATHROOM IS QUARRY TILE WITH VINYL BASE
 - CEILING ARE ACT AND GYP BOARD AT 9'-0"± A.F.F.
 - DOORS ARE 3' X 6'-8" 6 PANEL WOOD DOORS IN HM FRAMES
 - INTERIOR WINDOWS ARE 3'W X 3'-6" H CLEAR GLASS IN HM FRAMES.

Existing Conditions for:

5476 Southfield Center

8-7-17

Existing Plan
EX1

5479 Southfield Center

2017.131