

DOOR SCHEDULE

MARK	SIZE	TYPE	FINISH	FRAME	HARDWARE	
					GROUP	FINISH
101	3'-0" x 8'-0" EXISTING	A	1	9	1	19
102	3'-0" x 7'-0" EXISTING	C	5	14	5	19
103	3'-0" x 7'-0"	B	5	14	3	18
104	3'-0" x 7'-0"	B	5	14	3	18

DOOR FINISHES

1	MATCH EXISTING
2	KAWNEER CLEAR ANODIZE # 14
3	KAWNEER BLACK ANODIZE # 29
4	SEMI-GLOSS LATEX
5	PAINT SAFETY RED (P1)
6	SELECTED BY OWNER
7	HOLLY BERRY RED LAMINATE

FRAME MATERIAL & FINISH

8	SEE INTERIOR ELEVATION FOR TRIM (P2)
9	ALUMINUM STOREFRONT TO MATCH EXISTING
10	KAWNEER BLACK ANODIZE # 29
11	HOLLOW METAL WITH PAINT (P1)
12	HOLLY BERRY RED LAMINATE
13	ALUMINUM WITH SHOP PAINT RED FINISH
14	HOLLOW METAL WITH NEW PAINTED FINISH (P1)

HARDWARE FINISHES

15	BRIGHT BRASS CLEAR COATING
16	SATIN BRASS CLEAR COATING
17	BRIGHT CHROMIUM PLATED
18	SATIN ALUMINUM ANODIZED
19	MATCH EXISTING

HARDWARE SETS (EQUIVALENT SPECIFICATIONS MAY BE SUBSTITUTED)

1. EXIT:
ADD PANIC HARDWARE W/ KEYED DOGGING (IF NOT EXISTING AND REQUIRED)
2. EXIT: (NOTE USED)
PEEP SCOPE
PROTECTION PLATE 36x12 ALUMINUM DECK PLATE (PUSH SIDE)
PANIC DEVICE WITH KEYED DOGGING
SELF CLOSING DEVICE
ADA THRESHOLD
WEATHERSTRIPPING
EXTERIOR LEVER AND LOCK

3. RESTROOM:
LOCKSET: SCHLAGE BATH/BATHROOM LOCK # AL40S W/ NEPTUNE LEVER HANDLE
HINGE: HAGER BB1279 - 4 1/2, x4 1/2, 1/2 PAIR
PROTECTION PLATE: 30x12 ALUMINUM DECK PLATE (EACH SIDE)
SELF CLOSING DEVICE
DOOR MOUNTED STOP - STANLEY DPB9060
COAT HOOK - SEE A-4 FOR SPECIFICATION

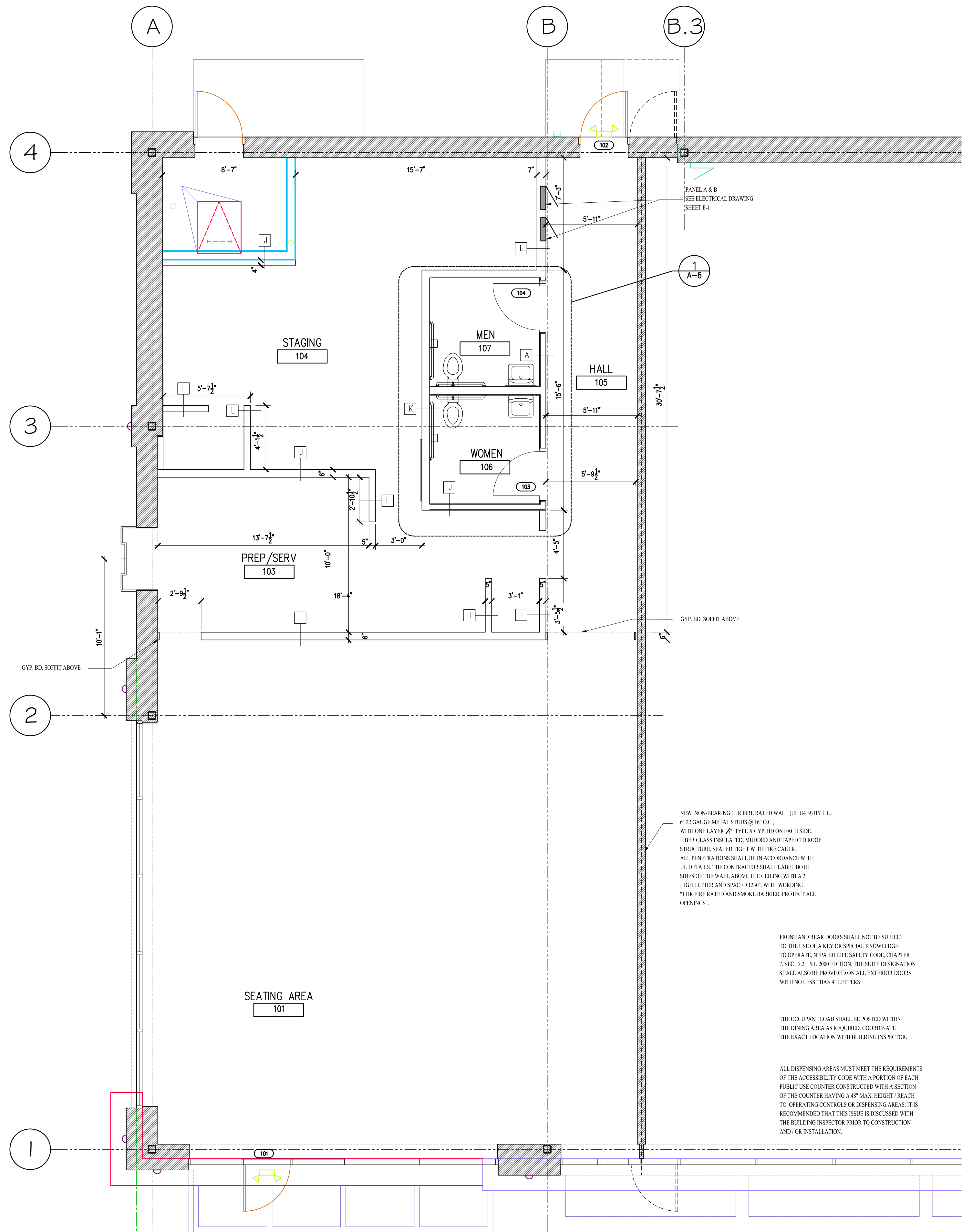
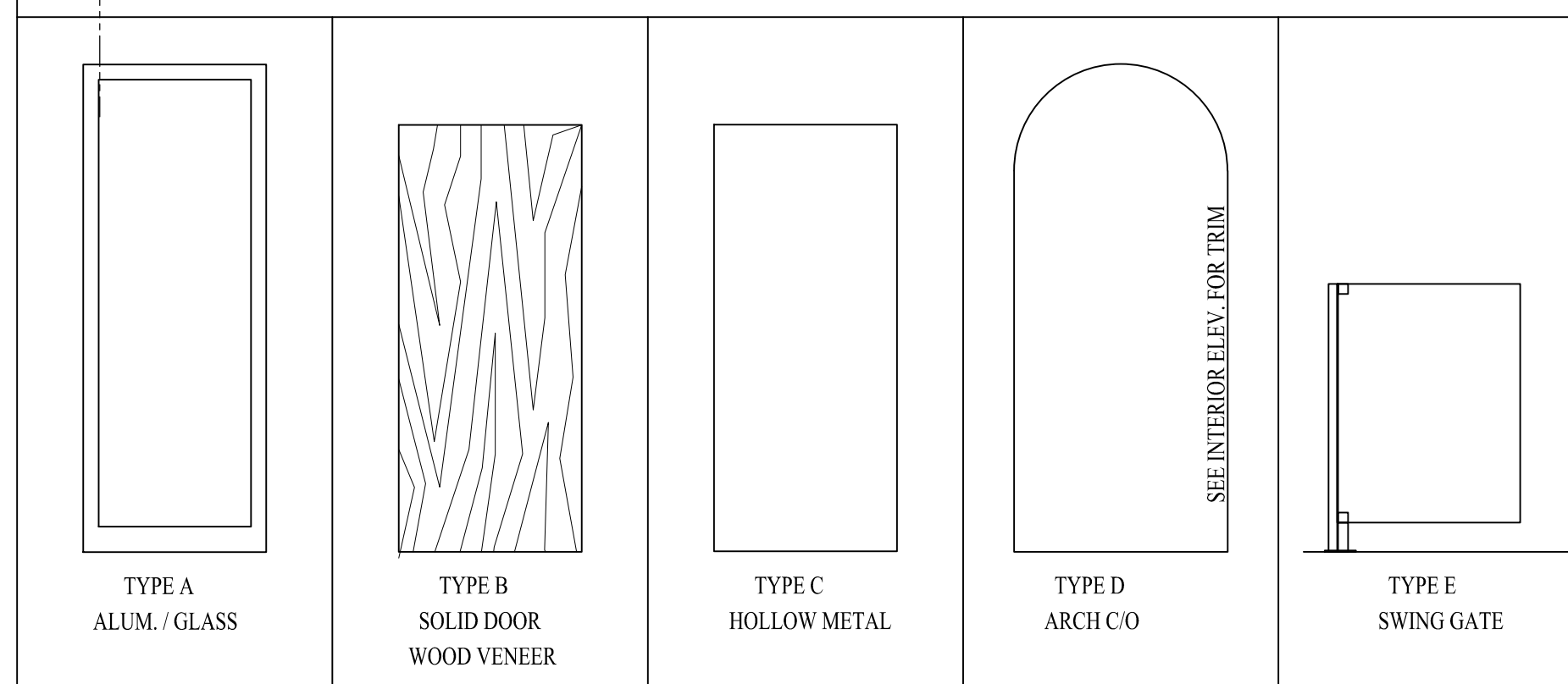
4. UTILITY CLOSET:
PASSAGE SET WITH NEPTUNE LEVER HANDLE
HINGES: HAGER BB1279 - 4 1/2 x 4 1/2, 3 PAIR
PROTECTION PLATE 30 x 12 ALUMINUM DECK PLATE (EACH SIDE)

5. EXIT:
ADD PEEP SCOPE
ADD PROTECTION PLATE 36x12 ALUMINUM DECK PLATE (PUSH SIDE)
ADD PANIC DEVICE WITH KEYED DOGGING

General Construction Notes

1. RADIUS ALL PLASTIC LAMINATED COUNTER TOPS WITH 3" RADIUS.
2. PROVIDE (2) 5B, 210ABC DRY CHEMICAL FIRE EXTINGUISHER MOUNTED ON WALL HOOK AS LOCATED ON PLAN.
3. G.C. IS RESPONSIBLE FOR INSTALLING THE COMPLETE INTERIOR SIGN PACKAGE INCLUDING BUT NOT LIMITED TO WALL DECOR, MURAL, T.V. BRACKETS AND MENU BOARD.
4. ALL MATERIALS AND PRODUCTS ARE TO BE INSTALLED IN STRICT ACCORDANCE WITH MANUFACTURER'S RECOMMENDATIONS. ALL TILE SHALL BE INSTALLED PER THE TILE COUNCIL OF NORTH AMERICA STANDARD DETAILS.

DOOR TYPES



1 FLOOR PLAN
A-3 SCALE: 1/4"=1'-0"

NEW NON-BEARING 1HR FIRE RATED WALL (UL 1449) BY L.L.
#2 GUAGE METAL STUDS @ 16" O.C.
WITH ONE LAYER 1/2" TYPE X GYP. BD ON EACH SIDE.
FIBER GLASS INSULATED, MUDDED AND TAPED TO ROOF
STRUCTURE, SEALED TIGHT WITH FIRE CAULK.
ALL PENETRATIONS SHALL BE IN ACCORDANCE WITH
UL DETAILS. THE CONTRACTOR SHALL LABEL BOTH
SIDES OF THE WALL ABOVE THE CEILING WITH A 2"
HIGH LETTER AND SPACED 12" WITH WORDING
"1 HR FIRE RATED AND SMOKE BARRIER, PROTECT ALL
OPENINGS".

FRONT AND REAR DOORS SHALL NOT BE SUBJECT
TO THE USE OF A KEY OR SPECIAL KNOWLEDGE
TO OPERATE, NFPA 101 LIFE SAFETY CODE, CHAPTER
7, SEC. 7.2.1.5.1, 2009 EDITION. THE SUITE DESIGNATION
SHALL ALSO BE PROVIDED ON ALL EXTERIOR DOORS
WITH NO LESS THAN 4" LETTERS.

THE OCCUPANT LOAD SHALL BE POSTED WITHIN
THE DINING AREA AS REQUIRED. COORDINATE
THE EXACT LOCATION WITH BUILDING INSPECTOR.

ALL DISPENSING AREAS MUST MEET THE REQUIREMENTS
OF THE ACCESSIBILITY CODE WITH A PORTION OF EACH
PUBLIC USE COUNTER CONSTRUCTED WITH A SECTION
OF THE COUNTER HAVING A 48" MAX. HEIGHT / REACH
TO OPERATING CONTROLS OR DISPENSING AREAS. IT IS
RECOMMENDED THAT THIS ISSUE IS DISCUSSED WITH
THE BUILDING INSPECTOR PRIOR TO CONSTRUCTION
AND/OR INSTALLATION.

ISSUED FOR:	DATE:
ISSUED FOR REVIEW	10-19-16

Licence expires: 11/30/2016

INTERIOR UP-FIT
FIREHOUSE SUBS
FOUNDED BY FIREMEN
4823 W. 79 St., BURBANK, IL. 60459

OWNER NAME:
BURBANK PLAZA STATION, LLC
11501 NORTHLAKE DRIVE
CINCINNATI, OH. 45249

CLIENT NAME:
SHAKER SUBS ELITE, BURBANK, INC.
4823 W. 79 St.,
BURBANK, IL. 60459

ARCHITECT:
YALA Architects P.C.
P: 847.387.9903 38 Pentwater Drive,
South, Barrington,
Illinois. 60010

MECHANICAL ENGINEER
Blake MEP
P: 847.612.2674
Email: blakeMEP@gmail.com

Date:
Scale: AS SHOWN
Drawn By:
Job #: XXXX-XXX
Sheet Title:
FLOOR PLAN &
DOOR SCHEDULE
Sheet:
A-2