

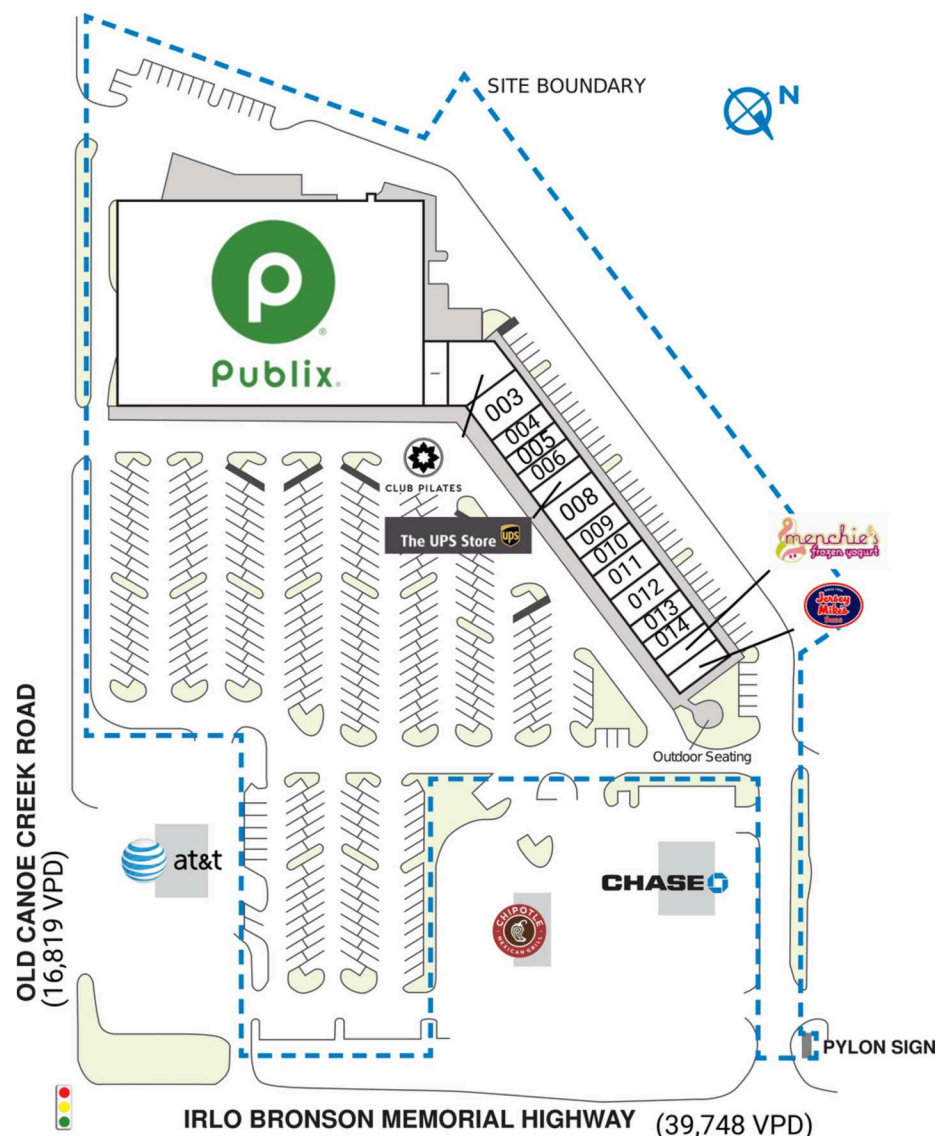
# PUBLIX AT ST. CLOUD

4401 13th Street | St. Cloud, FL 34769

SPACE	TENANT	SQ. FT.
001	Publix	54,379 SF
002	Verizon	1,200 SF
002B	Club Pilates	2,841 SF
003	Axiom Bank	1,200 SF
003B	AVAILABLE	1,200 SF
004	Metropol Cleaners	1,200 SF
005	Central Nails	1,200 SF
006	The Cut Factory	1,200 SF
007	The UPS Store	1,200 SF
008	Party Liquors	2,400 SF
009	Grill and Sushi	1,200 SF
010	Tobacco Unlimited	1,200 SF
011	Dr. Angelika Welch, DVM	1,669 SF
012	Nature's Table Cafe	1,890 SF
013	Anthony's Pizzeria	1,200 SF
014	Great Wall Restaurant	1,200 SF
015	Menchie's Frozen Yogurt	1,200 SF
016	Jersey Mike's Subs	1,200 SF
TOTAL SQ. FT.		78,779

SITE LEGEND	
<span style="background-color: orange; border: 1px solid black; display: inline-block; width: 15px; height: 10px;"></span> Available	<span style="background-color: white; border: 1px solid black; display: inline-block; width: 15px; height: 10px;"></span> Occupied
<span style="background-color: lightblue; border: 1px solid black; display: inline-block; width: 15px; height: 10px;"></span> Leased (not occupied)	<span style="background-color: gray; border: 1px solid black; display: inline-block; width: 15px; height: 10px;"></span> Owned by Others
<span style="border: 2px dashed blue; display: inline-block; width: 20px; height: 10px;"></span> Site Boundary	



DISCLAIMER - This site plan is for general information purposes only and is not intended to constitute representations and warranties by Landlord as to the ownership of the real property depicted herein or the identity or nature of any occupants thereof.