



SIZE

169,478 square feet

DEMOGRAPHICS

	1 mile	3 mile	5 mile
<b>Population</b>	6,638	60,828	140,349
<b>Households</b>	2,166	22,704	51,355
<b>Median HH Income (\$)</b>	138,654	136,447	129,843

MAJOR TENANT(S)

Stop & Shop  
T.J.Maxx  
HomeGoods  
Smashburger

LEASING CONTACT

Scott Faloni  
Mobile (410) 693-3248  
sfaloni@phillipsedison.com

MORE INFO

www.phillipsedison.com



LOCATION

500 Route 23 North | Pompton Plains, NJ 07444

PROPERTY HIGHLIGHTS

- 169,478-square-foot center anchored by Super Stop & Shop
- National tenants include T.J.Maxx, HomeGoods, Jersey Mike's, Popeyes, Sally Beauty Supply and Smashburger
- More than 60,800 residents in the three-mile radius with an average household income over \$168,700
- Located near the intersection of Route 23 N (54,900 VPD) and Jackson Avenue (7,100 VPD)
- More than 2.4 million visits to the center in the last 12 months according to Placer.ai data



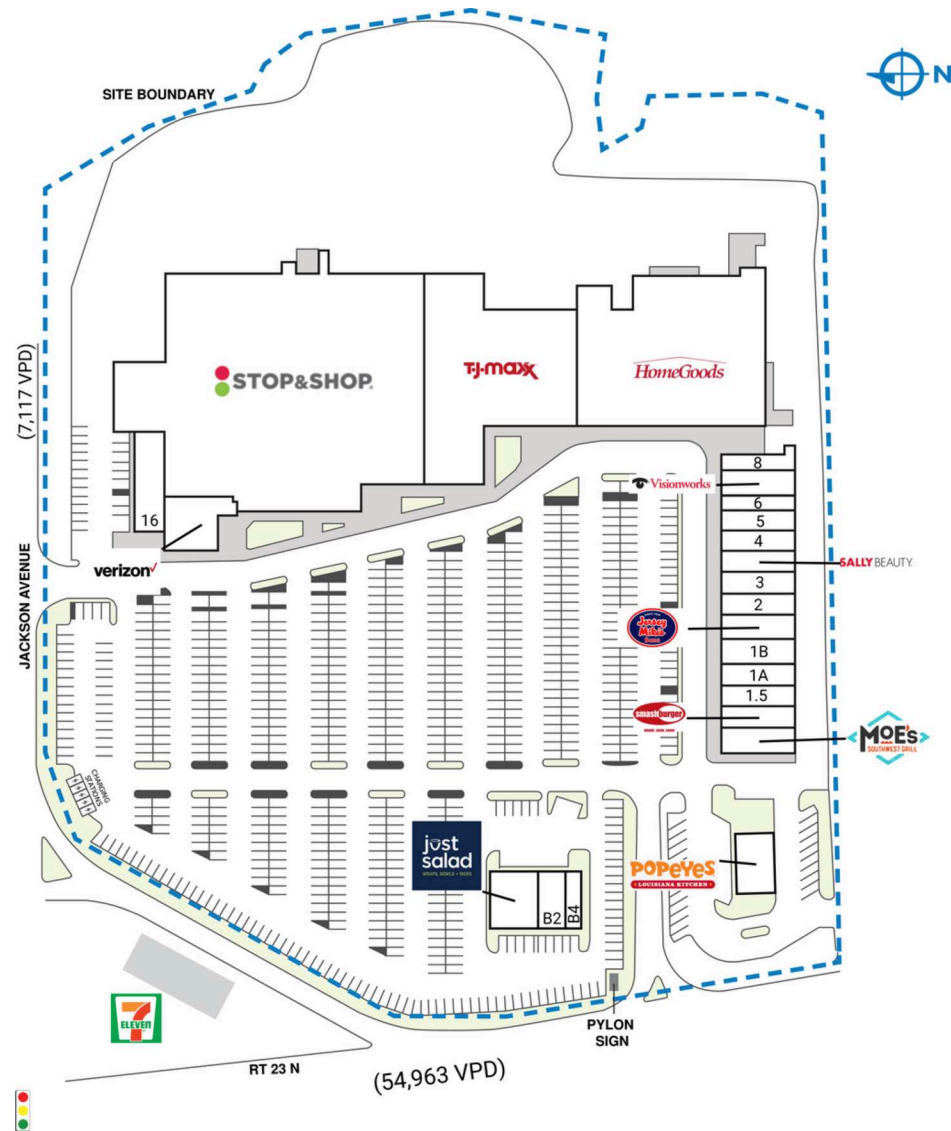
# PLAZA 23

500 Route 23 North | Pompton Plains, NJ 07444

SPACE	TENANT	SQ. FT.
A1	Popeyes	2,510 SF
B1	Just Salad	2,297 SF
B2	Optimum	2,412 SF
B4	Tropical Smoothie	1,224 SF
1	Moe's Southwest Grill	2,400 SF
1.2	Smashburger	1,980 SF
1.5	Foot Reflexology and Body Work	1,620 SF
1A	Pok?Stop	1,807 SF
1B	Playa Bowls	1,800 SF
1C	Jersey Mike's Subs	1,600 SF
2	V & J Pizza	2,400 SF
3	Wayne Bedding	2,400 SF
3A	Sally Beauty Supply	1,600 SF
4	Escape Salon	1,600 SF
5	Paragon Jewelers	1,600 SF
6	Pompton Family Dental	1,200 SF
7	Visionworks	2,400 SF
8	New Paradise Nail & Spa	1,200 SF
9	HomeGoods	30,811 SF
12	T.J.Maxx	31,988 SF
13	Stop & Shop	65,031 SF
15	Verizon	3,888 SF
16	Buy Rite Liquors	3,710 SF
<b>TOTAL SQ. FT.</b>		<b>169,478</b>

SITE LEGEND	
<span style="display:inline-block; width:15px; height:15px; background-color:orange; border:1px solid black;"></span> Available	<span style="display:inline-block; width:15px; height:15px; background-color:white; border:1px solid black;"></span> Occupied
<span style="display:inline-block; width:15px; height:15px; background-color:blue; border:1px solid black;"></span> Leased (not occupied)	<span style="display:inline-block; width:15px; height:15px; background-color:gray; border:1px solid black;"></span> Owned by Others
<span style="display:inline-block; width:15px; height:15px; border:2px dashed blue;"></span> Site Boundary	



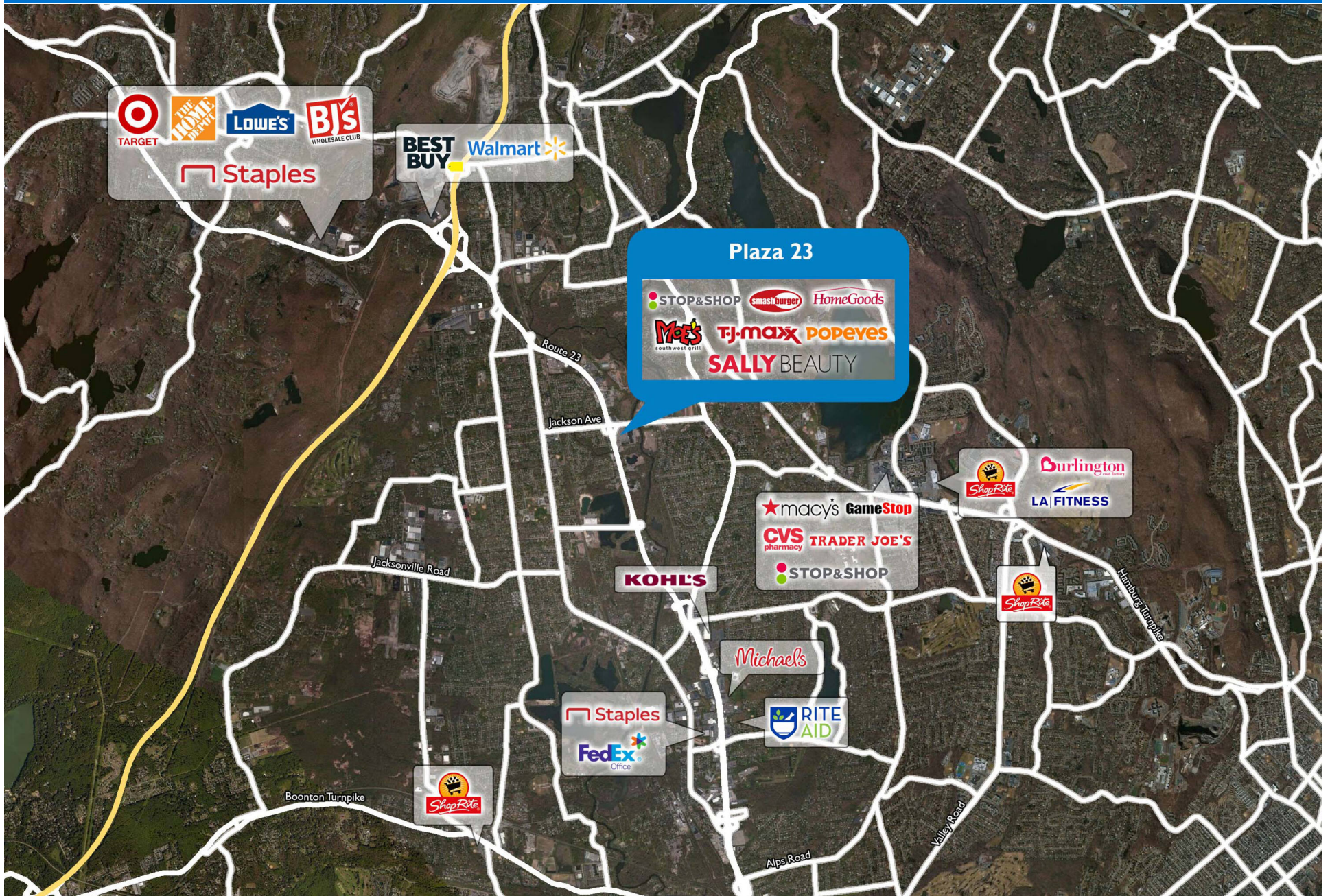
DISCLAIMER - This site plan is for general information purposes only and is not intended to constitute representations and warranties by Landlord as to the ownership of the real property depicted herein or the identity or nature of any occupants thereof.



PROPOSED OUTPARCEL  
AVAILABLE

# PLAZA 23

500 Route 23 North | Pompton Plains, NJ 07444



# Demographic Summary Report

1990 - 2000 Census, 2023 Estimates & 2028 Projections

Calculated using TAS Retrieval Retrieval

Apr 17, 2024



Latitude: 40.967892

Longitude: -74.28271

Plaza 23 Pompton Plains_NJ		1.00 Mile Radius	3.00 Mile Radius	5.00 Mile Radius
Population	Q4 2023 Estimated Population	6,638	60,828	140,349
	2028 Projected Population	6,589	60,568	140,421
	2010 Census Population	6,438	59,846	138,586
	2000 Census Population	6,460	56,721	134,484
	1990 Census Population	6,293	52,383	124,321
	Historical Annual Growth 1990 to 2000	0.26%	0.80%	0.79%
	Historical Annual Growth 2000 to 2010	-0.03%	0.54%	0.30%
	Estimated Annual Growth 2010 to 2023	0.22%	0.12%	0.09%
	Projected Annual Growth 2023 to 2028	-0.15%	-0.09%	0.01%
	Median Age	44.6	46.0	45.4
Households	Q4 2023 Estimated Households	2,166	22,704	51,355
	2028 Projected Households	2,150	22,601	51,341
	2010 Census Households	2,172	22,433	50,529
	2000 Census Households	2,238	20,043	47,051
	1990 Census Households	2,111	17,796	41,924
	Historical Annual Growth 1990 to 2000	0.58%	1.20%	1.16%
	Historical Annual Growth 2000 to 2010	-0.30%	1.13%	0.72%
	Estimated Annual Growth 2010 to 2023	-0.02%	0.09%	0.12%
	Projected Annual Growth 2023 to 2028	-0.14%	-0.09%	-0.01%
	Population per Household	2.94	2.64	2.65
Population by Race	White	79.0%	78.2%	75.7%
	Black or African American	1.0%	1.5%	2.2%
	Asian & Pacific Islander	5.6%	6.2%	6.9%
	Other Races	2.5%	3.0%	2.8%
	Hispanic Population	11.9%	11.2%	12.4%
Income	Average Household Income	\$166,934	\$168,752	\$164,864
	Median Household Income	\$138,654	\$136,447	\$129,843
	Per Capita Income	\$56,149	\$63,731	\$61,424
Education (Age 25+)	Elementary	1.9%	2.1%	2.4%
	Some High School	4.2%	1.9%	2.4%
	High School Graduate	25.4%	23.4%	23.6%
	Some College	17.1%	14.3%	14.1%
	Associates Degree Only	7.6%	6.6%	6.1%
	Bachelors Degree Only	29.3%	31.7%	31.3%
	Graduate Degree	14.5%	20.0%	20.2%
Business	Number of Businesses	309	2,034	4,637
	Total Number of Employees	3,958	22,272	51,259
	Employees per Business	12.80	10.95	11.05
	Residential Population per Business	21.46	29.90	30.27

This report was produced using data from private and government sources deemed to be reliable and is herein provided without representation or warranty.