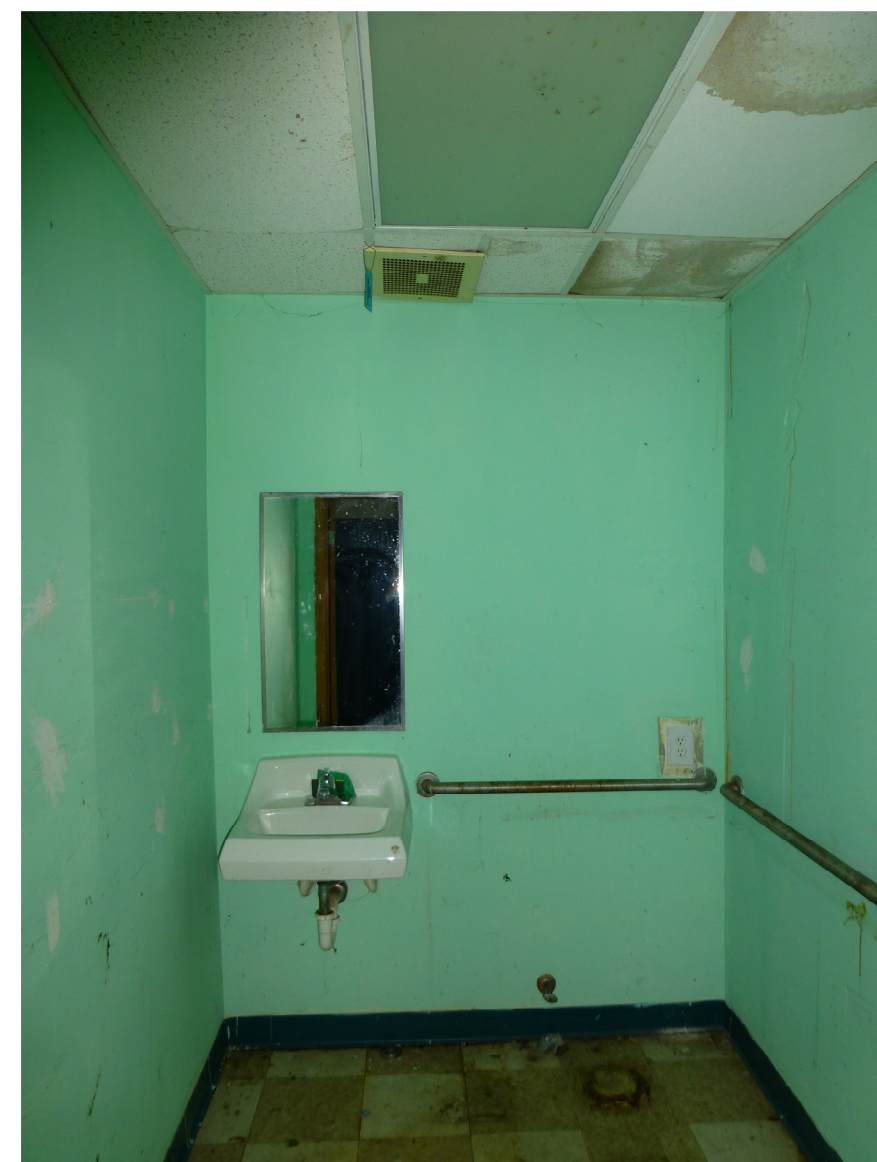




**Front of Unit 230**  
NTS



**Bathroom 1**  
NTS



**Bathroom 2**  
NTS



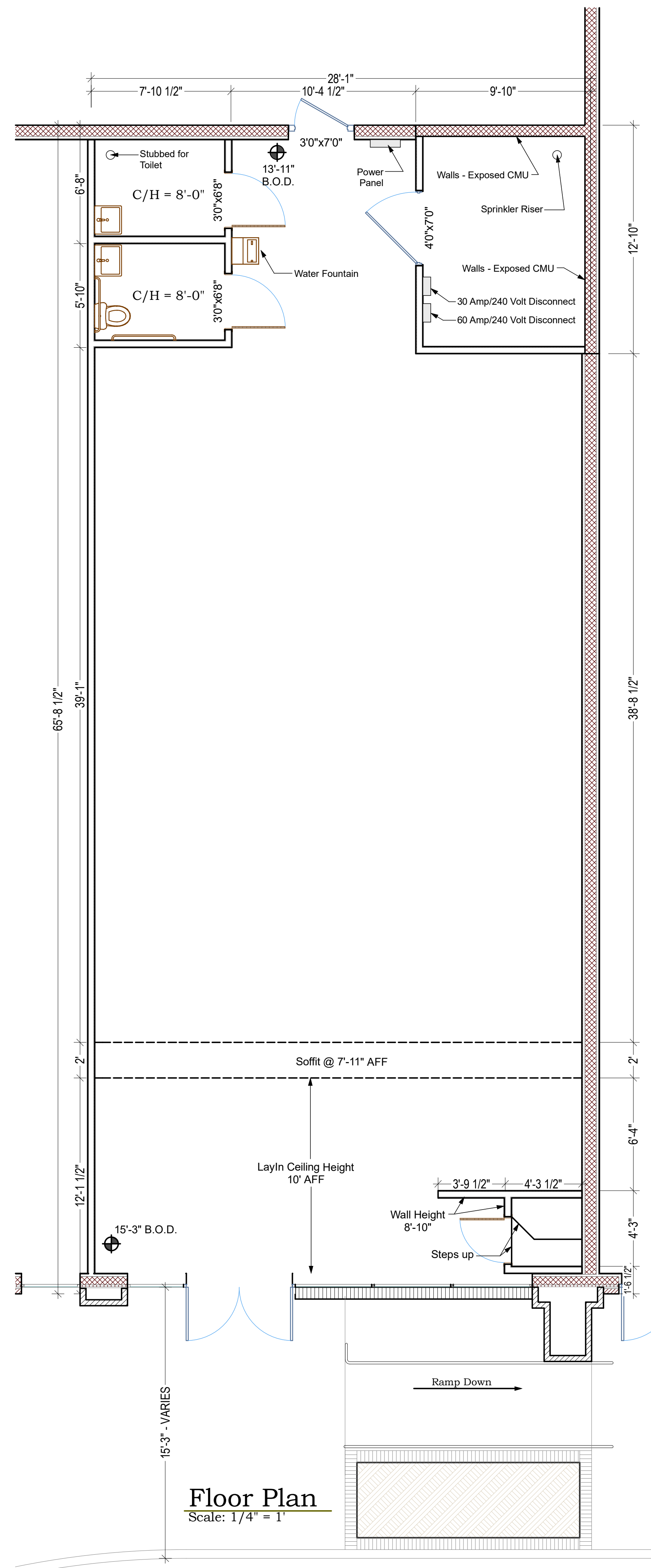
**MAIN PANEL**  
208/120 Volt Elec.  
NTS



**Meters at Back of Unit 230**  
NTS



**Disconnects 60 Amp/240 Volt & 30 Amp/240 Volt**  
NTS



**Floor Plan**  
Scale: 1/4" = 1'

UNIT 230		1,825 SF
EXISTING FINISHES		
FLOORING	CARPET - Front to Soffit	CONDITION POOR
	EXPOSED CONCRETE	FAIR/POOR
	VCT - BATHROOMS	
WALLS		
	PAINT	FAIR/POOR
WALL BASE		
	RUBBER - FRONT & BATHROOMS	FAIR/POOR
CEILING		
	2' x 4' LayIn Front to Soffit	GOOD/FAIR
	2' x 4' LayIn Bathrooms	FAIR/POOR
	ALL OTHER OPEN TO DECK	N/A
WINDOWS		
	ALUMINUM W/1" INSULATED GLAZING	GOOD

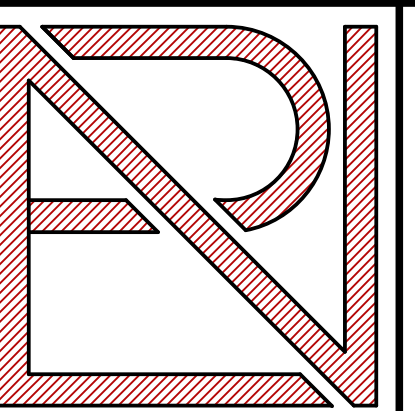
AMERICAN DISABILITIES COMPLIANCE	YES
CONSTRUCTION TYPE	TYPE III
BUILDING FIREPROOFED	YES
FIRE ALARM	NO
SPRINKLER SYSTEM	YES

CEILING HEIGHT	10'-0"
	(Except where noted Otherwise on Floor Plan)
NUMBER OF STORIES	1
DECK HEIGHT (at back of unit)	13'-10"

- NOTES:**
1. THIS DRAWING IS FOR DIAGRAMMATIC PURPOSES ONLY AND IS INTENDED TO SHOW THE GENERAL CONFIGURATION OF THE SPACE.
  2. ALL DIMENSIONS MUST BE FIELD VERIFIED BY THE TENANT OR THEIR CONTRACTOR.
  3. ALL UTILITY LOCATIONS AND FIELD CONDITIONS MUST BE VERIFIED BY THE TENANT BEFORE THE DEVELOPMENT OF TENANT BUILD OUT DRAWINGS.



**Site Plan**  
Scale: NTS



**ROBERT NOBLE ARCHITECT A.I.A.**

119 SOUTH BROAD ST.  
ROME, GA 30161  
PH: (706) 295.2700  
FX: (706) 295.2063

**NOT FOR CONSTRUCTION**

**PHILLIPS EDISON & CO**  
RIVERMONT STATION - UNIT 230  
8465 HOLCOMB BRIDGE ROAD  
JOHNS CREEK, GEORGIA 30022

**NOT FOR CONSTRUCTION**

LOD Unit 230

PROJECT # 1827  
DRAWN BY:  
L. A. (Tony) LOMBARD  
DATE: 2 JAN 2019  
REV. DATE:

**A1.1**