

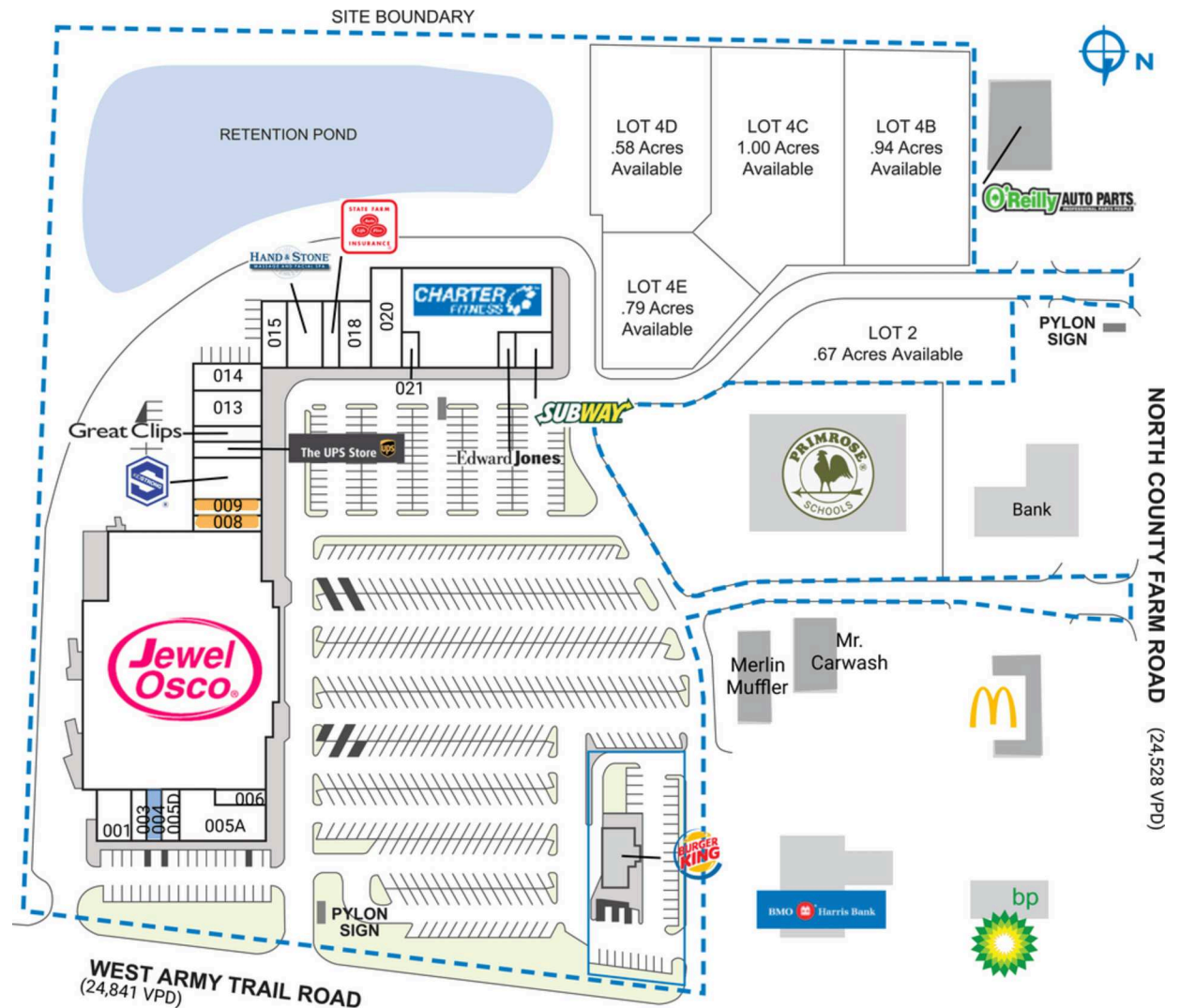
# HERITAGE PLAZA

750 West Army Trail Road | Carol Stream, IL 60188

SPACE	TENANT	SQ. FT.	
OUT1	Burger King		
SHAD1	Mr. Carwash		
SHAD2	Merlin Muffler		
SHAD3	O'Reilly Auto Parts		
SHAD4	McDonald's		
SHAD5	Primrose School		
001	Tracy's	2,360 SF	
003	Gosa Tea	1,200 SF	
004	COMING AVAILABLE	1,200 SF	
005A	Westside Children's Therapy	4,800 SF	
005D	Smokes Galore	1,200 SF	
006	Dini's Ice Cream	1,200 SF	
007	Jewel-Osco	64,922 SF	
008	AVAILABLE	1,600 SF	
009	AVAILABLE	1,600 SF	
010	Kidstrong	4,000 SF	
011	The UPS Store	1,600 SF	
012	Great Clips	1,600 SF	
013	Carol Stream Dental Associates	3,200 SF	
014	Sauer's Bakery	2,320 SF	
015	Chartreuse	2,332 SF	
016	Hand & Stone Massage and Facial Spa	3,200 SF	
017	State Farm Insurance	1,600 SF	
018	Central Dupage Physical Medicine	3,174 SF	
020	Taj Mahal Indian Restaurant	4,162 SF	
021	Top Line Nails	1,000 SF	
022	Charter Fitness	17,600 SF	
023	Edward Jones	1,000 SF	
024	Subway	2,000 SF	
TOTAL SQ. FT.		128,870	

## SITE LEGEND

<span style="background-color: orange; border: 1px solid black; display: inline-block; width: 15px; height: 10px;"></span> Available	<span style="background-color: lightblue; border: 1px solid black; display: inline-block; width: 15px; height: 10px;"></span> Occupied
<span style="background-color: lightblue; border: 1px solid black; display: inline-block; width: 15px; height: 10px;"></span> Leased (not occupied)	<span style="background-color: gray; border: 1px solid black; display: inline-block; width: 15px; height: 10px;"></span> Owned by Others
<span style="border: 2px dashed blue; display: inline-block; width: 15px; height: 10px;"></span> Site Boundary	



DISCLAIMER - This site plan is for general information purposes only and is not intended to constitute representations and warranties by Landlord as to the ownership of the real property depicted herein or the identity or nature of any occupants thereof.