



SIZE

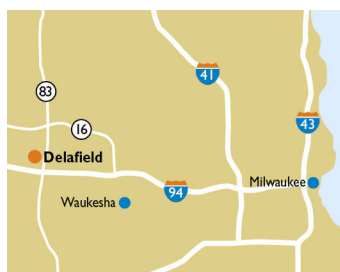
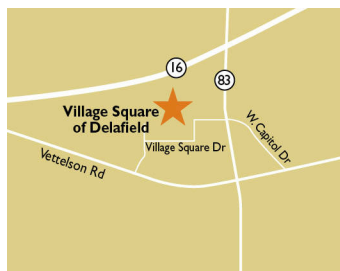
81,639 square feet

DEMOGRAPHICS

	1 mile	3 mile	5 mile
Population	2,625	20,992	49,375
Households	1,271	8,336	19,474
Median HH Income (\$)	61,156	108,599	116,977

MAJOR TENANT(S)

Pick 'n Save  
Great Clips



LOCATION

3161 Village Square Drive | Delafield, WI 53029

PROPERTY HIGHLIGHTS

- Anchored by Pick 'n Save
- Additional national tenants include Subway, Sola Salon Studios, and Great Clips
- Located in Delafield with a population exceeding 20,900 in a three-mile radius
- Situated near the intersection of Highway 83 (15,400 VPD) and Highway 16 (33,800 VPD)

LEASING CONTACT

Andy Schneider  
Mobile (513) 417-4369  
aschneider@phillipsedison.com

Kenneth Groh  
Mobile (513) 344-4606  
kgroh@phillipsedison.com

MORE INFO

www.phillipsedison.com



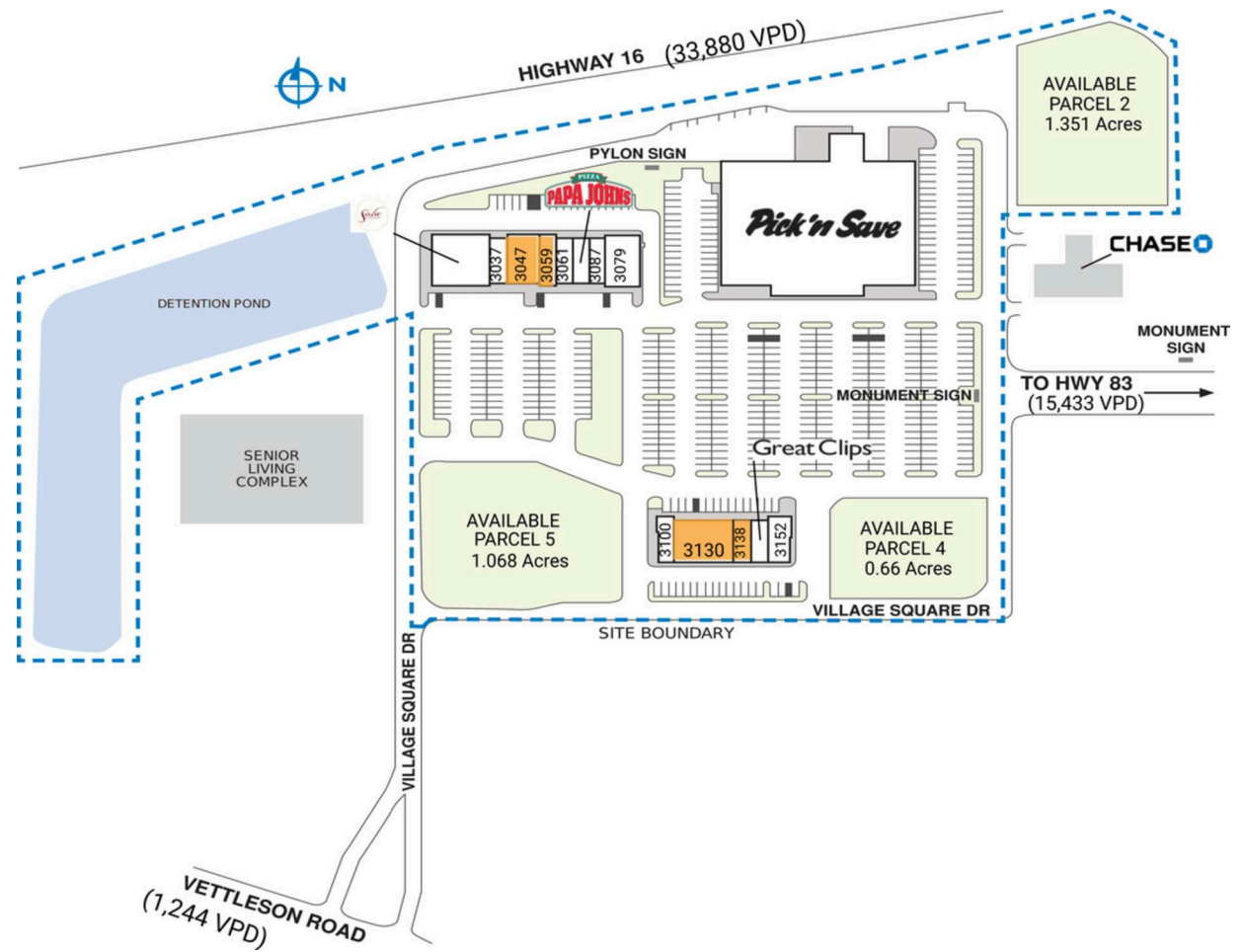
# VILLAGE SQUARE OF DELAFIELD

3161 Village Square Drive | Delafield, WI 53029

SPACE	TENANT	SQ. FT.
Shad1	Chase Bank	
Shad2	Heritage Lake Country	
3001	Sola Salons	5,314 SF
3037	Brooke Rose Massage Therapy	1,272 SF
3047	AVAILABLE	2,683 SF
3059	AVAILABLE	1,520 SF
3061	Asian Kitchen	1,272 SF
3067	Papa John's	1,225 SF
3079	Cloud 9 Dental	3,000 SF
3087	Choice Dry Cleaners	1,095 SF
3100	E Nails	1,245 SF
3130	AVAILABLE	4,630 SF
3138	AVAILABLE	1,155 SF
3146	Great Clips	961 SF
3152	Inclusion Coffee Company	1,829 SF
3161	Pick 'n Save	54,438 SF
<b>TOTAL SQ. FT.</b>		<b>81,639</b>

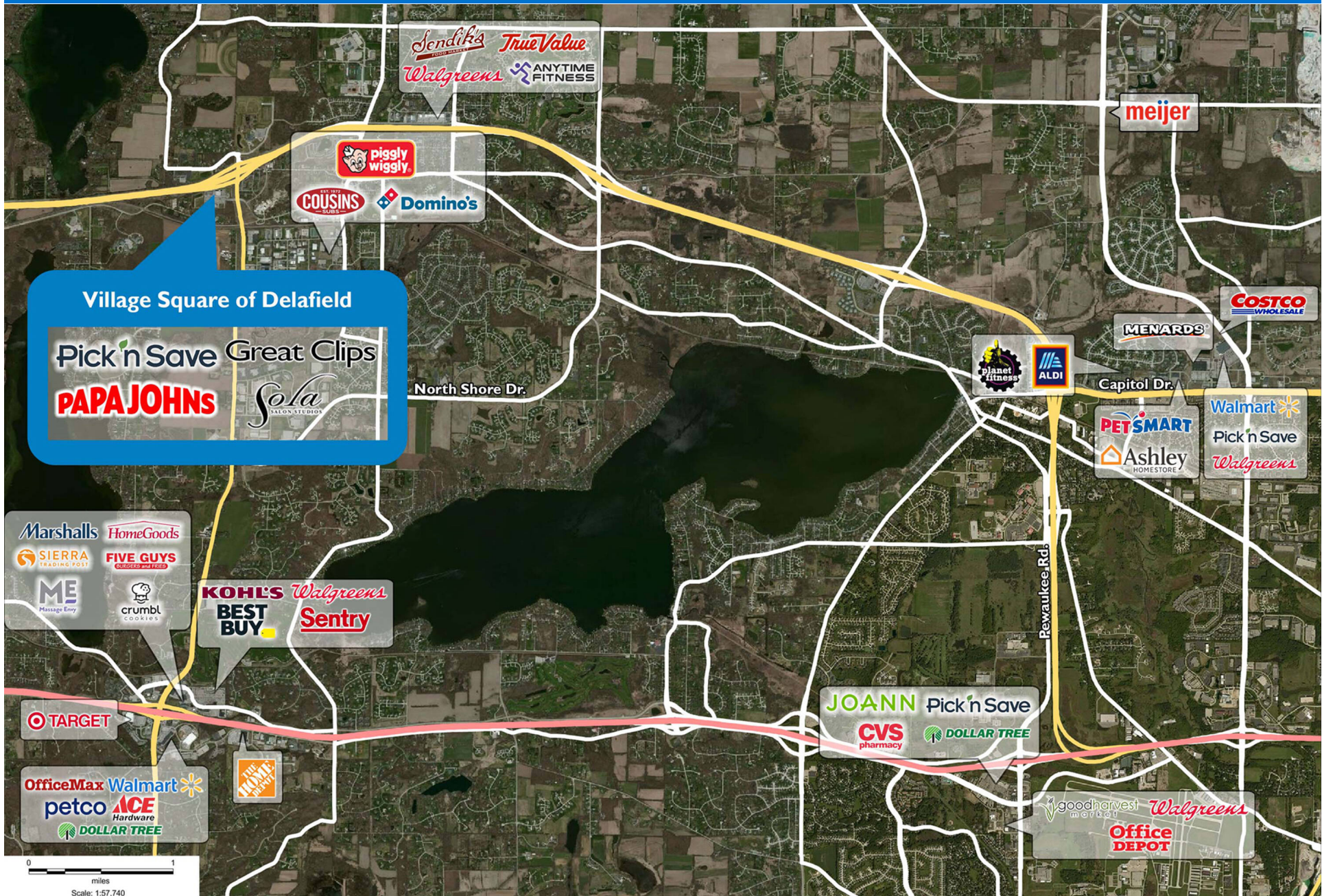
SITE LEGEND	
<span style="display: inline-block; width: 15px; height: 15px; background-color: #f4a460; border: 1px solid black;"></span> Available	<span style="display: inline-block; width: 15px; height: 15px; background-color: #d3d3d3; border: 1px solid black;"></span> Occupied
<span style="display: inline-block; width: 15px; height: 15px; background-color: #add8e6; border: 1px dashed black;"></span> Leased (not occupied)	<span style="display: inline-block; width: 15px; height: 15px; background-color: #cccccc; border: 1px solid black;"></span> Owned by Others
<span style="display: inline-block; width: 15px; height: 15px; border: 2px dashed blue;"></span> Site Boundary	



DISCLAIMER - This site plan is for general information purposes only and is not intended to constitute representations and warranties by Landlord as to the ownership of the real property depicted herein or the identity or nature of any occupants thereof.

# VILLAGE SQUARE OF DELAFIELD

3161 Village Square Drive | Delafield, WI 53029



# Demographic Summary Report

1990 - 2000 Census, 2023 Estimates & 2028 Projections

Calculated using TAS Retrieval Retrieval

Apr 17, 2024



Latitude: 43.103148

Longitude: -88.365312

Village Square of Delafield Delafield, WI		1.00 Mile Radius	3.00 Mile Radius	5.00 Mile Radius
Population	Q4 2023 Estimated Population	2,625	20,992	49,375
	2028 Projected Population	2,758	21,843	51,674
	2010 Census Population	2,546	20,214	46,931
	2000 Census Population	2,549	18,638	41,646
	1990 Census Population	2,437	15,059	33,932
	Historical Annual Growth 1990 to 2000	0.45%	2.15%	2.07%
	Historical Annual Growth 2000 to 2010	-0.01%	0.82%	1.20%
	Estimated Annual Growth 2010 to 2023	0.22%	0.27%	0.37%
	Projected Annual Growth 2023 to 2028	0.99%	0.80%	0.91%
	Median Age	40.8	45.1	47.0
Households	Q4 2023 Estimated Households	1,271	8,336	19,474
	2028 Projected Households	1,334	8,677	20,361
	2010 Census Households	1,179	7,627	17,569
	2000 Census Households	1,050	6,841	15,185
	1990 Census Households	900	5,222	11,755
	Historical Annual Growth 1990 to 2000	1.55%	2.74%	2.59%
	Historical Annual Growth 2000 to 2010	1.17%	1.09%	1.47%
	Estimated Annual Growth 2010 to 2023	0.55%	0.65%	0.75%
	Projected Annual Growth 2023 to 2028	0.97%	0.80%	0.89%
	Population per Household	2.05	2.51	2.53
Population by Race	White	88.9%	90.7%	90.8%
	Black or African American	0.8%	0.4%	0.6%
	Asian & Pacific Islander	3.4%	2.3%	2.0%
	Other Races	4.2%	3.4%	3.2%
	Hispanic Population	2.6%	3.2%	3.3%
Income	Average Household Income	\$99,300	\$159,723	\$164,695
	Median Household Income	\$61,156	\$108,599	\$116,977
	Per Capita Income	\$48,272	\$63,494	\$65,175
Education (Age 25+)	Elementary	1.2%	0.6%	0.6%
	Some High School	3.9%	1.5%	1.2%
	High School Graduate	31.3%	18.0%	18.0%
	Some College	18.5%	17.6%	17.5%
	Associates Degree Only	7.8%	9.1%	9.8%
	Bachelors Degree Only	22.7%	34.7%	34.0%
	Graduate Degree	14.6%	18.4%	18.8%
Business	Number of Businesses	131	661	1,415
	Total Number of Employees	1,583	7,540	16,556
	Employees per Business	12.11	11.41	11.70
	Residential Population per Business	20.09	31.77	34.90

This report was produced using data from private and government sources deemed to be reliable and is herein provided without representation or warranty.