



SIZE

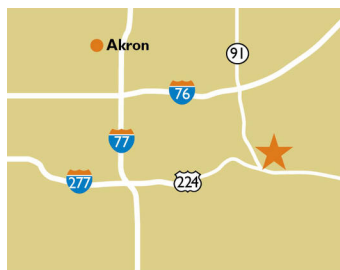
75,866 square feet

DEMOGRAPHICS

	1 mile	3 mile	5 mile
Population	6,985	43,179	124,255
Households	2,958	18,011	50,594
Median HH Income (\$)	51,275	56,244	53,663

MAJOR TENANT(S)

Giant Eagle
Pet Supplies Plus



LOCATION

2801 E. Waterloo Road | Akron, OH 44312

PROPERTY HIGHLIGHTS

- Anchored by Giant Eagle with Pet Supplies Plus, Papa John's Pizza, Subway and Supercuts
- Located in Akron, a suburb 39 miles south of downtown Cleveland, with a population exceeding 42,700 in a three-mile radius
- The center is located at the high-traffic intersection of Akron-Canton Road and Waterloo Road, which benefits from over 34,200 vehicles per day
- Akron is home to several colleges and universities including the University of Akron and Kent State University

LEASING CONTACT

Scott Faloni
Mobile (410) 693-3248
sfaloni@phillipsedison.com



MORE INFO

www.phillipsedison.com



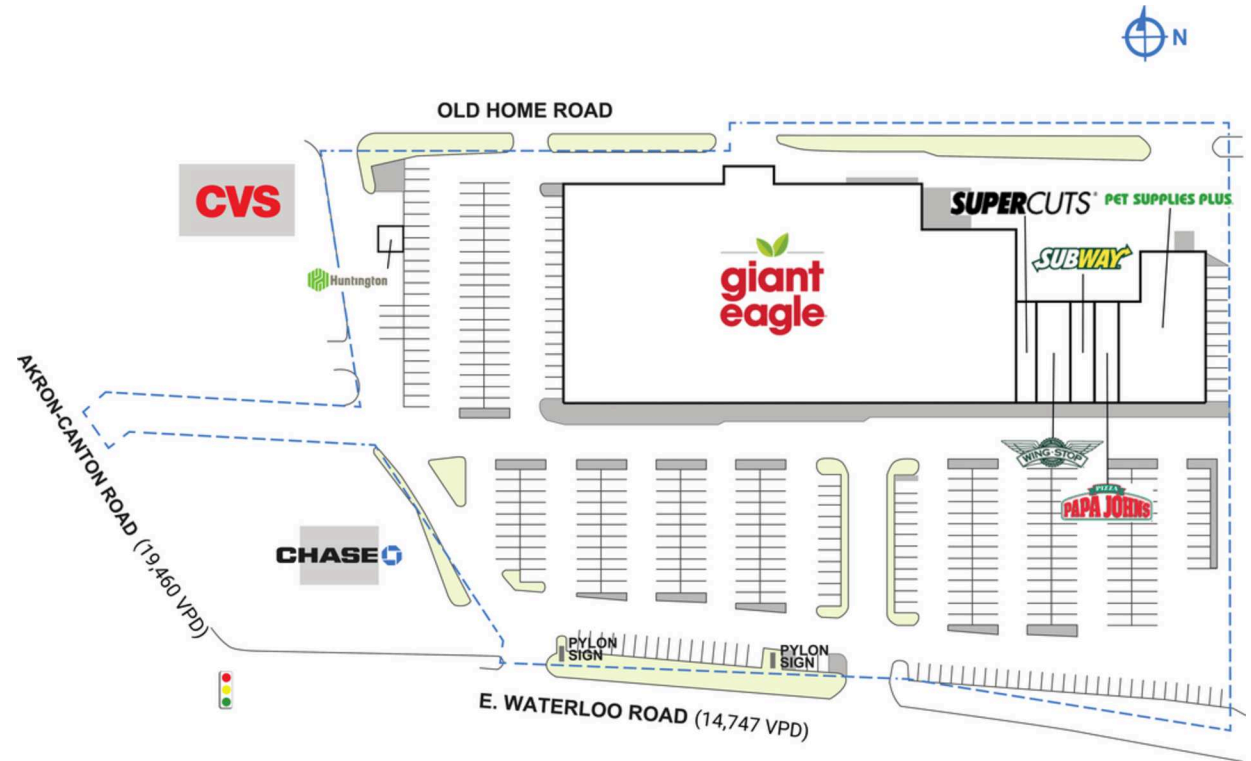
HARVEST PLAZA

2801 E. Waterloo Road | Akron, OH 44312

SPACE	TENANT	SQ. FT.
ATM	Huntington National Bank	
1	Giant Eagle	61,866 SF
2	Supercuts	1,200 SF
3	Wingstop	2,000 SF
4	Subway	1,600 SF
5	Papa John's Pizza	1,600 SF
6	Pet Supplies Plus	7,600 SF
TOTAL SQ. FT.		75,866

SITE LEGEND

 Available	 Occupied
 Leased (not occupied)	 Owned by Others
 Site Boundary	



DISCLAIMER - This site plan is for general information purposes only and is not intended to constitute representations and warranties by Landlord as to the ownership of the real property depicted herein or the identity or nature of any occupants thereof.

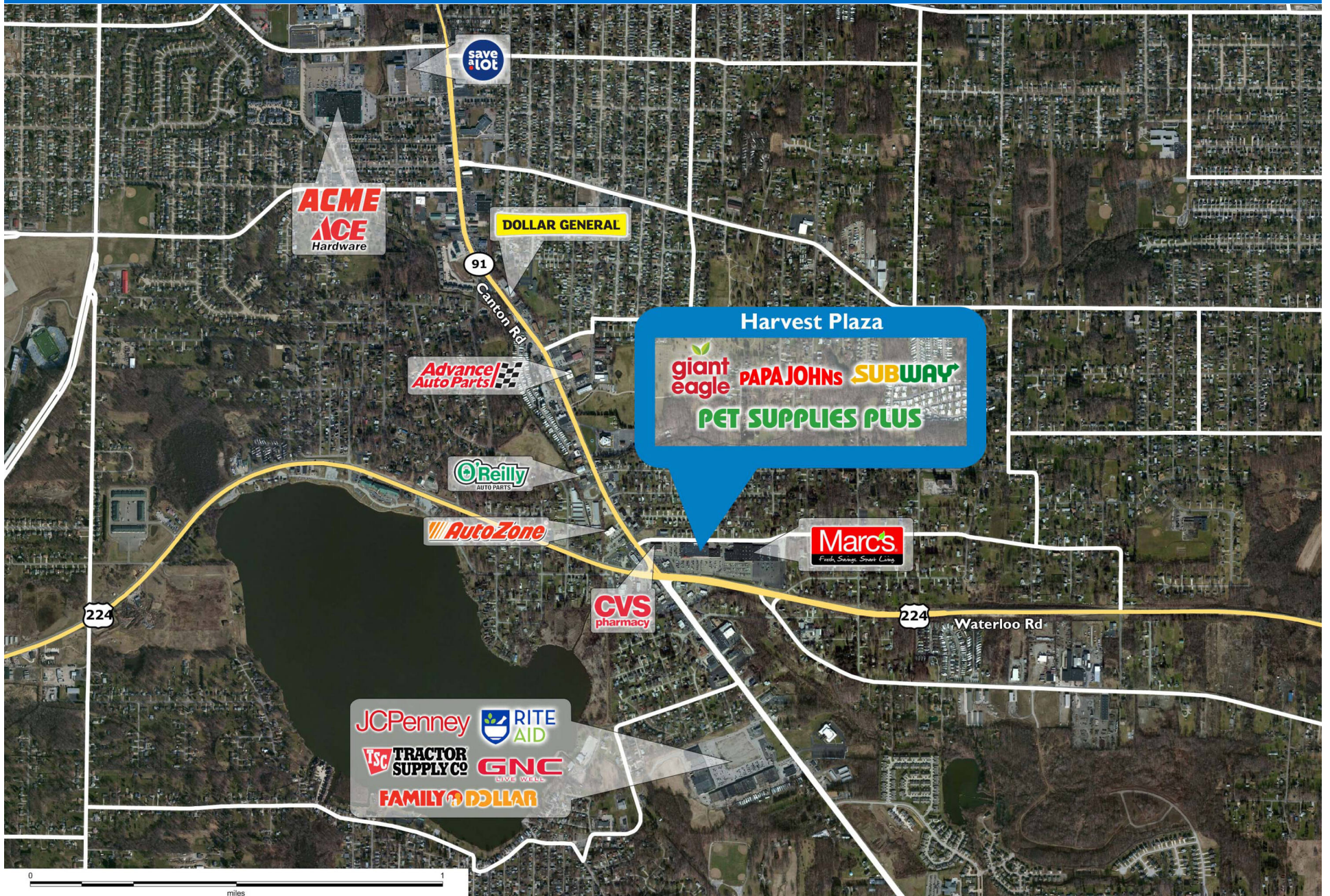
HARVEST PLAZA

2801 E. Waterloo Road | Akron, OH 44312



HARVEST PLAZA

2801 E. Waterloo Road | Akron, OH 44312



Demographic Summary Report

1990 - 2000 Census, 2022 Estimates & 2027 Projections

Calculated using TAS Retrieval Retrieval

Mar 20, 2023



Harvest Plaza Akron, OH		1.00 Mile Radius	3.00 Mile Radius	5.00 Mile Radius
Population	Q2 2022 Estimated Population	6,985	43,179	124,255
	2027 Projected Population	6,901	42,767	123,072
	2010 Census Population	7,188	43,793	125,817
	2000 Census Population	7,260	44,744	130,659
	1990 Census Population	7,253	44,212	128,649
	Historical Annual Growth 1990 to 2000	0.01%	0.12%	0.16%
	Historical Annual Growth 2000 to 2010	-0.10%	-0.21%	-0.38%
	Estimated Annual Growth 2010 to 2022	-0.23%	-0.11%	-0.10%
	Projected Annual Growth 2022 to 2027	-0.24%	-0.19%	-0.19%
	Median Age	44.5	42.8	40.2
Households	Q2 2022 Estimated Households	2,958	18,011	50,594
	2027 Projected Households	2,922	17,835	50,103
	2010 Census Households	3,049	18,269	51,205
	2000 Census Households	2,992	18,267	52,103
	1990 Census Households	2,926	17,525	49,840
	Historical Annual Growth 1990 to 2000	0.22%	0.42%	0.44%
	Historical Annual Growth 2000 to 2010	0.19%	0.00%	-0.17%
	Estimated Annual Growth 2010 to 2022	-0.24%	-0.11%	-0.09%
	Projected Annual Growth 2022 to 2027	-0.24%	-0.20%	-0.19%
	Population per Household	2.36	2.40	2.44
Population by Race	White	93.9%	92.1%	79.2%
	Black or African American	1.5%	2.9%	13.5%
	Asian & Pacific Islander	0.7%	0.8%	1.7%
	Other Races	2.6%	2.4%	3.7%
	Hispanic Population	1.4%	1.8%	1.9%
Income	Average Household Income	\$60,528	\$66,393	\$66,404
	Median Household Income	\$51,275	\$56,244	\$53,663
	Per Capita Income	\$25,674	\$27,721	\$27,163
Education (Age 25+)	Elementary	3.2%	2.8%	2.6%
	Some High School	9.2%	7.7%	7.3%
	High School Graduate	41.7%	40.6%	37.2%
	Some College	19.5%	22.2%	23.4%
	Associates Degree Only	12.6%	9.0%	8.8%
	Bachelors Degree Only	10.5%	12.2%	14.5%
	Graduate Degree	3.3%	5.5%	6.2%
Business	Number of Businesses	166	917	2,450
	Total Number of Employees	2,500	14,629	39,712
	Employees per Business	15.05	15.95	16.21
	Residential Population per Business	42.05	47.07	50.72

This report was produced using data from private and government sources deemed to be reliable and is herein provided without representation or warranty.