

ORMOND BEACH MALL

ORMOND BEACH, FL



SIZE

101,854 square feet

DEMOGRAPHICS

	1 mile	3 mile	5 mile
Population	5,021	21,239	52,781
Households	2,526	9,963	24,951
Median HH Income (\$)	54,892	62,179	56,211

MAJOR TENANT(S)

Publix
Bealls Outlet
Dollar Tree

LEASING CONTACT

Rich Dawson
Mobile (404) 433-9899
rdawson@phillipsedison.com

MORE INFO

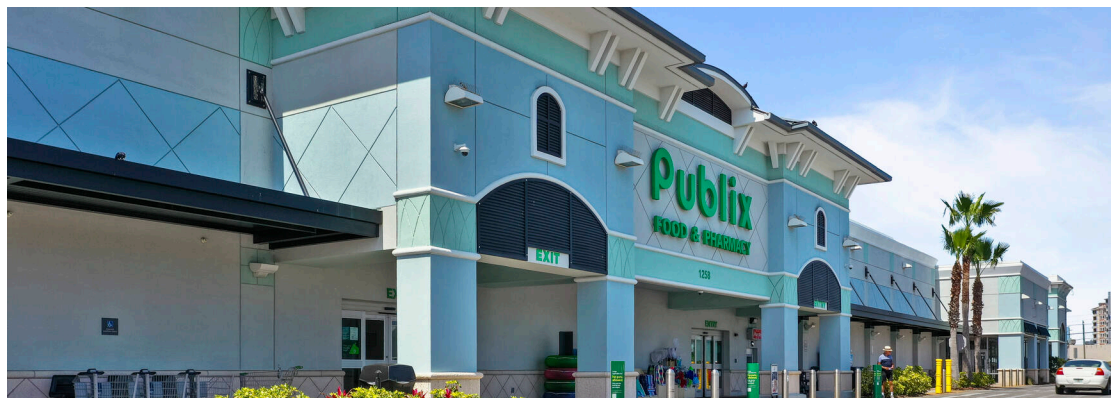
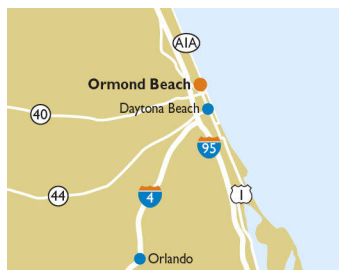
www.phillipsedison.com

LOCATION

1278 Ocean Shore Boulevard | Ormond Beach, FL 32176

PROPERTY HIGHLIGHTS

- Anchored by Publix with Bealls Outlet and Dollar Tree
- 9.5 million tourists visit Volusia County each year
- Located in Ormond Beach with a population greater than 20,400 in a three-mile radius with an average household income exceeding \$118,000
- Situated at the intersection of Lyndhurst Drive and Ocean Shore Boulevard (17,975 VPD)
- New Jimmy Buffet Latitude being built across the street



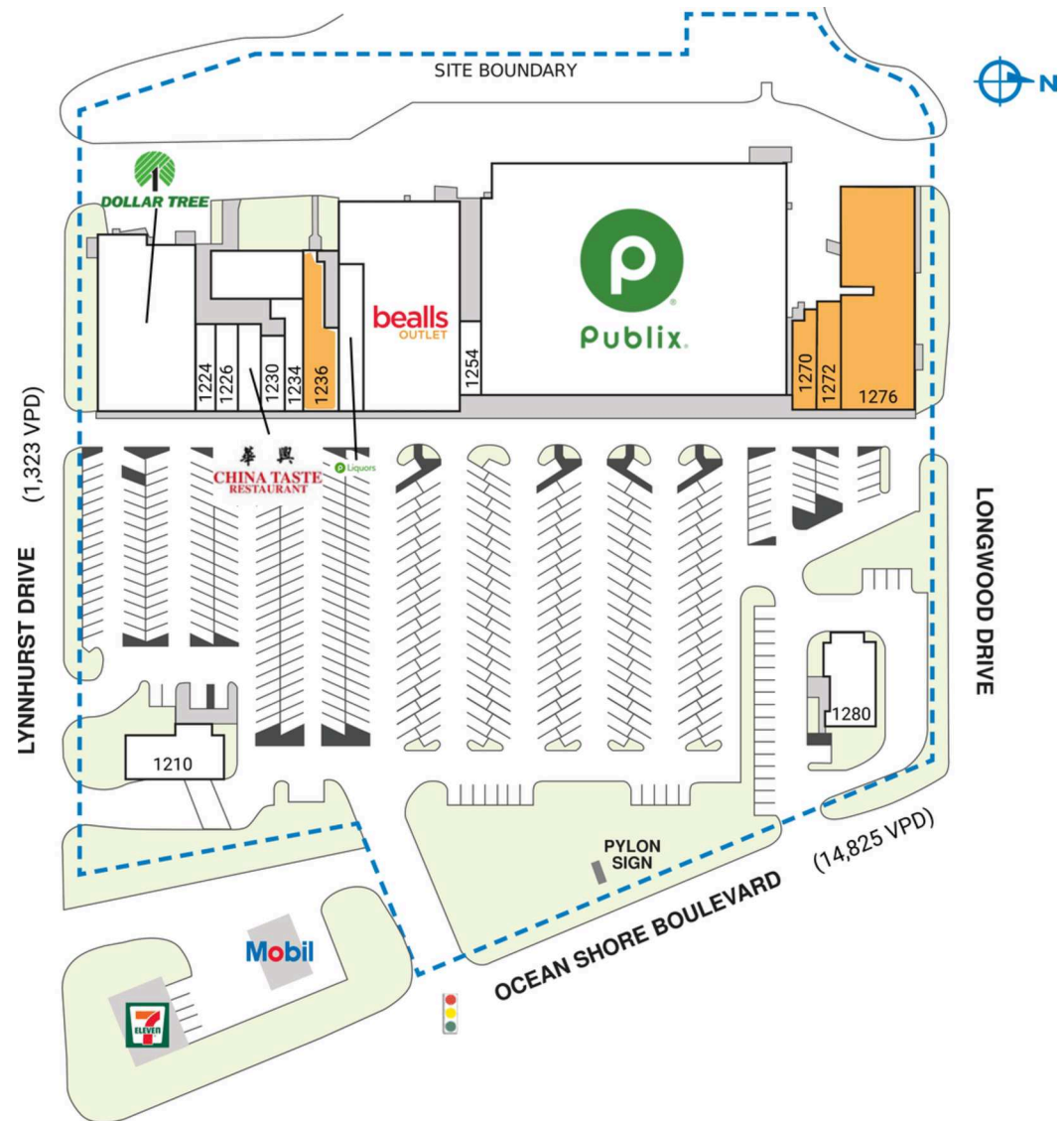
PHILLIPS EDISON & COMPANY®

ORMOND BEACH MALL

1278 Ocean Shore Boulevard | Ormond Beach, FL 32176

SPACE	TENANT	SQ. FT.
1210	Happy Coffee	2,977 SF
1222	Dollar Tree	10,000 SF
1224	Blue Wave Vape and Tobacco	900 SF
1226	Salty Dogs DIY Dog Wash	1,080 SF
1228	China Taste	1,200 SF
1230	Happy Nails & Tanning	1,000 SF
1234	Universal Supplies	1,780 SF
1236	AVAILABLE	2,632 SF
1242	Publix Liquors	2,100 SF
1250	Bealls Outlet	13,800 SF
1254	Bruno's Pizza	900 SF
1258	Publix	47,380 SF
1270	AVAILABLE	1,299 SF
1272	AVAILABLE	1,532 SF
1276	AVAILABLE	10,174 SF
1280	Sunrise Grill	3,100 SF
TOTAL SQ. FT.		101,854

SITE LEGEND	
 Available	 Occupied
 Leased (not occupied)	 Owned by Others
 Site Boundary	



DISCLAIMER - This site plan is for general information purposes only and is not intended to constitute representations and warranties by Landlord as to the ownership of the real property depicted herein or the identity or nature of any occupants thereof.

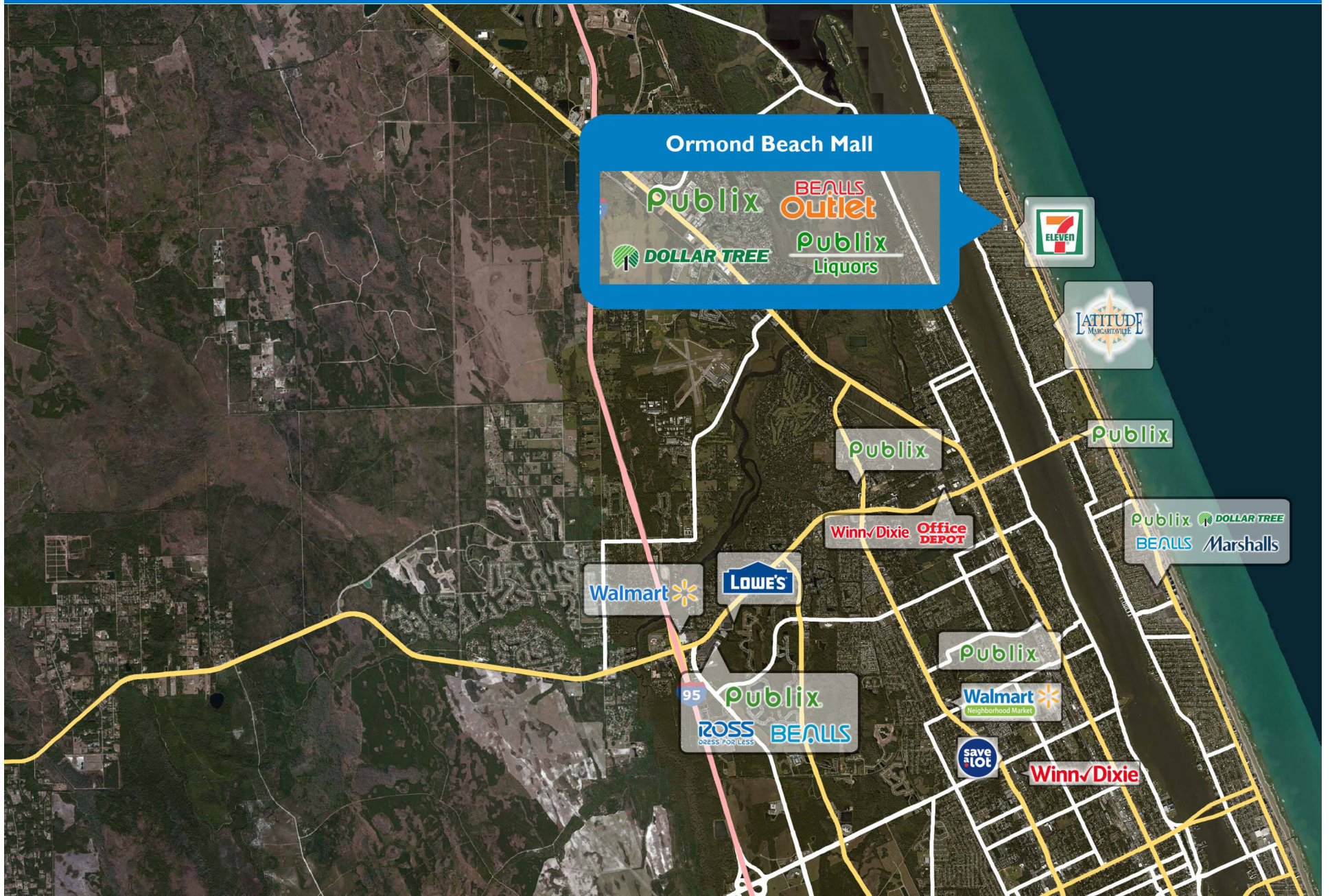
ORMOND BEACH MALL

1278 Ocean Shore Boulevard | Ormond Beach, FL 32176



ORMOND BEACH MALL

1278 Ocean Shore Boulevard | Ormond Beach, FL 32176



Demographic Summary Report

1990 - 2000 Census, 2022 Estimates & 2027 Projections

Calculated using TAS Retrieval Retrieval

Mar 20, 2023



Ormond Beach Mall Ormond Beach, FL		1.00 Mile Radius	3.00 Mile Radius	5.00 Mile Radius
Population	Q2 2022 Estimated Population	5,021	21,239	52,781
	2027 Projected Population	4,920	21,120	53,201
	2010 Census Population	4,798	19,894	47,693
	2000 Census Population	5,505	21,249	48,058
	1990 Census Population	5,395	20,145	45,006
	Historical Annual Growth 1990 to 2000	0.20%	0.53%	0.66%
	Historical Annual Growth 2000 to 2010	-1.36%	-0.66%	-0.08%
	Estimated Annual Growth 2010 to 2022	0.36%	0.51%	0.80%
	Projected Annual Growth 2022 to 2027	-0.41%	-0.11%	0.16%
	Median Age	56.1	55.4	54.3
Households	Q2 2022 Estimated Households	2,526	9,963	24,951
	2027 Projected Households	2,472	9,894	25,137
	2010 Census Households	2,422	9,360	22,556
	2000 Census Households	2,713	9,738	22,135
	1990 Census Households	2,640	9,226	20,275
	Historical Annual Growth 1990 to 2000	0.27%	0.54%	0.88%
	Historical Annual Growth 2000 to 2010	-1.13%	-0.40%	0.19%
	Estimated Annual Growth 2010 to 2022	0.33%	0.49%	0.79%
	Projected Annual Growth 2022 to 2027	-0.43%	-0.14%	0.15%
	Population per Household	1.99	2.12	2.10
Population by Race	White	92.8%	89.2%	86.6%
	Black or African American	0.5%	3.5%	4.2%
	Asian & Pacific Islander	0.9%	1.2%	1.7%
	Other Races	2.4%	2.5%	2.6%
	Hispanic Population	3.3%	3.7%	4.8%
Income	Average Household Income	\$88,901	\$100,158	\$82,135
	Median Household Income	\$54,892	\$62,179	\$56,211
	Per Capita Income	\$44,735	\$47,120	\$39,030
Education (Age 25+)	Elementary	0.6%	1.9%	2.2%
	Some High School	3.5%	4.3%	5.6%
	High School Graduate	26.4%	26.1%	26.9%
	Some College	21.8%	22.5%	23.1%
	Associates Degree Only	12.5%	11.8%	12.0%
	Bachelors Degree Only	20.4%	21.0%	19.8%
	Graduate Degree	14.8%	12.5%	10.4%
Business	Number of Businesses	136	861	2,152
	Total Number of Employees	1,058	8,759	23,135
	Employees per Business	7.79	10.17	10.75
	Residential Population per Business	36.96	24.67	24.53

This report was produced using data from private and government sources deemed to be reliable and is herein provided without representation or warranty.