

# CHERRY HILL MARKETPLACE

WESTLAND, MI



## SIZE

120,568 square feet

## DEMOGRAPHICS

	1 mile	3 mile	5 mile
<b>Population</b>	17,218	126,868	284,923
<b>Households</b>	7,080	52,683	116,001
<b>Median HH Income (\$)</b>	63,938	55,902	62,328

## MAJOR TENANT(S)

Kroger  
Ace Hardware  
CVS



## LOCATION

200 Merriman Road | Westland, MI 48186

## PROPERTY HIGHLIGHTS

- Anchored by Kroger, the number one grocer in the Detroit area
- Additional tenants include H&R Block, Ace Hardware, Great Clips, Premier Pets and CVS
- Located in Westland, a suburb 16 miles west of Detroit, with a population exceeding 126,800 in a three-mile radius
- The center is located at the high traffic intersection of Merriman Road and Cherry Hill Road, which benefits from over 42,600 vehicles per day

## LEASING CONTACT

Scott Faloni  
Mobile (410) 693-3248  
sfaloni@phillipsedison.com

## MORE INFO

www.phillipsedison.com



PHILLIPS EDISON & COMPANY®

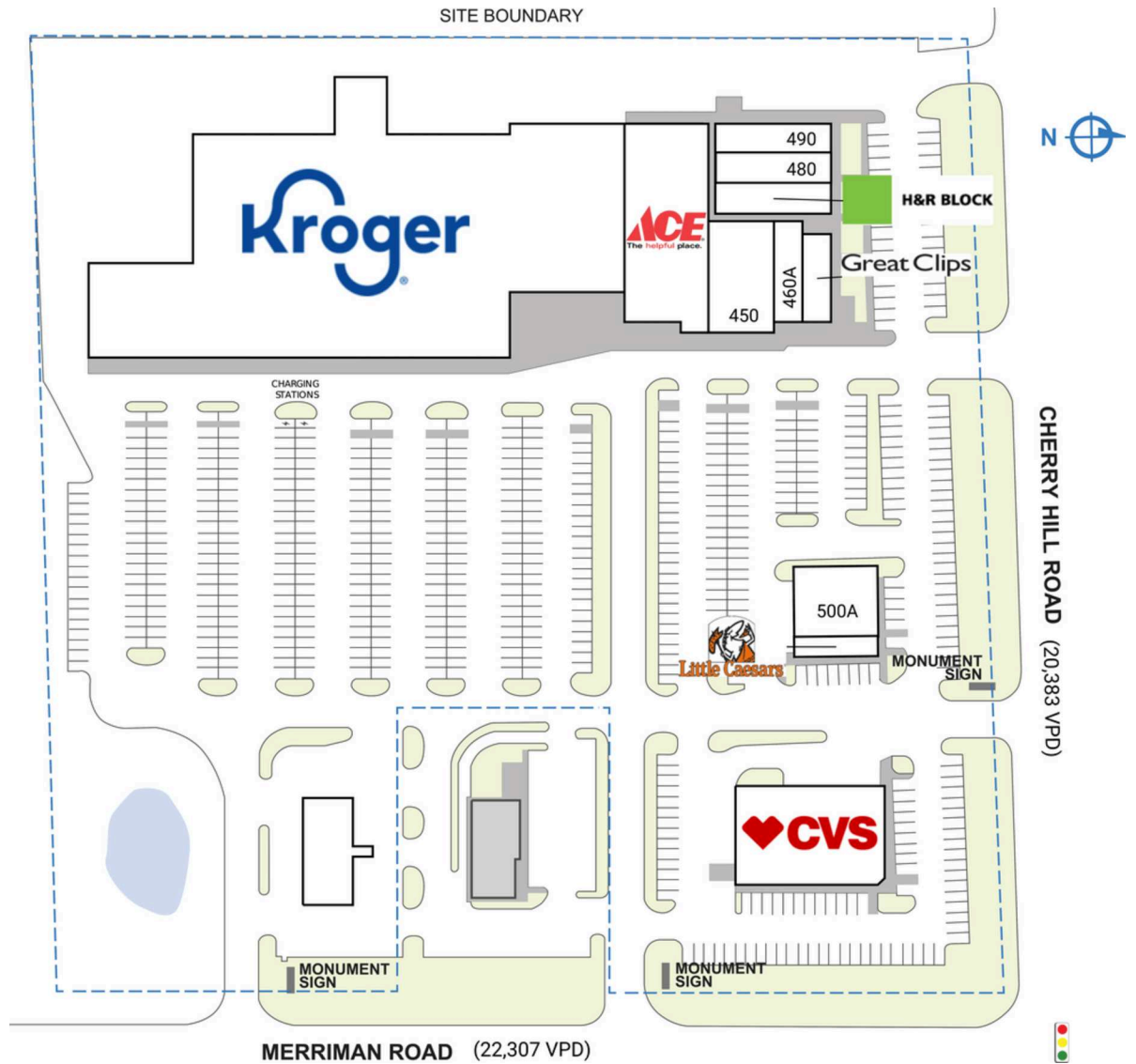
# CHERRY HILL MARKETPLACE

200 Merriman Road | Westland, MI 48186

SPACE	TENANT	SQ. FT.
200	Kroger	75,162 SF
400	Ace Hardware	12,119 SF
450	Premier Pet Supply	5,500 SF
460A	Bamboo Garden	2,125 SF
460B	Great Clips	2,125 SF
470	H&R Block	2,800 SF
480	Golden Nails	2,040 SF
490	Inflatable Moonwalk Rental and Party Supply	2,717 SF
500A	Prognify Urgent Care	3,500 SF
500B	Little Caesars	1,600 SF
600	CVS	10,880 SF
<b>TOTAL SQ. FT.</b>		<b>120,568</b>

SITE LEGEND	
<span style="display:inline-block; width:15px; height:15px; background-color:orange; border:1px solid black;"></span> Available	<span style="display:inline-block; width:15px; height:15px; background-color:lightgray; border:1px solid black;"></span> Occupied
<span style="display:inline-block; width:15px; height:15px; background-color:lightblue; border:1px solid black;"></span> Leased (not occupied)	<span style="display:inline-block; width:15px; height:15px; background-color:gray; border:1px solid black;"></span> Owned by Others
<span style="display:inline-block; width:15px; height:15px; border:2px dashed blue;"></span> Site Boundary	



DISCLAIMER - This site plan is for general information purposes only and is not intended to constitute representations and warranties by Landlord as to the ownership of the real property depicted herein or the identity or nature of any occupants thereof.

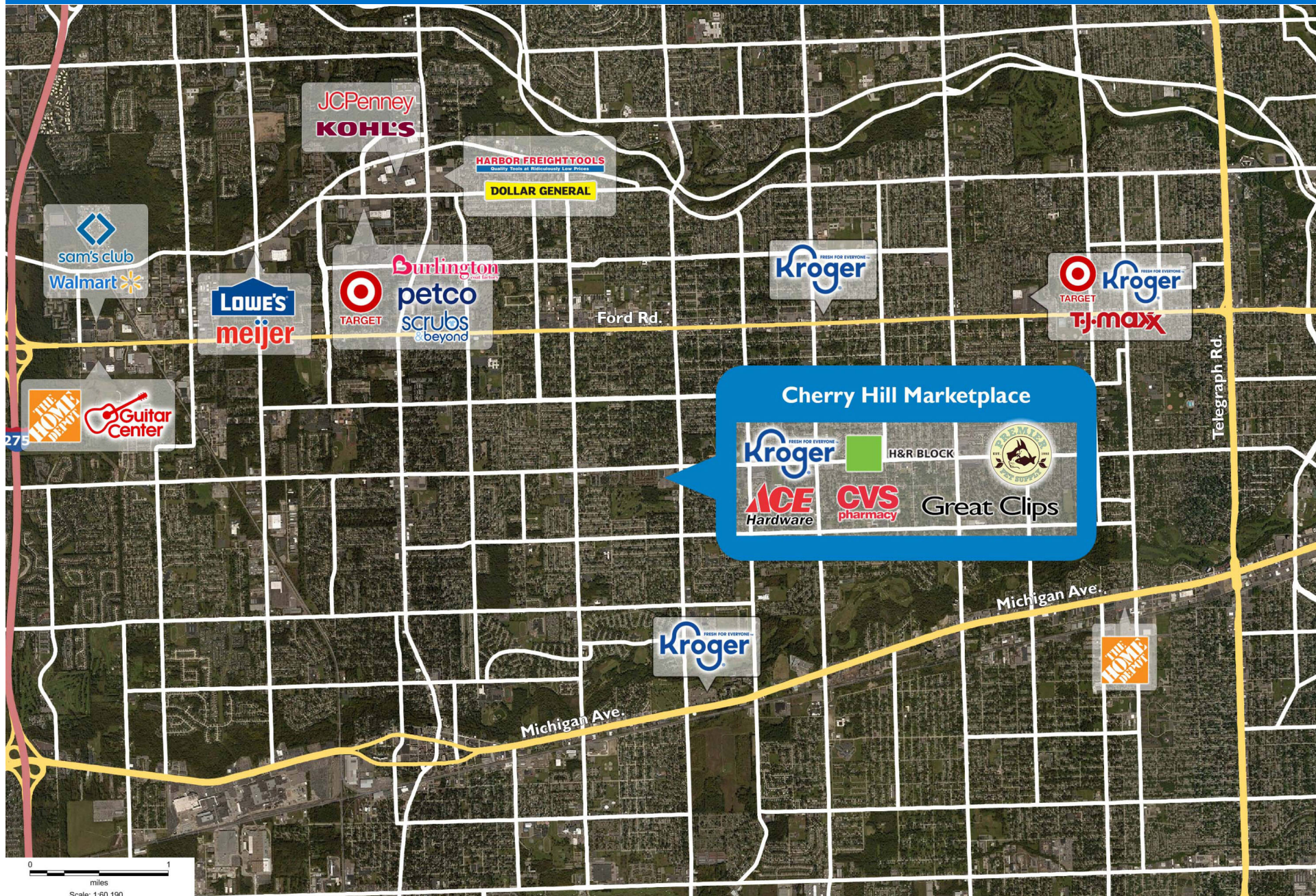
# CHERRY HILL MARKETPLACE

200 Merriman Road | Westland, MI 48186



# CHERRY HILL MARKETPLACE

200 Merriman Road | Westland, MI 48186



# Demographic Summary Report

1990 - 2000 Census, 2023 Estimates & 2028 Projections

Calculated using TAS Retrieval Retrieval

Apr 17, 2024



Latitude: 42.309343

Longitude: -83.352149

Cherry Hill Marketplace Westland, MI		1.00 Mile Radius	3.00 Mile Radius	5.00 Mile Radius
Population	Q4 2023 Estimated Population	17,218	126,868	284,923
	2028 Projected Population	16,985	125,249	282,494
	2010 Census Population	17,686	126,521	278,157
	2000 Census Population	18,987	136,467	289,040
	1990 Census Population	20,084	141,232	291,328
	Historical Annual Growth 1990 to 2000	-0.56%	-0.34%	-0.08%
	Historical Annual Growth 2000 to 2010	-0.71%	-0.75%	-0.38%
	Estimated Annual Growth 2010 to 2023	-0.19%	0.02%	0.17%
	Projected Annual Growth 2023 to 2028	-0.27%	-0.26%	-0.17%
	Median Age	40.3	39.4	39.3
Households	Q4 2023 Estimated Households	7,080	52,683	116,001
	2028 Projected Households	6,981	51,995	114,979
	2010 Census Households	6,942	51,184	112,522
	2000 Census Households	7,200	53,941	115,770
	1990 Census Households	6,905	52,178	110,442
	Historical Annual Growth 1990 to 2000	0.42%	0.33%	0.47%
	Historical Annual Growth 2000 to 2010	-0.36%	-0.52%	-0.28%
	Estimated Annual Growth 2010 to 2023	0.14%	0.21%	0.22%
	Projected Annual Growth 2023 to 2028	-0.28%	-0.26%	-0.18%
	Population per Household	2.40	2.39	2.44
Population by Race	White	69.1%	63.2%	66.2%
	Black or African American	18.7%	24.9%	21.1%
	Asian & Pacific Islander	1.3%	1.8%	3.1%
	Other Races	5.5%	5.8%	5.3%
	Hispanic Population	5.4%	4.4%	4.3%
Income	Average Household Income	\$75,278	\$70,355	\$78,117
	Median Household Income	\$63,938	\$55,902	\$62,328
	Per Capita Income	\$31,276	\$29,431	\$32,000
Education (Age 25+)	Elementary	2.2%	2.9%	2.8%
	Some High School	8.3%	8.3%	6.9%
	High School Graduate	33.7%	35.1%	31.1%
	Some College	27.4%	26.7%	24.6%
	Associates Degree Only	10.8%	9.1%	9.8%
	Bachelors Degree Only	11.5%	11.9%	16.0%
	Graduate Degree	6.2%	6.0%	8.9%
Business	Number of Businesses	172	2,161	5,313
	Total Number of Employees	1,264	22,834	68,668
	Employees per Business	7.33	10.57	12.92
	Residential Population per Business	99.89	58.70	53.63

This report was produced using data from private and government sources deemed to be reliable and is herein provided without representation or warranty.