



## SIZE

126,384 square feet

## DEMOGRAPHICS

	1 mile	3 mile	5 mile
<b>Population</b>	4,926	26,445	95,635
<b>Households</b>	2,052	9,487	33,857
<b>Median HH Income (\$)</b>	125,707	151,254	151,304

## MAJOR TENANT(S)

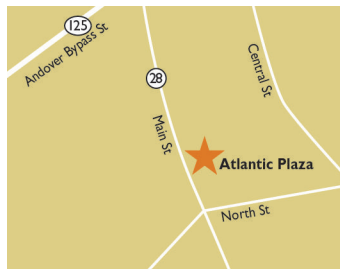
Stop & Shop  
 Pet Supplies Plus  
 OrangeTheory Fitness  
 Massage Envy  
 Starbucks

## LEASING CONTACT

**Marissa Visconsi**  
 Mobile (303) 547-4386  
 mvisconsi@phillipsedison.com

## MORE INFO

[www.phillipsedison.com](http://www.phillipsedison.com)



## LOCATION

271 North Main Street | North Reading, MA 01864

## PROPERTY HIGHLIGHTS

- Anchored by Stop & Shop
- Other national tenants include OrangeTheory Fitness, Starbucks and Pet Supplies Plus
- Located at the intersection of North Street and North Main Street with more than 20,600 vehicles per day
- Population exceeds 26,400 in a three-mile radius with an average household income greater than \$202,600

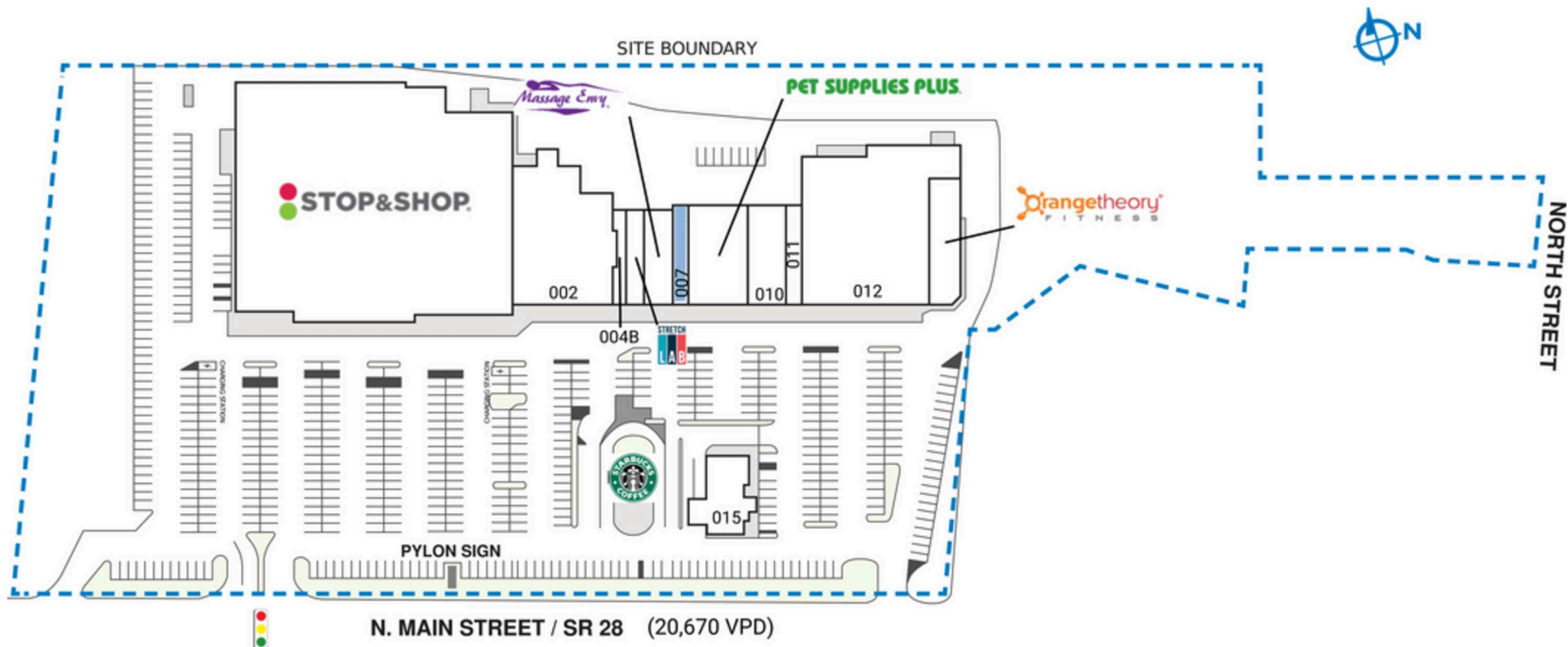


# ATLANTIC PLAZA

271 North Main Street | North Reading, MA 01864

SPACE	TENANT	SQ. FT.			
001	Stop & Shop	64,492 SF	006	Massage Envy	2,981 SF
002	One Stop Liquors	13,595 SF	007	<b>COMING AVAILABLE</b>	<b>1,650 SF</b>
004B	Threading & Body Wax Center	1,000 SF	008	Pet Supplies Plus	5,594 SF
005	Stretch Lab	1,515 SF	010	Ginger Gourmet	4,020 SF
			011	Luxor Nails and Spa.	1,566 SF
			012	Cowabungas	22,147 SF
			12A	OrangeTheory Fitness	3,000 SF
			014	Starbucks	1,624 SF
			015	Winter Hill Bank	3,200 SF
			<b>TOTAL SQ. FT.</b>		<b>126,384</b>

SITE LEGEND	
<span style="display:inline-block; width:15px; height:15px; background-color:orange; border:1px solid black;"></span>	Available
<span style="display:inline-block; width:15px; height:15px; background-color:lightgray; border:1px solid black;"></span>	Occupied
<span style="display:inline-block; width:15px; height:15px; background-color:lightblue; border:1px solid black;"></span>	Leased (not occupied)
<span style="display:inline-block; width:15px; height:15px; background-color:lightgray; border:1px solid black;"></span>	Owned by Others
<span style="display:inline-block; width:15px; height:15px; border:2px dashed blue;"></span>	Site Boundary

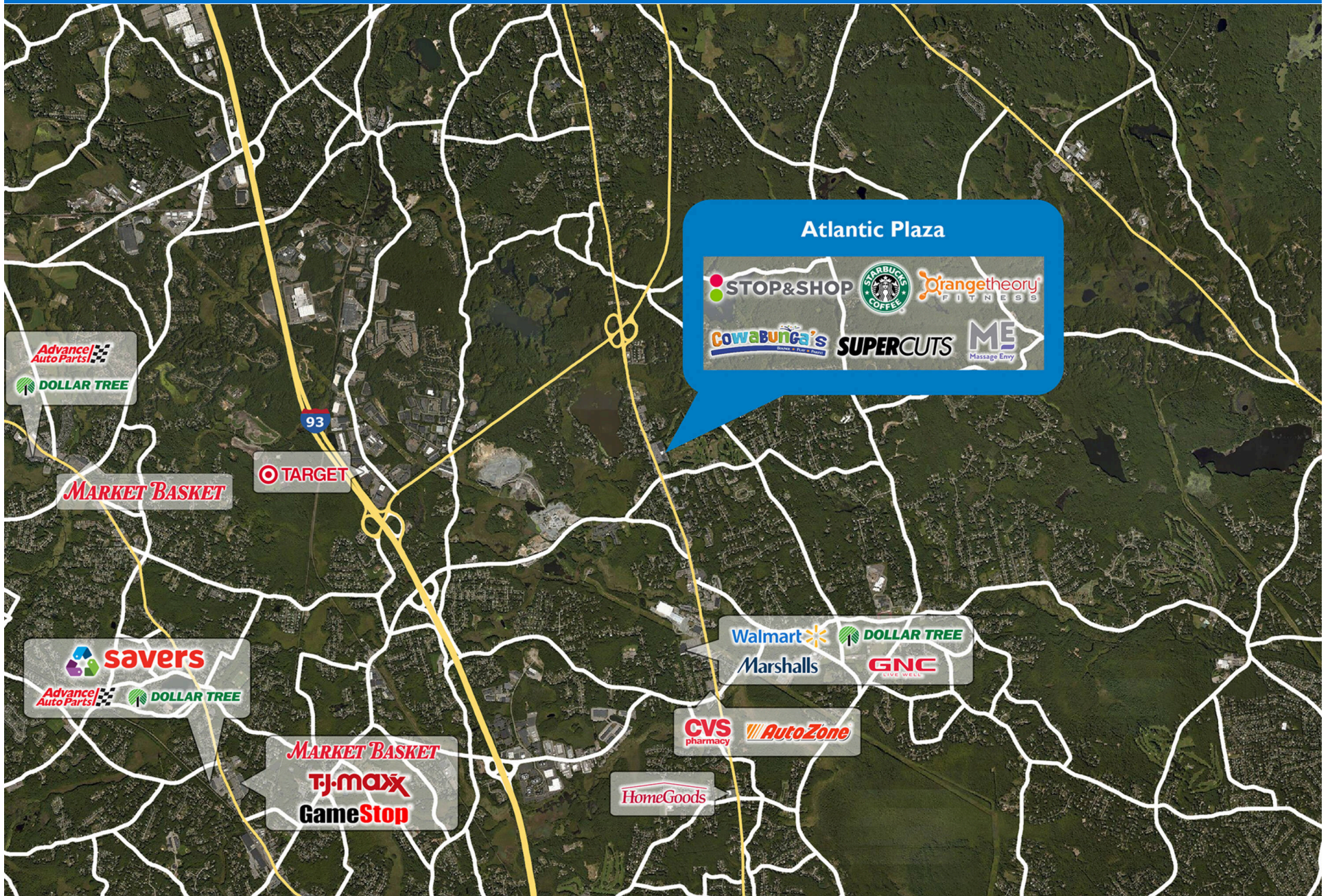


DISCLAIMER - This site plan is for general information purposes only and is not intended to constitute representations and warranties by Landlord as to the ownership of the real property depicted herein or the identity or nature of any occupants thereof.



# ATLANTIC PLAZA

271 North Main Street | North Reading, MA 01864





# Demographic Summary Report

1990 - 2000 Census, 2023 Estimates & 2028 Projections

Calculated using TAS Retrieval Retrieval

Apr 17, 2024



Latitude: 42.591963

Longitude: -71.116281

Atlantic Plaza North Reading, MA		1.00 Mile Radius	3.00 Mile Radius	5.00 Mile Radius
Population	Q4 2023 Estimated Population	4,926	26,445	95,635
	2028 Projected Population	4,981	26,582	95,930
	2010 Census Population	4,717	25,239	91,084
	2000 Census Population	4,243	24,089	86,606
	1990 Census Population	3,916	21,017	79,074
	Historical Annual Growth 1990 to 2000	0.80%	1.37%	0.91%
	Historical Annual Growth 2000 to 2010	1.07%	0.47%	0.51%
	Estimated Annual Growth 2010 to 2023	0.32%	0.34%	0.36%
	Projected Annual Growth 2023 to 2028	0.22%	0.10%	0.06%
	Median Age	44.6	44.6	44.3
Households	Q4 2023 Estimated Households	2,052	9,487	33,857
	2028 Projected Households	2,076	9,544	33,975
	2010 Census Households	1,923	9,012	32,186
	2000 Census Households	1,571	8,337	29,999
	1990 Census Households	1,389	6,981	26,573
	Historical Annual Growth 1990 to 2000	1.24%	1.79%	1.22%
	Historical Annual Growth 2000 to 2010	2.05%	0.78%	0.71%
	Estimated Annual Growth 2010 to 2023	0.47%	0.37%	0.37%
	Projected Annual Growth 2023 to 2028	0.24%	0.12%	0.07%
	Population per Household	2.37	2.75	2.76
Population by Race	White	85.1%	84.2%	84.5%
	Black or African American	1.9%	1.3%	1.3%
	Asian & Pacific Islander	6.0%	6.8%	6.9%
	Other Races	4.7%	4.5%	3.6%
	Hispanic Population	2.3%	3.1%	3.7%
Income	Average Household Income	\$161,056	\$202,693	\$192,509
	Median Household Income	\$125,707	\$151,254	\$151,304
	Per Capita Income	\$67,995	\$73,507	\$69,280
Education (Age 25+)	Elementary	2.2%	1.3%	1.7%
	Some High School	2.0%	1.4%	2.1%
	High School Graduate	18.0%	17.3%	18.2%
	Some College	15.5%	13.2%	12.7%
	Associates Degree Only	7.1%	6.1%	7.0%
	Bachelors Degree Only	34.7%	33.9%	32.1%
	Graduate Degree	20.5%	26.7%	26.2%
Business	Number of Businesses	192	1,013	3,407
	Total Number of Employees	1,741	12,909	45,325
	Employees per Business	9.07	12.74	13.30
	Residential Population per Business	25.67	26.10	28.07

This report was produced using data from private and government sources deemed to be reliable and is herein provided without representation or warranty.