



SIZE

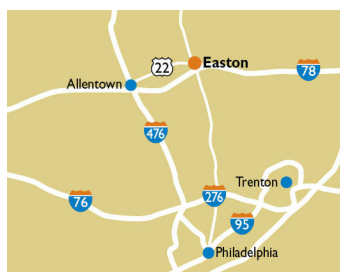
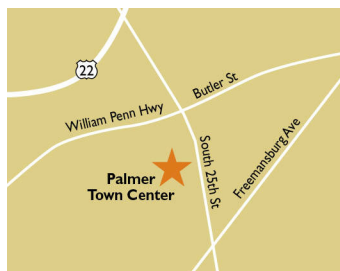
153,020 square feet

DEMOGRAPHICS

1 mile	3 mile	5 mile
Population		
13,979	72,532	139,341
Households		
5,658	27,570	53,232
Median HH Income (\$)		
82,191	79,257	86,068

MAJOR TENANT(S)

Giant
Marshalls
Home Depot



LOCATION

721 South 25th Street | Easton, PA 18045

PROPERTY HIGHLIGHTS

- Anchored by Giant Food Stores
- Key tenants include Marshalls, Verizon, and Aspen Dental
- Located at the intersection of William Penn Hwy and South 25th Street
- Population exceeding 139,30 in a five mile radius, with an average household income greater than \$110,000

LEASING CONTACT

Scott Faloni
Mobile (410) 693-3248
sfaloni@phillipsedison.com

MORE INFO

www.phillipsedison.com



PALMER TOWN CENTER

721 South 25th Street | Easton, PA 18045

SPACE	TENANT	SQ. FT.				
SHAD1	Home Depot		012 HoHo Wok Chinese Restaurant	1,368 SF	021 Aaron's	5,389 SF
001	Palmer Laundromat	1,997 SF	013 Good Shepherd Rehabilitation Hospital	3,284 SF	022 Five Below	8,054 SF
002	Twisted Escape	1,999 SF	015 B Positive Plasma	2,857 SF	025 Gel Nails Corp	1,668 SF
004	Dogtopia	5,940 SF	016 Philly Pretzel Factory	1,600 SF	026 Hi-Pot	2,300 SF
008	Dairy Queen	3,620 SF	017 Holiday Hair	1,350 SF	027 Jill's Hallmark	3,623 SF
009	Truist Bank	4,640 SF	018 Verizon	2,280 SF	028 Cancun Mexican Restaurant	3,508 SF
010	Aspen Dental	4,000 SF	019 Giant	65,264 SF	TOTAL SQ. FT.	153,020
011	Indian Spice & Sweets	1,839 SF	020 Marshalls	25,000 SF		
011B	GNC	1,440 SF				

SITE LEGEND

- Available
- Occupied
- Leased (not occupied)
- Owned by Others
- Site Boundary



DISCLAIMER - This site plan is for general information purposes only and is not intended to constitute representations and warranties by Landlord as to the ownership of the real property depicted herein or the identity or nature of any occupants thereof.

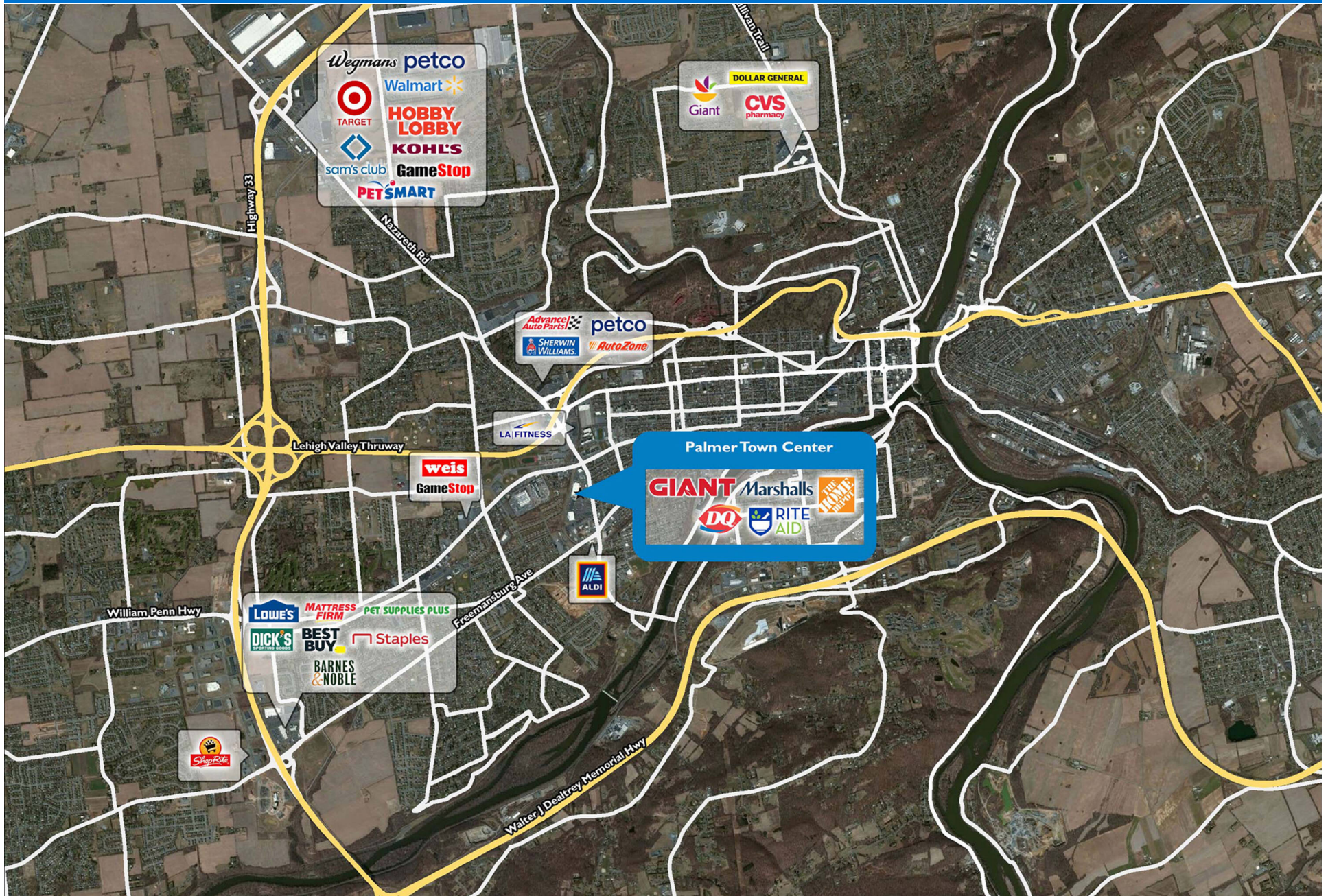
PALMER TOWN CENTER

721 South 25th Street | Easton, PA 18045



PALMER TOWN CENTER

721 South 25th Street | Easton, PA 18045



Demographic Summary Report

1990 - 2000 Census, 2023 Estimates & 2028 Projections

Calculated using TAS Retrieval Retrieval

Apr 17, 2024



Latitude: 40.676741

Longitude: -75.249622

Palmer Town Center Easton, PA		1.00 Mile Radius	3.00 Mile Radius	5.00 Mile Radius
Population	Q4 2023 Estimated Population	13,979	72,532	139,341
	2028 Projected Population	14,152	73,862	143,552
	2010 Census Population	12,805	66,827	126,850
	2000 Census Population	12,102	61,029	111,011
	1990 Census Population	11,389	57,905	101,912
	Historical Annual Growth 1990 to 2000	0.61%	0.53%	0.86%
	Historical Annual Growth 2000 to 2010	0.57%	0.91%	1.34%
	Estimated Annual Growth 2010 to 2023	0.64%	0.60%	0.69%
	Projected Annual Growth 2023 to 2028	0.25%	0.36%	0.60%
	Median Age	41.9	40.4	42.5
Households	Q4 2023 Estimated Households	5,658	27,570	53,232
	2028 Projected Households	5,731	28,088	54,857
	2010 Census Households	5,082	24,856	47,682
	2000 Census Households	4,990	23,334	42,019
	1990 Census Households	4,473	21,453	37,658
	Historical Annual Growth 1990 to 2000	1.10%	0.84%	1.10%
	Historical Annual Growth 2000 to 2010	0.18%	0.63%	1.27%
	Estimated Annual Growth 2010 to 2023	0.78%	0.76%	0.80%
	Projected Annual Growth 2023 to 2028	0.26%	0.37%	0.60%
	Population per Household	2.44	2.50	2.52
Population by Race	White	66.7%	64.1%	67.9%
	Black or African American	6.9%	9.5%	8.5%
	Asian & Pacific Islander	4.4%	3.6%	4.0%
	Other Races	5.0%	5.0%	4.5%
	Hispanic Population	17.0%	17.7%	15.0%
Income	Average Household Income	\$94,758	\$102,511	\$110,089
	Median Household Income	\$82,191	\$79,257	\$86,068
	Per Capita Income	\$38,773	\$39,780	\$42,790
Education (Age 25+)	Elementary	2.9%	3.1%	2.8%
	Some High School	6.9%	7.2%	5.5%
	High School Graduate	36.0%	34.4%	31.9%
	Some College	16.4%	15.1%	15.7%
	Associates Degree Only	11.1%	9.7%	9.8%
	Bachelors Degree Only	17.8%	18.6%	21.0%
	Graduate Degree	8.8%	11.9%	13.3%
Business	Number of Businesses	440	1,896	3,547
	Total Number of Employees	6,941	28,969	52,299
	Employees per Business	15.77	15.28	14.74
	Residential Population per Business	31.76	38.25	39.28

This report was produced using data from private and government sources deemed to be reliable and is herein provided without representation or warranty.