

# NORMANDALE VILLAGE

BLOOMINGTON, MN



## SIZE

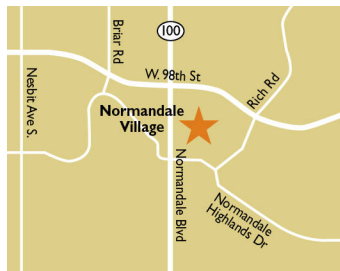
140,400 square feet

## DEMOGRAPHICS

	1 mile	3 mile	5 mile
<b>Population</b>	10,322	62,366	185,358
<b>Households</b>	4,410	26,918	77,710
<b>Median HH Income (\$)</b>	97,947	96,557	92,778

## MAJOR TENANT(S)

Lunds & Byerlys  
Ace Hardware  
Anytime Fitness



## LOCATION

5101 98th Street West | Bloomington, MN 55437

## PROPERTY HIGHLIGHTS

- Anchored by Lunds & Byerlys
- Located in Bloomington, a suburb 12 miles south of Minneapolis, with a population exceeding 62,300 in a three-mile radius and an average annual household income greater than \$122,400
- Bloomington is the home of Mall of America which has over 250 shops, 50 restaurants and receives more than 40 million visitors annually
- The center is located at the intersection of 98th Street and Normandale Boulevard, which benefits from over 22,000 vehicles per day

## LEASING CONTACT

**Andy Schneider**  
Mobile (513) 417-4369  
aschneider@phillipsedison.com

**Kenneth Groh**  
Mobile (513) 344-4606  
kgroh@phillipsedison.com

## MORE INFO

www.phillipsedison.com



**PHILLIPS EDISON & COMPANY®**

# NORMANDEALE VILLAGE

5101 98th Street West | Bloomington, MN 55437

SPACE	TENANT	SQ. FT.		
OUT2	Clear Wireless		5135	Ace Hardware 17,926 SF
OUT3	T-Mobile		5141	National Karate Academy of Martial Arts 2,816 SF
OUT4	Sprint		5143	Bloomington Wellness Center 5,785 SF
5102	NorthStar Tavern	5,420 SF	5145	<b>AVAILABLE 4,840 SF</b>
5107	Anytime Fitness	6,592 SF	5147	Snips Spa Salon of Bloomington 3,270 SF
5111	Mathnasium	1,215 SF	5147A	Kifaax Travel 1,570 SF
5113	Amazing Momo	1,624 SF	5149	US Bank 4,840 SF
5115	Great Clips	1,522 SF	5150	BP 1,857 SF
5117	NK Spa Nails	1,525 SF	5153	In Harmony Dental Care 3,952 SF
5117A	AT&T	500 SF	5154A	Verizon 360 SF
5119	Bullvino's Churrascaria	9,897 SF	5157B	Haskell's 6,237 SF
5123	Postal Dispatch	2,150 SF	5159	Lunds & Byerlys 38,335 SF
5125	Subway	1,324 SF	9801	Wells Fargo 4,410 SF
5127A	JT Shoe Repair	605 SF	9805	Carmine's Bar & Grille 4,900 SF
5129	The Dog Evolved	1,498 SF		<b>TOTAL SQ. FT. 140,400</b>
5131	Betty's Tailor	864 SF		
5133	Especially for Children	4,566 SF		

SITE LEGEND	
<span style="background-color: #FFD700; border: 1px solid black; display: inline-block; width: 15px; height: 10px;"></span> Available	<span style="background-color: #D3D3D3; border: 1px solid black; display: inline-block; width: 15px; height: 10px;"></span> Occupied
<span style="background-color: #ADD8E6; border: 1px solid black; display: inline-block; width: 15px; height: 10px;"></span> Leased (not occupied)	<span style="background-color: #808080; border: 1px solid black; display: inline-block; width: 15px; height: 10px;"></span> Owned by Others
<span style="border: 2px dashed blue; display: inline-block; width: 15px; height: 10px;"></span> Site Boundary	



DISCLAIMER - This site plan is for general information purposes only and is not intended to constitute representations and warranties by Landlord as to the ownership of the real property depicted herein or the identity or nature of any occupants thereof.

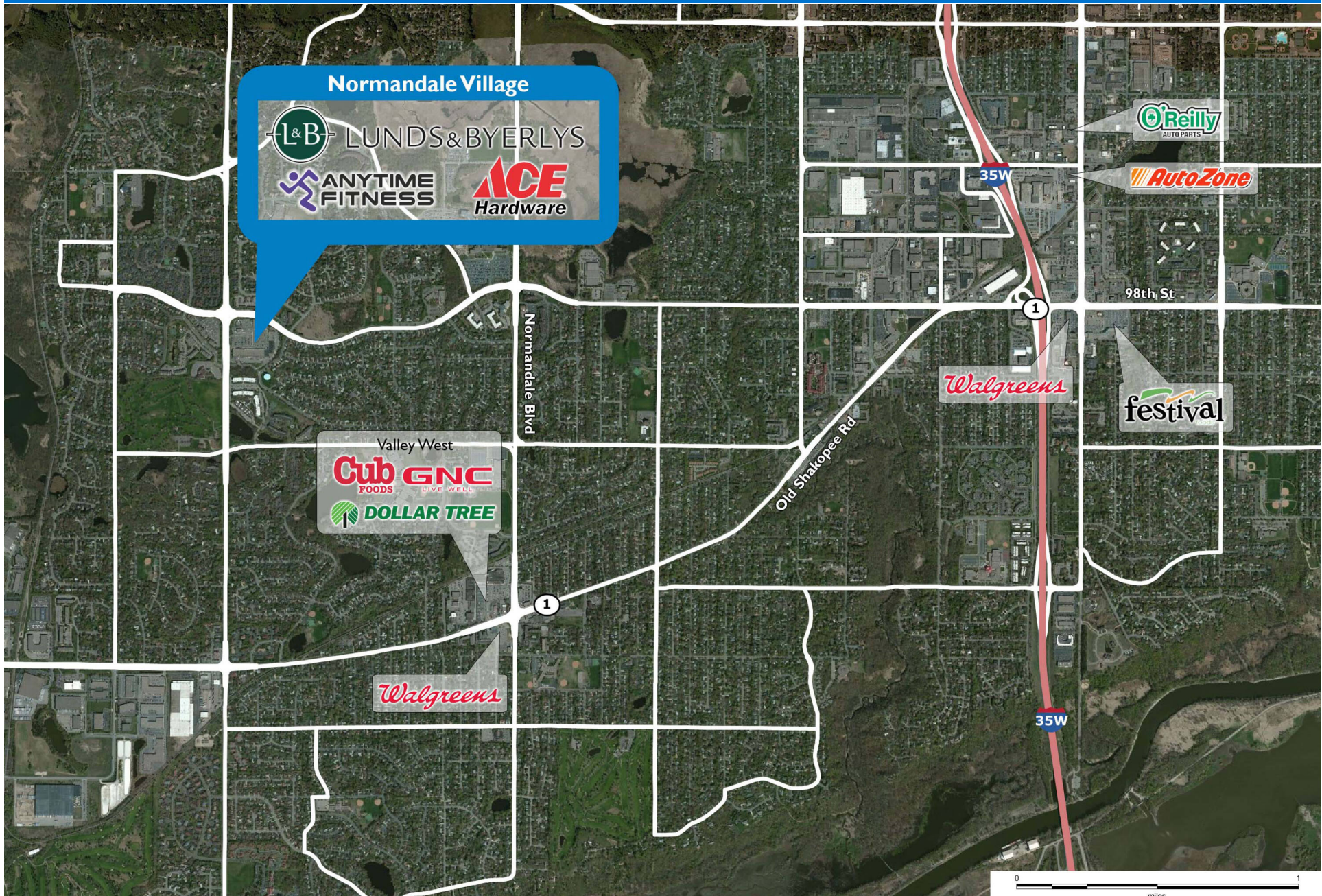
# NORMANDEALE VILLAGE

5101 98th Street West | Bloomington, MN 55437



# NORMANDALE VILLAGE

5101 98th Street West | Bloomington, MN 55437



# Demographic Summary Report

1990 - 2000 Census, 2023 Estimates & 2028 Projections

Calculated using TAS Retrieval Retrieval

Apr 17, 2024



Latitude: 44.823975

Longitude: -93.347133

Normandale Village Bloomington, MN		1.00 Mile Radius	3.00 Mile Radius	5.00 Mile Radius
Population	Q4 2023 Estimated Population	10,322	62,366	185,358
	2028 Projected Population	10,720	64,924	194,628
	2010 Census Population	9,605	57,589	168,566
	2000 Census Population	9,798	60,015	164,098
	1990 Census Population	10,285	60,469	157,330
	Historical Annual Growth 1990 to 2000	-0.48%	-0.08%	0.42%
	Historical Annual Growth 2000 to 2010	-0.20%	-0.41%	0.27%
	Estimated Annual Growth 2010 to 2023	0.53%	0.58%	0.69%
	Projected Annual Growth 2023 to 2028	0.76%	0.81%	0.98%
	Median Age	42.4	43.7	41.3
Households	Q4 2023 Estimated Households	4,410	26,918	77,710
	2028 Projected Households	4,582	28,053	81,804
	2010 Census Households	4,276	25,336	71,851
	2000 Census Households	4,283	25,555	69,785
	1990 Census Households	4,107	23,941	63,980
	Historical Annual Growth 1990 to 2000	0.42%	0.65%	0.87%
	Historical Annual Growth 2000 to 2010	-0.02%	-0.09%	0.29%
	Estimated Annual Growth 2010 to 2023	0.22%	0.44%	0.57%
	Projected Annual Growth 2023 to 2028	0.77%	0.83%	1.03%
	Population per Household	2.34	2.27	2.35
Population by Race	White	75.9%	76.1%	69.2%
	Black or African American	8.5%	7.0%	9.1%
	Asian & Pacific Islander	6.1%	6.3%	8.3%
	Other Races	4.2%	5.3%	5.6%
	Hispanic Population	5.4%	5.3%	7.8%
Income	Average Household Income	\$119,642	\$122,450	\$124,099
	Median Household Income	\$97,947	\$96,557	\$92,778
	Per Capita Income	\$51,192	\$53,850	\$52,782
Education (Age 25+)	Elementary	1.9%	2.2%	3.1%
	Some High School	1.0%	1.5%	2.5%
	High School Graduate	13.9%	15.8%	16.9%
	Some College	15.7%	17.6%	17.4%
	Associates Degree Only	9.9%	10.9%	9.4%
	Bachelors Degree Only	36.4%	34.5%	33.7%
	Graduate Degree	21.2%	17.5%	16.9%
Business	Number of Businesses	141	2,356	8,044
	Total Number of Employees	3,473	42,910	146,014
	Employees per Business	24.56	18.22	18.15
	Residential Population per Business	73.00	26.47	23.04

This report was produced using data from private and government sources deemed to be reliable and is herein provided without representation or warranty.