

# BLOOMINGDALE HILLS

RIVERVIEW, FL



## SIZE

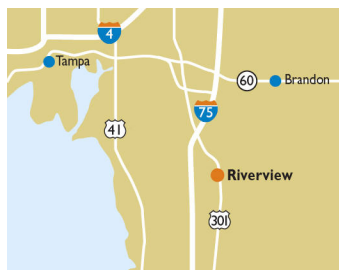
78,442 square feet

## DEMOGRAPHICS

	1 mile	3 mile	5 mile
<b>Population</b>	12,130	104,812	228,206
<b>Households</b>	4,890	42,279	85,723
<b>Median HH Income (\$)</b>	68,806	73,189	74,614

## MAJOR TENANT(S)

Walmart Neighborhood Market



## LOCATION

10863 West Bloomingdale Avenue | Riverview, FL 33578

## PROPERTY HIGHLIGHTS

- Anchored by Walmart Neighborhood Market
- Located in Riverview, a suburb 12 miles southeast of Tampa, with a population exceeding 104,800 in a three-mile radius
- The center is situated at the intersection of Bloomingdale Avenue and Providence Road which benefits from over 56,889 vehicles per day

## LEASING CONTACT

Jamie Pearson  
Mobile (770) 355-0954  
jpearson@phillipsedison.com

## MORE INFO

www.phillipsedison.com



**PHILLIPS EDISON & COMPANY®**

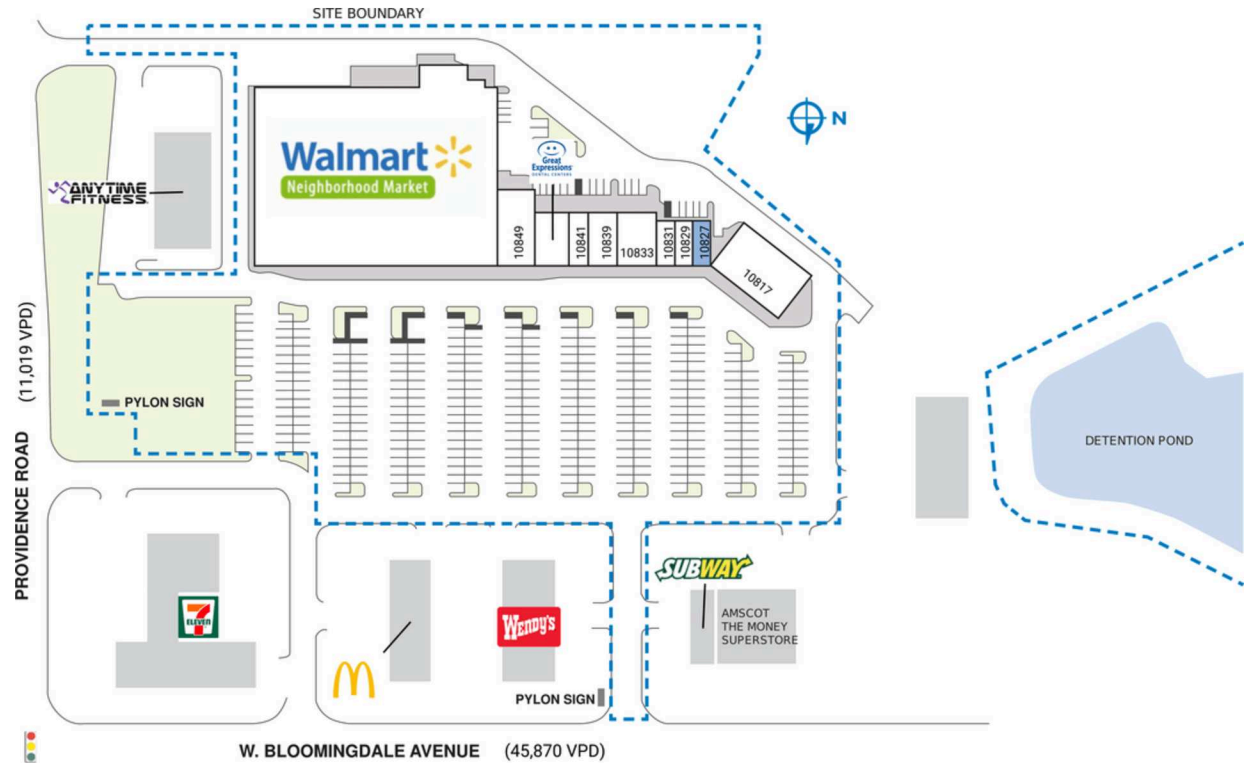
# BLOOMINGDALE HILLS

10863 West Bloomingdale Avenue | Riverview, FL 33578

SPACE	TENANT	SQ. FT.
SHAD1	McDonald's	
SHAD2	Wendy's	
SHAD3	Subway	
SHAD4	Childcare of Brandon	
SHAD5	Anytime Fitness	
10817	Acorn Health	6,000 SF
<b>10827</b>	<b>COMING AVAILABLE</b>	<b>1,000 SF</b>
10829	Sun Nail	1,000 SF
10831	Shanghai Chinese Restaurant	1,000 SF
10833	Oliver Martial Arts	2,700 SF
10839	Katana Japanese Express	2,100 SF
10841	Dancing for Joy	1,200 SF
10845	Great Expressions Dental Center	2,400 SF
10849	Happy's Home Centers	3,286 SF
10863	Walmart Neighborhood Market	57,756 SF
<b>TOTAL SQ. FT.</b>		<b>78,442</b>

SITE LEGEND	
<span style="display:inline-block; width:15px; height:15px; background-color:orange; border:1px solid black;"></span> Available	<span style="display:inline-block; width:15px; height:15px; background-color:gray; border:1px solid black;"></span> Occupied
<span style="display:inline-block; width:15px; height:15px; background-color:blue; border:1px solid black;"></span> Leased (not occupied)	<span style="display:inline-block; width:15px; height:15px; background-color:lightgray; border:1px solid black;"></span> Owned by Others
<span style="display:inline-block; width:15px; height:15px; border:2px dashed blue;"></span> Site Boundary	





# BLOOMINGDALE HILLS

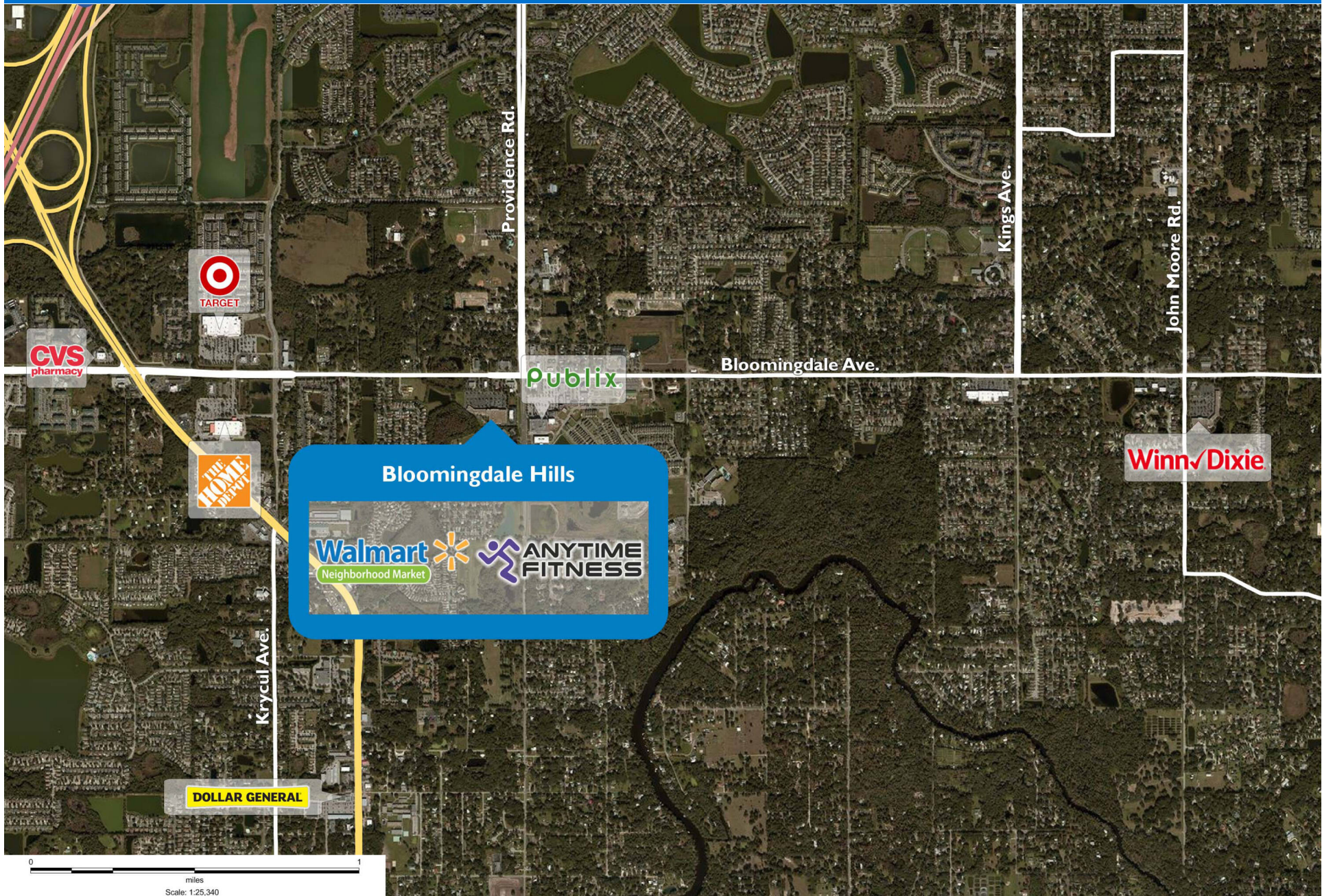
10863 West Bloomingdale Avenue | Riverview, FL 33578





# BLOOMINGDALE HILLS

10863 West Bloomingdale Avenue | Riverview, FL 33578





# Demographic Summary Report

1990 - 2000 Census, 2023 Estimates & 2028 Projections

Calculated using TAS Retrieval Retrieval

Apr 17, 2024



Latitude: 27.891968

Longitude: -82.319855

<b>Bloomingdale Hills Riverview, FL</b>		<b>1.00 Mile Radius</b>	<b>3.00 Mile Radius</b>	<b>5.00 Mile Radius</b>
<b>Population</b>	Q4 2023 Estimated Population	12,130	104,812	228,206
	2028 Projected Population	12,766	112,182	246,752
	2010 Census Population	9,515	79,697	173,216
	2000 Census Population	5,938	51,752	124,989
	1990 Census Population	2,273	32,387	89,001
	Historical Annual Growth 1990 to 2000	10.08%	4.80%	3.45%
	Historical Annual Growth 2000 to 2010	4.83%	4.41%	3.32%
	Estimated Annual Growth 2010 to 2023	1.78%	2.01%	2.03%
	Projected Annual Growth 2023 to 2028	1.03%	1.37%	1.58%
	Median Age	39.3	37.7	38.1
<b>Households</b>	Q4 2023 Estimated Households	4,890	42,279	85,723
	2028 Projected Households	5,145	45,262	92,520
	2010 Census Households	3,946	32,060	64,752
	2000 Census Households	2,249	19,679	45,362
	1990 Census Households	915	11,863	31,510
	Historical Annual Growth 1990 to 2000	9.41%	5.19%	3.71%
	Historical Annual Growth 2000 to 2010	5.78%	5.00%	3.62%
	Estimated Annual Growth 2010 to 2023	1.57%	2.03%	2.06%
	Projected Annual Growth 2023 to 2028	1.02%	1.37%	1.54%
	Population per Household	2.47	2.47	2.64
<b>Population by Race</b>	White	47.0%	43.4%	45.0%
	Black or African American	15.4%	20.0%	18.0%
	Asian & Pacific Islander	3.0%	4.3%	3.8%
	Other Races	4.6%	5.4%	5.0%
	Hispanic Population	30.0%	27.0%	28.2%
<b>Income</b>	Average Household Income	\$84,017	\$90,650	\$93,443
	Median Household Income	\$68,806	\$73,189	\$74,614
	Per Capita Income	\$34,074	\$36,737	\$35,299
<b>Education (Age 25+)</b>	Elementary	5.6%	3.1%	3.6%
	Some High School	6.1%	4.5%	4.9%
	High School Graduate	25.1%	25.7%	26.9%
	Some College	19.2%	21.3%	20.3%
	Associates Degree Only	13.2%	10.6%	11.0%
	Bachelors Degree Only	21.4%	22.9%	22.3%
	Graduate Degree	9.3%	11.9%	11.1%
<b>Business</b>	Number of Businesses	243	2,365	6,286
	Total Number of Employees	3,441	27,978	74,805
	Employees per Business	14.16	11.83	11.90
	Residential Population per Business	49.93	44.32	36.30

This report was produced using data from private and government sources deemed to be reliable and is herein provided without representation or warranty.