

ROLLING MEADOWS SHOPPING CENTER

ROLLING MEADOWS, IL



SIZE

130,212 square feet

DEMOGRAPHICS

	1 mile	3 mile	5 mile
Population	11,722	107,564	296,700
Households	4,619	44,120	118,566
Median HH Income (\$)	104,243	107,161	99,961

MAJOR TENANT(S)

Jewel-Osco
Dollar Tree
Anytime Fitness
Great Clips

LEASING CONTACT

Denny Burns
Mobile (513) 908-1114
dburns@phillipsedison.com

Samantha Goebel
Mobile (513) 614-9068
sgoebel@phillipsedison.com

MORE INFO

www.phillipsedison.com



LOCATION

3068 Kirchoff Road | Rolling Meadows, IL 60008

PROPERTY HIGHLIGHTS

- Anchored by Jewel-Osco
- Additional national tenants include Anytime Fitness, Great Clips, Dollar Tree and Little Caesars
- Located at the intersection of Meadow Drive and Kirchoff Road with 10,700 vehicles per day
- Population exceeds 107,500 in a three-mile radius with an average household income over \$133,300



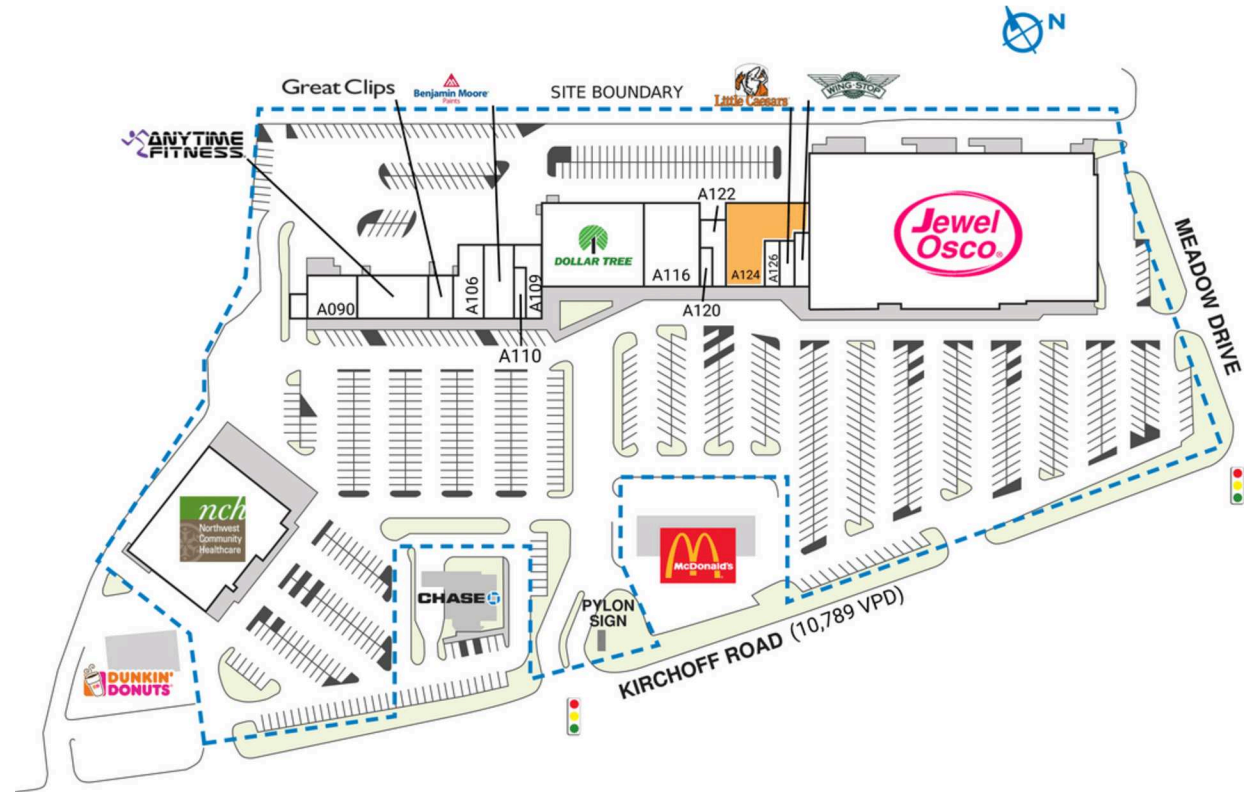
PHILLIPS EDISON & COMPANY®

ROLLING MEADOWS SHOPPING CENTER

3068 Kirchoff Road | Rolling Meadows, IL 60008

SPACE	TENANT	SQ. FT.
A090	Corporate America Family Credit Union	3,059 SF
A100	Anytime Fitness	4,638 SF
A104	Great Clips	719 SF
A106	Phoenix Flame	2,483 SF
A108	Benjamin Moore	3,210 SF
A109	32 Dental 4U	1,800 SF
A110	Cloud Tea	1,000 SF
A112	Dollar Tree	11,800 SF
A116	Rep's Place	6,688 SF
A120	Michoacana Express	560 SF
A122	HK TAEKWONDO	2,200 SF
A124	AVAILABLE	5,420 SF
A126	eyebrow Threading and Beyond	960 SF
A128	Little Caesars	1,045 SF
A130	Wingstop	1,400 SF
MAJA	Northwest Community Hospital	21,000 SF
MAJB	Jewel-Osco	62,230 SF
TOTAL SQ. FT.		130,212

SITE LEGEND	
 Available	 Occupied
 Leased (not occupied)	 Owned by Others
 Site Boundary	



DISCLAIMER - This site plan is for general information purposes only and is not intended to constitute representations and warranties by Landlord as to the ownership of the real property depicted herein or the identity or nature of any occupants thereof.

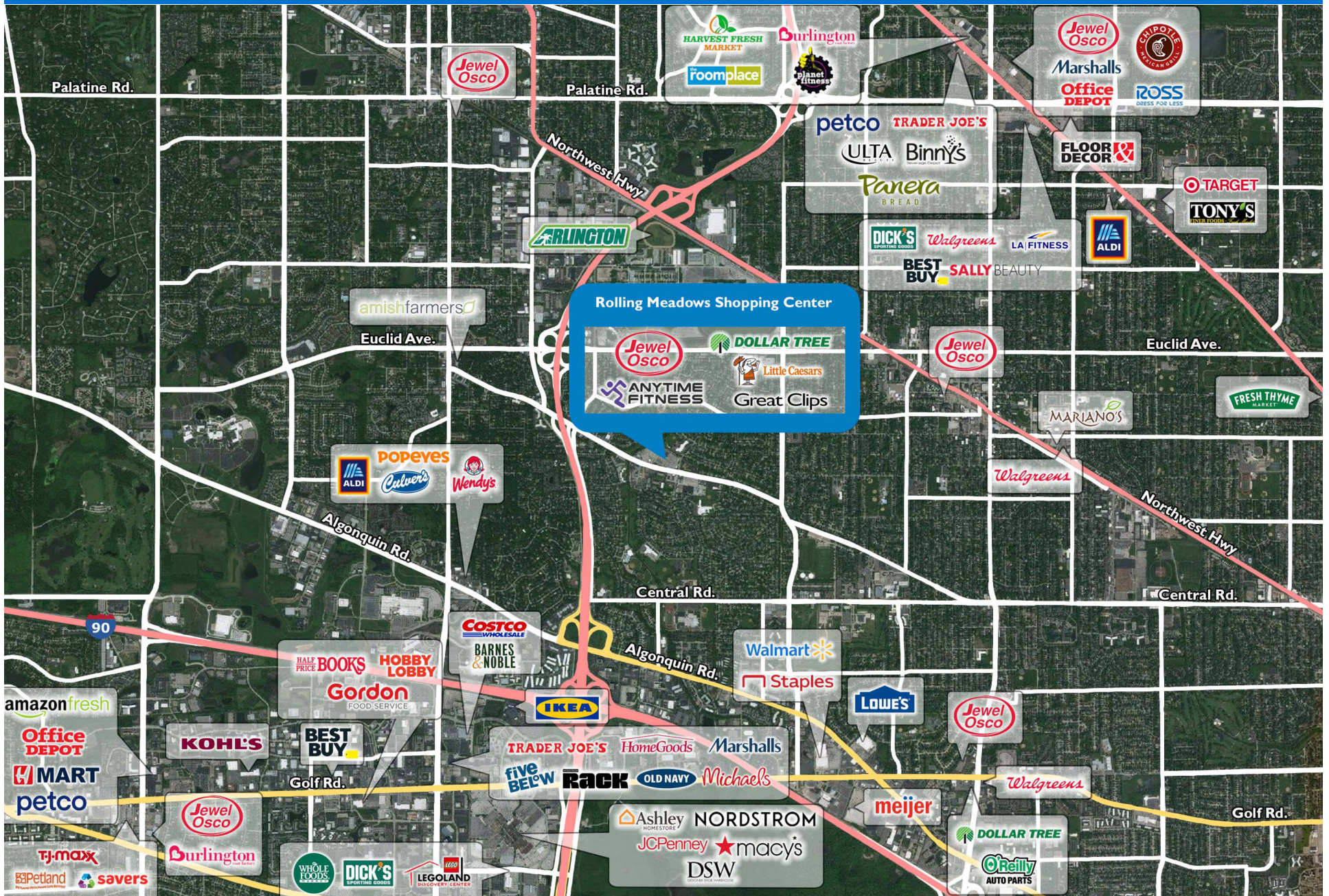
ROLLING MEADOWS SHOPPING CENTER

3068 Kirchoff Road | Rolling Meadows, IL 60008



ROLLING MEADOWS SHOPPING CENTER

3068 Kirchoff Road | Rolling Meadows, IL 60008



Demographic Summary Report

1990 - 2000 Census, 2023 Estimates & 2028 Projections

Calculated using TAS Retrieval Retrieval

Apr 17, 2024



Latitude: 42.079557

Longitude: -88.018847

Rolling Meadows Shopping Center					
Rolling Meadows, IL					
	1.00 Mile Radius	3.00 Mile Radius	5.00 Mile Radius		
Population	Q4 2023 Estimated Population	11,722	107,564	296,700	
	2028 Projected Population	11,573	106,410	292,854	
	2010 Census Population	11,374	104,857	290,781	
	2000 Census Population	11,574	104,149	292,712	
	1990 Census Population	11,476	101,465	274,741	
	Historical Annual Growth 1990 to 2000	0.09%	0.26%	0.64%	
	Historical Annual Growth 2000 to 2010	-0.17%	0.07%	-0.07%	
	Estimated Annual Growth 2010 to 2023	0.22%	0.19%	0.15%	
	Projected Annual Growth 2023 to 2028	-0.26%	-0.22%	-0.26%	
	Median Age	44.3	43.2	42.2	
Households	Q4 2023 Estimated Households	4,619	44,120	118,566	
	2028 Projected Households	4,559	43,688	117,047	
	2010 Census Households	4,419	42,576	115,565	
	2000 Census Households	4,287	41,522	115,410	
	1990 Census Households	4,015	39,225	106,801	
	Historical Annual Growth 1990 to 2000	0.66%	0.57%	0.78%	
	Historical Annual Growth 2000 to 2010	0.30%	0.25%	0.01%	
	Estimated Annual Growth 2010 to 2023	0.32%	0.26%	0.19%	
	Projected Annual Growth 2023 to 2028	-0.26%	-0.20%	-0.26%	
	Population per Household	2.50	2.41	2.49	
Population by Race	White	71.0%	70.4%	63.8%	
	Black or African American	0.8%	2.3%	2.8%	
	Asian & Pacific Islander	6.0%	12.2%	14.8%	
	Other Races	3.1%	3.1%	3.0%	
	Hispanic Population	19.1%	11.9%	15.6%	
Income	Average Household Income	\$117,205	\$133,384	\$126,826	
	Median Household Income	\$104,243	\$107,161	\$99,961	
	Per Capita Income	\$46,853	\$55,258	\$51,007	
Education (Age 25+)	Elementary	4.1%	2.7%	4.4%	
	Some High School	3.2%	2.9%	3.1%	
	High School Graduate	24.9%	17.5%	18.4%	
	Some College	17.9%	14.8%	15.9%	
	Associates Degree Only	9.2%	7.3%	7.6%	
	Bachelors Degree Only	26.7%	33.5%	31.1%	
	Graduate Degree	14.0%	21.2%	19.5%	
Business	Number of Businesses	308	4,715	10,002	
	Total Number of Employees	5,666	74,450	140,723	
	Employees per Business	18.39	15.79	14.07	
	Residential Population per Business	38.04	22.81	29.66	

This report was produced using data from private and government sources deemed to be reliable and is herein provided without representation or warranty.