



SIZE

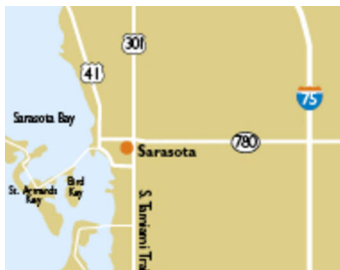
49,271 square feet

DEMOGRAPHICS

	1 mile	3 mile	5 mile
Population	12,931	62,977	136,549
Households	6,795	28,341	62,745
Median HH Income (\$)	82,899	72,253	76,235

MAJOR TENANT(S)

Publix
The UPS Store



LOCATION

1044 N. Tamiami Trail | Sarasota, FL 34236

PROPERTY HIGHLIGHTS

- Anchored by Publix, the number one grocer in the Sarasota area
- Additional national tenants include Phenix Salon Suites and The UPS Store
- Located in Sarasota, Florida with a population exceeding 62,900 in a three-mile radius
- The center is located on Tamiami Trial, one of the major thoroughfares in Sarasota connecting to Tampa and Miami

LEASING CONTACT

Mark Porter
Mobile (803) 338-6004
mporter@phillipsedison.com

MORE INFO

www.phillipsedison.com

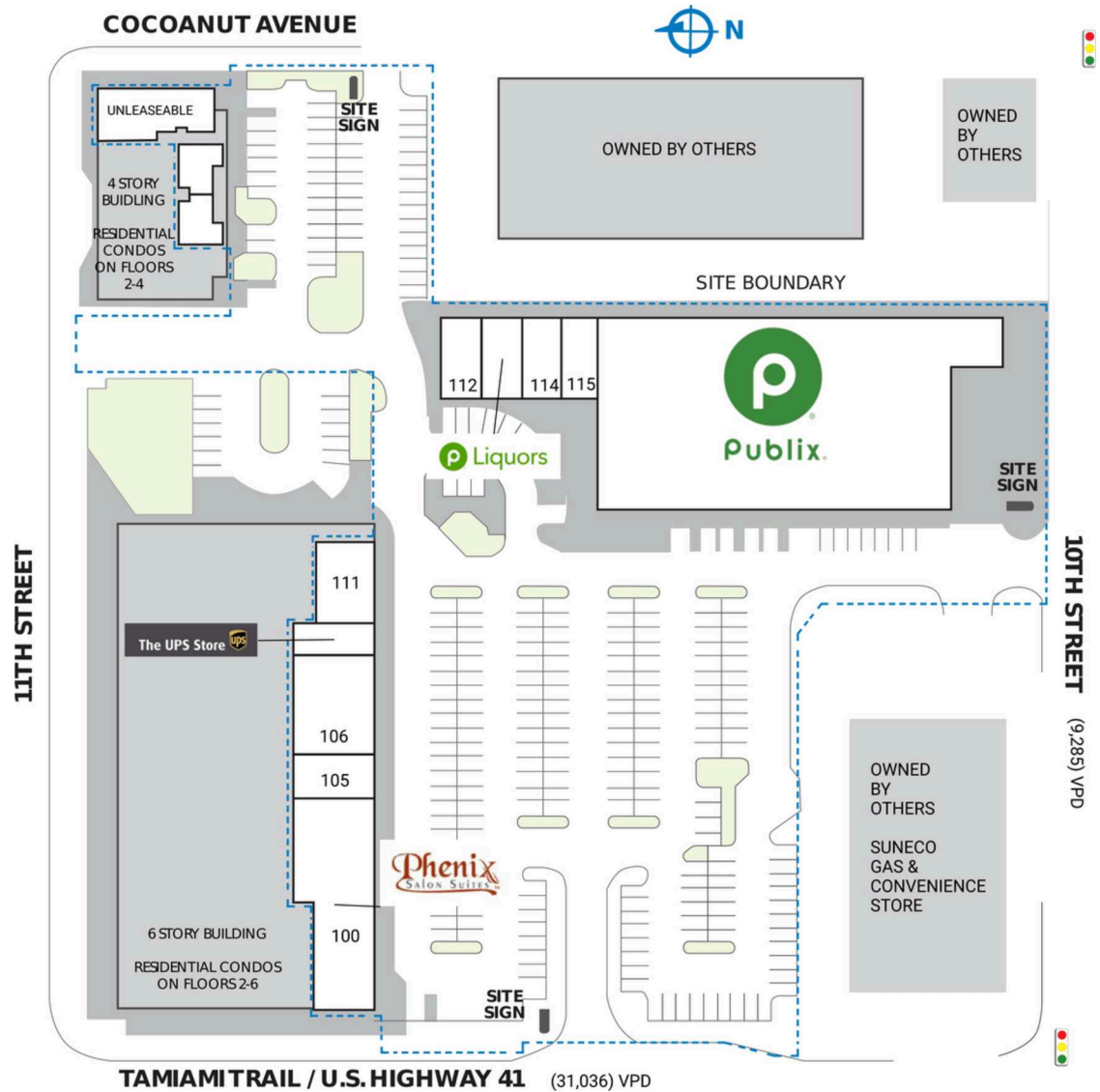


BROADWAY PROMENADE

1044 N. Tamiami Trail | Sarasota, FL 34236

SPACE	TENANT	SQ. FT.
Shad1	Broadway Promenade Condominium Association	
Shad2	Commercial Association	
100	Phenix Salon Suites	7,252 SF
105	Dream Earth Bowls	1,485 SF
106	Waterside Dental Sarasota	2,970 SF
108	The UPS Store	990 SF
111	LIT SPA and Wellness	2,586 SF
112	Saigon Scoops & Sips	1,354 SF
113	Publix Liquors	1,350 SF
114	Lotus Nails and Spa	1,350 SF
115	China Garden	1,134 SF
116	Publix	28,800 SF
2102	ILG Admissions	
2103	Real X Properties	
2104	Real X Properties	
TOTAL SQ. FT.		49,271

SITE LEGEND	
 Available	 Occupied
 Leased (not occupied)	 Owned by Others
 Site Boundary	



DISCLAIMER - This site plan is for general information purposes only and is not intended to constitute representations and warranties by Landlord as to the ownership of the real property depicted herein or the identity or nature of any occupants thereof.

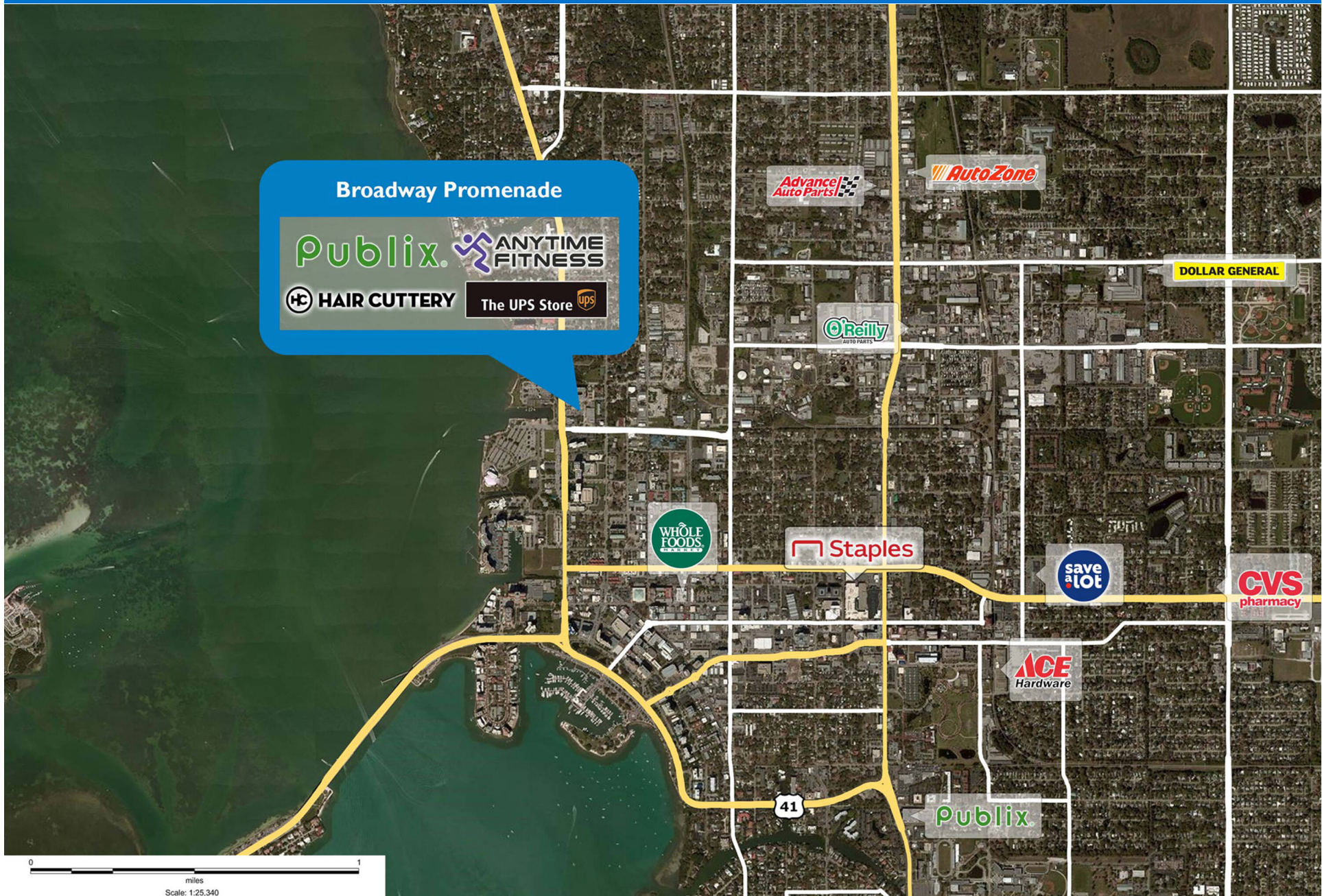
BROADWAY PROMENADE

1044 N. Tamiami Trail | Sarasota, FL 34236



BROADWAY PROMENADE

1044 N. Tamiami Trail | Sarasota, FL 34236



Broadway Promenade

Publix. **ANYTIME FITNESS**

HAIR CUTTERY **The UPS Store**

Advance Auto Parts

AutoZone

DOLLAR GENERAL

O'Reilly

WHOLE FOODS

Staples

save a lot

CVS pharmacy

ACE Hardware

Publix

41

0 1 miles
Scale: 1:25,340

Demographic Summary Report

1990 - 2000 Census, 2023 Estimates & 2028 Projections

Calculated using TAS Retrieval Retrieval

Apr 17, 2024



Latitude: 27.345706

Longitude: -82.545536

Broadway Promenade Sarasota, FL		1.00 Mile Radius	3.00 Mile Radius	5.00 Mile Radius
Population	Q4 2023 Estimated Population	12,931	62,977	136,549
	2028 Projected Population	13,439	61,895	133,052
	2010 Census Population	10,735	57,261	123,931
	2000 Census Population	9,790	57,427	125,174
	1990 Census Population	9,340	55,431	114,233
	Historical Annual Growth 1990 to 2000	0.47%	0.35%	0.92%
	Historical Annual Growth 2000 to 2010	0.93%	-0.03%	-0.10%
	Estimated Annual Growth 2010 to 2023	1.36%	0.69%	0.71%
	Projected Annual Growth 2023 to 2028	0.77%	-0.35%	-0.52%
	Median Age	57.9	50.1	52.7
Households	Q4 2023 Estimated Households	6,795	28,341	62,745
	2028 Projected Households	7,115	27,965	61,272
	2010 Census Households	5,051	25,162	56,288
	2000 Census Households	4,237	25,230	56,397
	1990 Census Households	4,318	24,505	50,382
	Historical Annual Growth 1990 to 2000	-0.19%	0.29%	1.13%
	Historical Annual Growth 2000 to 2010	1.77%	-0.03%	-0.02%
	Estimated Annual Growth 2010 to 2023	2.18%	0.87%	0.79%
	Projected Annual Growth 2023 to 2028	0.92%	-0.27%	-0.47%
	Population per Household	1.79	2.10	2.11
Population by Race	White	65.1%	60.8%	70.3%
	Black or African American	16.1%	14.2%	8.0%
	Asian & Pacific Islander	2.2%	2.4%	2.0%
	Other Races	3.0%	3.5%	3.6%
	Hispanic Population	13.5%	19.2%	16.2%
Income	Average Household Income	\$134,534	\$114,861	\$117,768
	Median Household Income	\$82,899	\$72,253	\$76,235
	Per Capita Income	\$72,257	\$53,487	\$55,132
Education (Age 25+)	Elementary	2.8%	3.9%	3.2%
	Some High School	5.6%	6.7%	5.0%
	High School Graduate	19.9%	27.2%	26.3%
	Some College	13.5%	16.8%	17.8%
	Associates Degree Only	6.8%	7.9%	8.4%
	Bachelors Degree Only	28.2%	21.1%	22.2%
	Graduate Degree	23.3%	16.4%	17.0%
Business	Number of Businesses	1,608	4,933	8,142
	Total Number of Employees	14,638	45,386	76,684
	Employees per Business	9.10	9.20	9.42
	Residential Population per Business	8.04	12.77	16.77

This report was produced using data from private and government sources deemed to be reliable and is herein provided without representation or warranty.