



**SIZE**

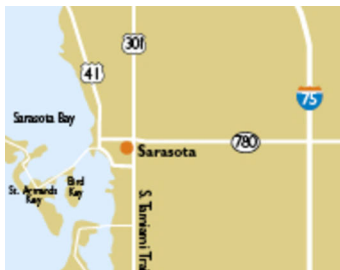
49,271 square feet

**DEMOGRAPHICS**

	1 mile	3 mile	5 mile
<b>Population</b>	12,931	62,977	136,549
<b>Households</b>	6,795	28,341	62,745
<b>Median HH Income (\$)</b>	82,899	72,253	76,235

**MAJOR TENANT(S)**

Publix  
The UPS Store



**LOCATION**

1044 N. Tamiami Trail | Sarasota, FL 34236

**PROPERTY HIGHLIGHTS**

- Anchored by Publix, the number one grocer in the Sarasota area
- Additional national tenants include Phenix Salon Suites and The UPS Store
- Located in Sarasota, Florida with a population exceeding 62,900 in a three-mile radius
- The center is located on Tamiami Trial, one of the major thoroughfares in Sarasota connecting to Tampa and Miami

**LEASING CONTACT**

Mark Porter  
Mobile (803) 338-6004  
mporter@phillipsedison.com

**MORE INFO**

www.phillipsedison.com



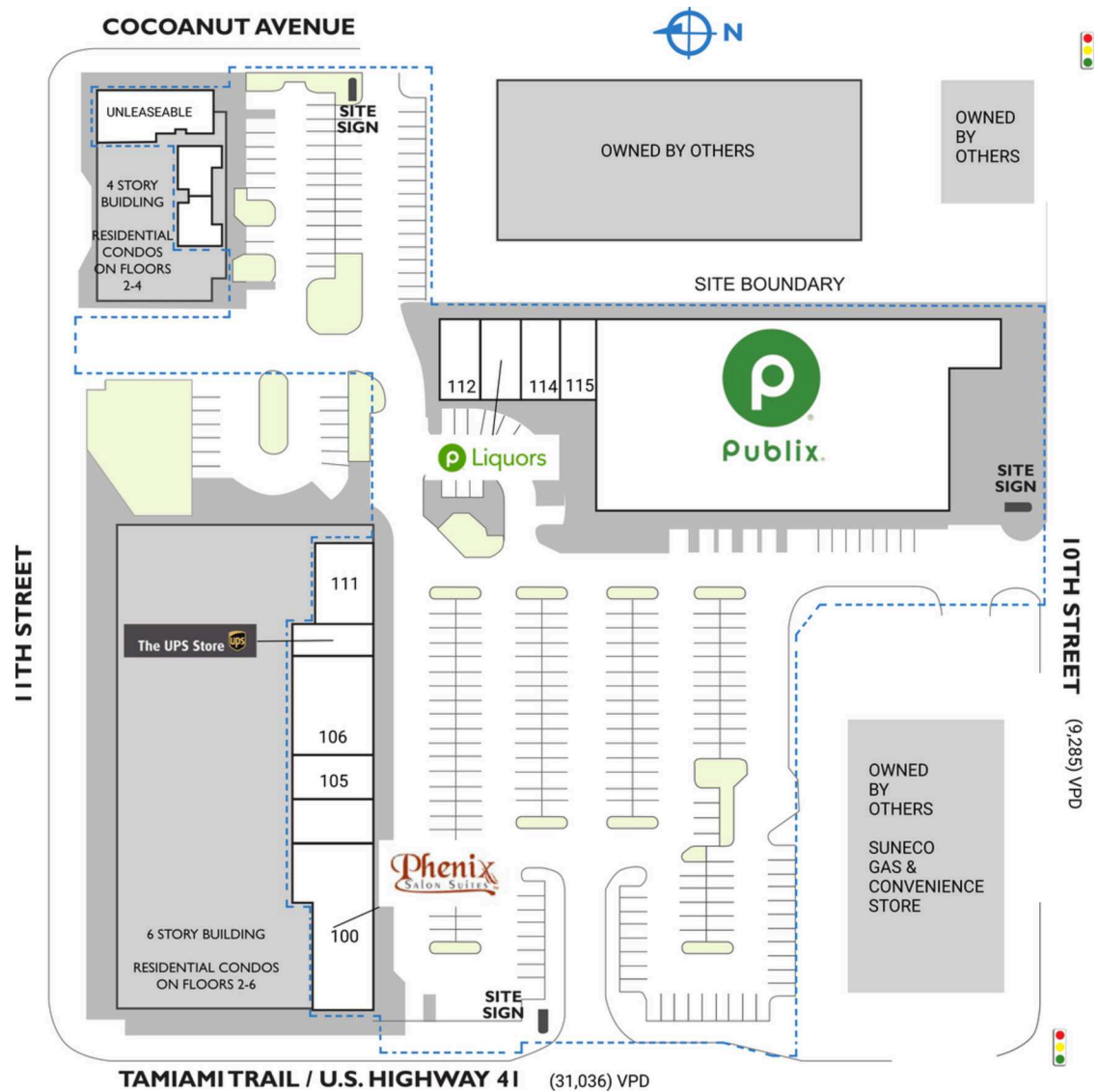
# BROADWAY PROMENADE

1044 N. Tamiami Trail | Sarasota, FL 34236

SPACE	TENANT	SQ. FT.
Shad1	Broadway Promenade Condominium Association	
Shad2	Commercial Association	
100	Phenix Salon Suites	7,252 SF
105	Dream Earth Bowls	1,485 SF
106	Waterside Dental Sarasota	2,970 SF
108	The UPS Store	990 SF
111	LIT SPA and Wellness	2,586 SF
112	Saigon Scoops & Sips	1,354 SF
113	Publix Liquors	1,350 SF
114	Lotus Nails and Spa	1,350 SF
115	China Garden	1,134 SF
116	Publix	28,800 SF
2102	ILG Admissions	
2103	Real X Properties	
2104	Real X Properties	
<b>TOTAL SQ. FT.</b>		<b>49,271</b>

SITE LEGEND	
<span style="display:inline-block; width:15px; height:15px; background-color:orange; border:1px solid black;"></span> Available	<span style="display:inline-block; width:15px; height:15px; background-color:gray; border:1px solid black;"></span> Occupied
<span style="display:inline-block; width:15px; height:15px; background-color:blue; border:1px solid black;"></span> Leased (not occupied)	<span style="display:inline-block; width:15px; height:15px; background-color:lightgray; border:1px solid black;"></span> Owned by Others
<span style="display:inline-block; width:15px; border-bottom:1px dashed blue;"></span> Site Boundary	



DISCLAIMER - This site plan is for general information purposes only and is not intended to constitute representations and warranties by Landlord as to the ownership of the real property depicted herein or the identity or nature of any occupants thereof.

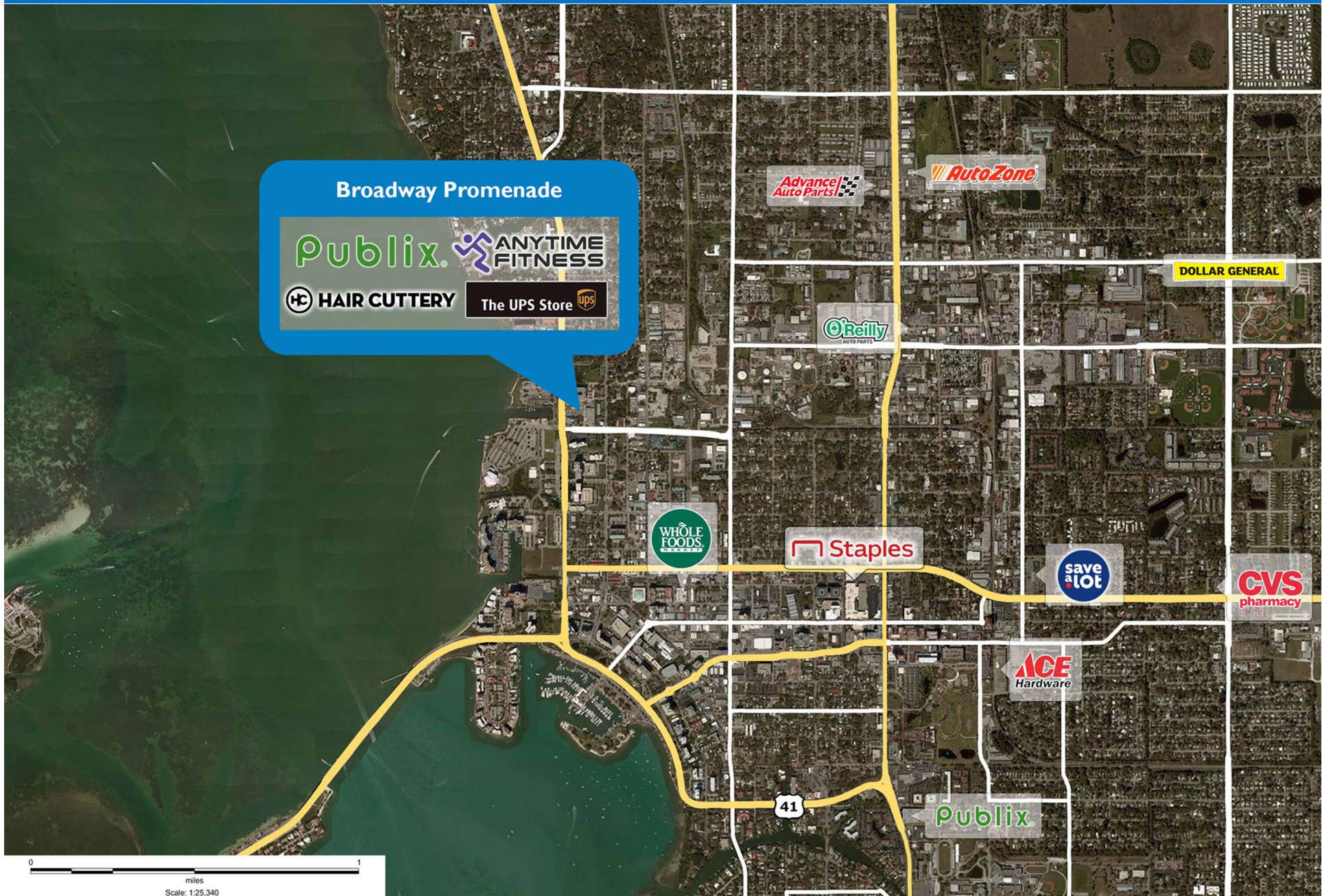
# BROADWAY PROMENADE

1044 N. Tamiami Trail | Sarasota, FL 34236



# BROADWAY PROMENADE

1044 N. Tamiami Trail | Sarasota, FL 34236



# Demographic Summary Report

1990 - 2000 Census, 2023 Estimates & 2028 Projections

Calculated using TAS Retrieval Retrieval

Apr 17, 2024



Latitude: 27.345706

Longitude: -82.545536

<b>Broadway Promenade Sarasota, FL</b>		<b>1.00 Mile Radius</b>	<b>3.00 Mile Radius</b>	<b>5.00 Mile Radius</b>
<b>Population</b>	Q4 2023 Estimated Population	12,931	62,977	136,549
	2028 Projected Population	13,439	61,895	133,052
	2010 Census Population	10,735	57,261	123,931
	2000 Census Population	9,790	57,427	125,174
	1990 Census Population	9,340	55,431	114,233
	Historical Annual Growth 1990 to 2000	0.47%	0.35%	0.92%
	Historical Annual Growth 2000 to 2010	0.93%	-0.03%	-0.10%
	Estimated Annual Growth 2010 to 2023	1.36%	0.69%	0.71%
	Projected Annual Growth 2023 to 2028	0.77%	-0.35%	-0.52%
	Median Age	57.9	50.1	52.7
<b>Households</b>	Q4 2023 Estimated Households	6,795	28,341	62,745
	2028 Projected Households	7,115	27,965	61,272
	2010 Census Households	5,051	25,162	56,288
	2000 Census Households	4,237	25,230	56,397
	1990 Census Households	4,318	24,505	50,382
	Historical Annual Growth 1990 to 2000	-0.19%	0.29%	1.13%
	Historical Annual Growth 2000 to 2010	1.77%	-0.03%	-0.02%
	Estimated Annual Growth 2010 to 2023	2.18%	0.87%	0.79%
	Projected Annual Growth 2023 to 2028	0.92%	-0.27%	-0.47%
	Population per Household	1.79	2.10	2.11
<b>Population by Race</b>	White	65.1%	60.8%	70.3%
	Black or African American	16.1%	14.2%	8.0%
	Asian & Pacific Islander	2.2%	2.4%	2.0%
	Other Races	3.0%	3.5%	3.6%
	Hispanic Population	13.5%	19.2%	16.2%
<b>Income</b>	Average Household Income	\$134,534	\$114,861	\$117,768
	Median Household Income	\$82,899	\$72,253	\$76,235
	Per Capita Income	\$72,257	\$53,487	\$55,132
<b>Education (Age 25+)</b>	Elementary	2.8%	3.9%	3.2%
	Some High School	5.6%	6.7%	5.0%
	High School Graduate	19.9%	27.2%	26.3%
	Some College	13.5%	16.8%	17.8%
	Associates Degree Only	6.8%	7.9%	8.4%
	Bachelors Degree Only	28.2%	21.1%	22.2%
	Graduate Degree	23.3%	16.4%	17.0%
<b>Business</b>	Number of Businesses	1,608	4,933	8,142
	Total Number of Employees	14,638	45,386	76,684
	Employees per Business	9.10	9.20	9.42
	Residential Population per Business	8.04	12.77	16.77

This report was produced using data from private and government sources deemed to be reliable and is herein provided without representation or warranty.