



SIZE

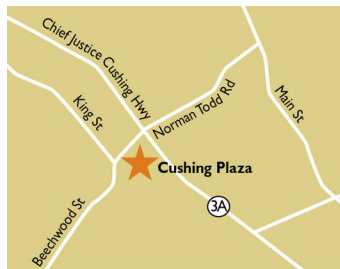
71,210 square feet

DEMOGRAPHICS

| | 1 mile | 3 mile | 5 mile |
|------------------------------|---------|---------|---------|
| Population | 2,482 | 17,273 | 48,907 |
| Households | 922 | 6,313 | 18,060 |
| Median HH Income (\$) | 167,596 | 165,224 | 159,137 |

MAJOR TENANT(S)

Shaw's Supermarket
Walgreens



LOCATION

739 Chief Justice Cushing Highway | Cohasset, MA 02025

PROPERTY HIGHLIGHTS

- Anchored by Shaw's, a subsidiary of Albertsons
- Additional national and regional tenants include Walgreens, Rockland Trust Bank, Fitness Together and The UPS Store
- Located in Cohasset, Massachusetts with a population exceeding 17,200 in a three-mile radius with an average household income greater than \$248,300
- The center is located on Route 3A which benefits from over 15,700 vehicles per day

LEASING CONTACT

Marissa Visconsi
Mobile (303) 547-4386
mvisconsi@phillipsedison.com



MORE INFO

www.phillipsedison.com



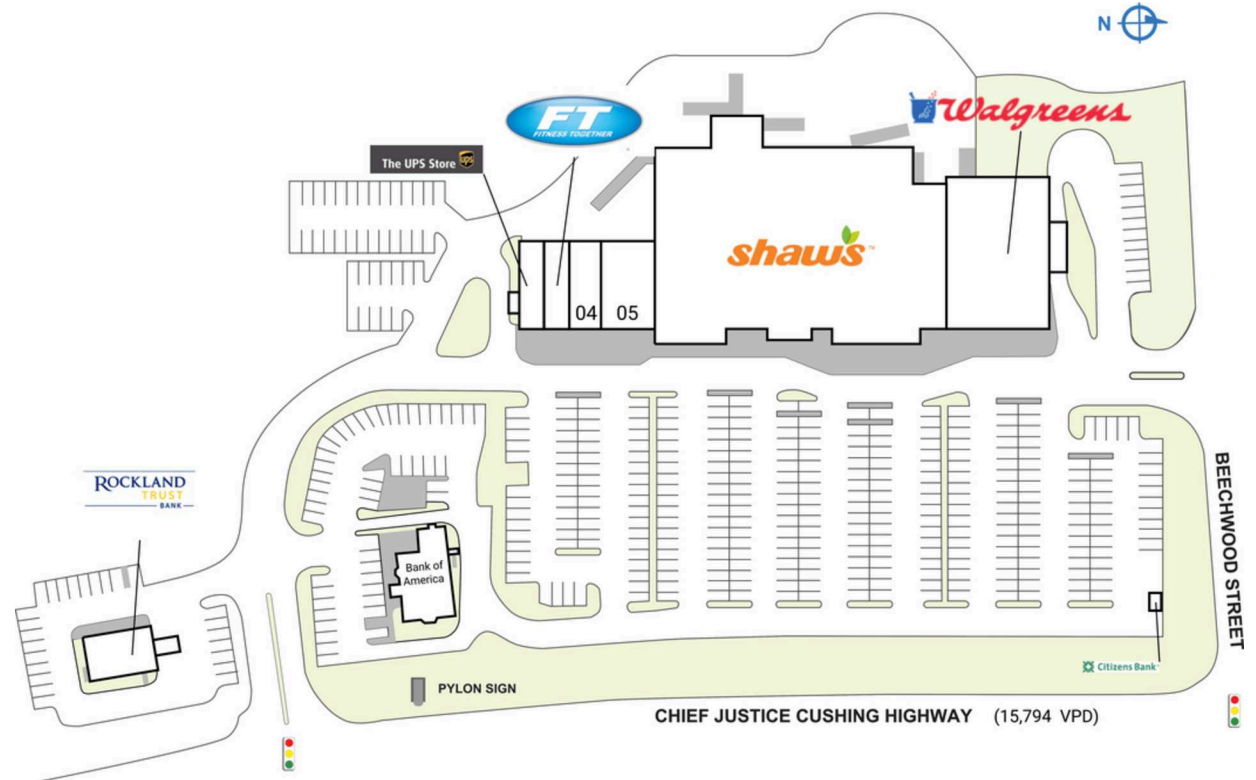
CUSHING PLAZA

739 Chief Justice Cushing Highway | Cohasset, MA 02025

| SPACE | TENANT | SQ. FT. |
|----------------------|------------------------|---------------|
| ATM2 | Citizens Bank | |
| PAD | Bank of America | |
| 01 | Rockland Trust Company | 2,400 SF |
| 02 | The UPS Store | 1,490 SF |
| 03 | Fitness Together | 1,598 SF |
| 04 | Jogi's Liquor | 2,397 SF |
| 05 | Buttonwood Books | 4,150 SF |
| 06 | Shaw's Supermarket | 45,675 SF |
| 07 | Walgreens | 13,500 SF |
| TOTAL SQ. FT. | | 71,210 |

SITE LEGEND

| | |
|---|--|
| Available | Occupied |
| Leased (not occupied) | Owned by Others |
| Site Boundary | |



DISCLAIMER - This site plan is for general information purposes only and is not intended to constitute representations and warranties by Landlord as to the ownership of the real property depicted herein or the identity or nature of any occupants thereof.

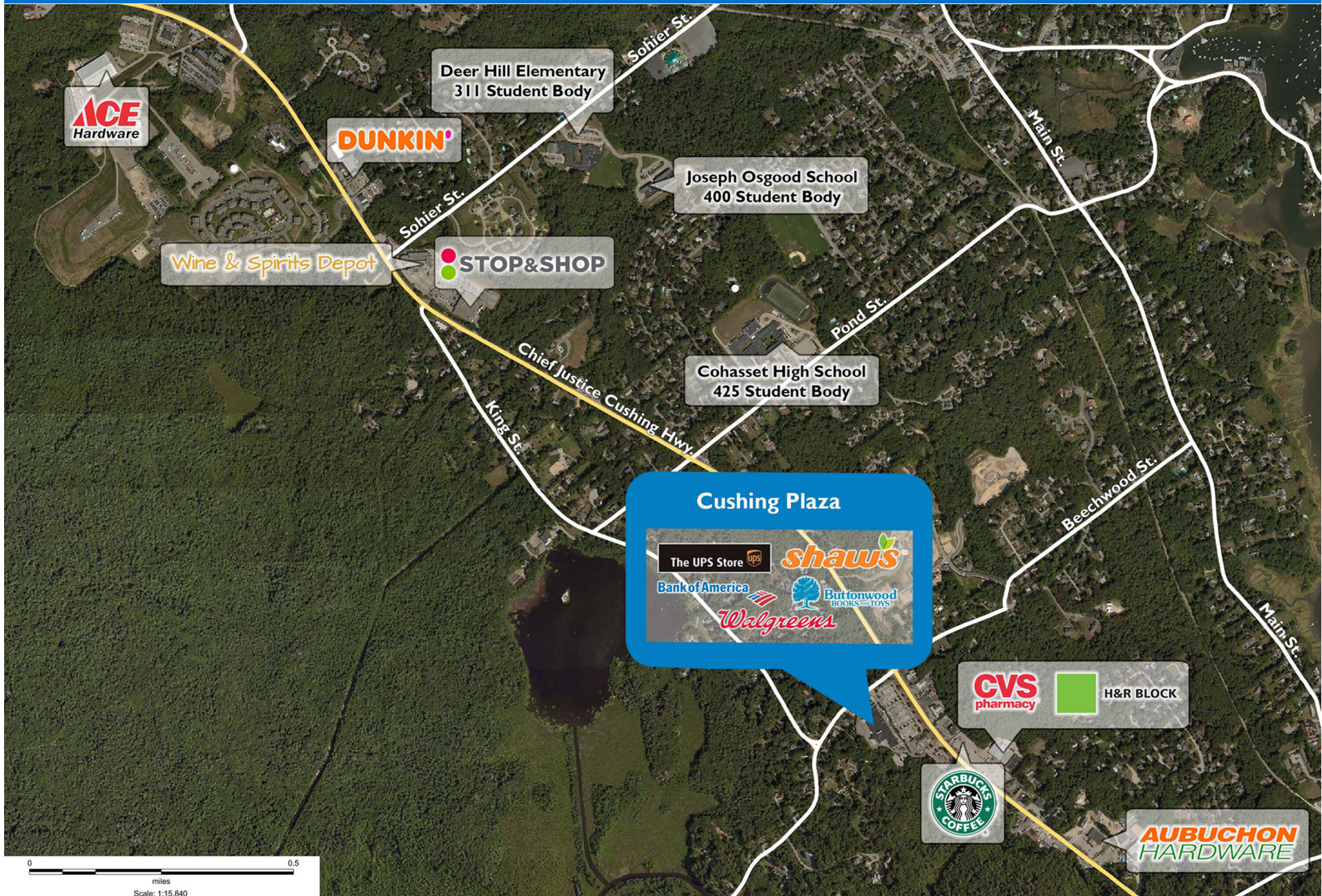
CUSHING PLAZA

739 Chief Justice Cushing Highway | Cohasset, MA 02025



CUSHING PLAZA

739 Chief Justice Cushing Highway | Cohasset, MA 02025



Demographic Summary Report

1990 - 2000 Census, 2023 Estimates & 2028 Projections

Calculated using TAS Retrieval Retrieval

Apr 17, 2024



Latitude: 42.222106

Longitude: -70.805343

| Cushing Plaza Cohasset, MA | | 1.00 Mile Radius | 3.00 Mile Radius | 5.00 Mile Radius |
|-------------------------------|---------------------------------------|------------------|------------------|------------------|
| Population | Q4 2023 Estimated Population | 2,482 | 17,273 | 48,907 |
| | 2028 Projected Population | 2,470 | 17,377 | 49,197 |
| | 2010 Census Population | 2,138 | 15,716 | 45,343 |
| | 2000 Census Population | 1,943 | 15,279 | 43,755 |
| | 1990 Census Population | 1,906 | 14,405 | 42,301 |
| | Historical Annual Growth 1990 to 2000 | 0.19% | 0.59% | 0.34% |
| | Historical Annual Growth 2000 to 2010 | 0.96% | 0.28% | 0.36% |
| | Estimated Annual Growth 2010 to 2023 | 1.09% | 0.69% | 0.55% |
| | Projected Annual Growth 2023 to 2028 | -0.10% | 0.12% | 0.12% |
| | Median Age | 45.2 | 45.9 | 46.6 |
| Households | Q4 2023 Estimated Households | 922 | 6,313 | 18,060 |
| | 2028 Projected Households | 917 | 6,350 | 18,160 |
| | 2010 Census Households | 779 | 5,670 | 16,881 |
| | 2000 Census Households | 713 | 5,527 | 16,175 |
| | 1990 Census Households | 683 | 5,121 | 14,981 |
| | Historical Annual Growth 1990 to 2000 | 0.44% | 0.77% | 0.77% |
| | Historical Annual Growth 2000 to 2010 | 0.88% | 0.26% | 0.43% |
| | Estimated Annual Growth 2010 to 2023 | 1.24% | 0.78% | 0.49% |
| | Projected Annual Growth 2023 to 2028 | -0.11% | 0.12% | 0.11% |
| | Population per Household | 2.69 | 2.73 | 2.69 |
| Population by Race | White | 92.4% | 93.1% | 92.7% |
| | Black or African American | 0.5% | 0.3% | 0.4% |
| | Asian & Pacific Islander | 1.6% | 1.7% | 1.6% |
| | Other Races | 4.1% | 3.1% | 3.6% |
| | Hispanic Population | 1.4% | 1.7% | 1.8% |
| Income | Average Household Income | \$236,635 | \$248,356 | \$233,384 |
| | Median Household Income | \$167,596 | \$165,224 | \$159,137 |
| | Per Capita Income | \$88,058 | \$90,906 | \$86,528 |
| Education (Age 25+) | Elementary | 0.4% | 0.5% | 0.9% |
| | Some High School | 1.0% | 0.8% | 0.9% |
| | High School Graduate | 8.5% | 9.5% | 11.4% |
| | Some College | 12.9% | 9.3% | 9.6% |
| | Associates Degree Only | 7.7% | 7.1% | 7.8% |
| | Bachelors Degree Only | 40.0% | 41.7% | 38.5% |
| | Graduate Degree | 29.5% | 31.0% | 30.9% |
| Business | Number of Businesses | 130 | 486 | 1,521 |
| | Total Number of Employees | 879 | 3,590 | 13,999 |
| | Employees per Business | 6.75 | 7.39 | 9.20 |
| | Residential Population per Business | 19.06 | 35.55 | 32.15 |

This report was produced using data from private and government sources deemed to be reliable and is herein provided without representation or warranty.