



SIZE

71,210 square feet

DEMOGRAPHICS

	1 mile	3 mile	5 mile
<b>Population</b>	2,482	17,273	48,907
<b>Households</b>	922	6,313	18,060
<b>Median HH Income (\$)</b>	167,596	165,224	159,137

MAJOR TENANT(S)

Shaw's Supermarket  
Walgreens



LOCATION

739 Chief Justice Cushing Highway | Cohasset, MA 02025

PROPERTY HIGHLIGHTS

- Anchored by Shaw's, a subsidiary of Albertsons
- Additional national and regional tenants include Walgreens, Rockland Trust Bank, Fitness Together and The UPS Store
- Located in Cohasset, Massachusetts with a population exceeding 17,200 in a three-mile radius with an average household income greater than \$248,300
- The center is located on Route 3A which benefits from over 15,700 vehicles per day

LEASING CONTACT

Marissa Visconsi  
Mobile (303) 547-4386  
mvisconsi@phillipsedison.com



MORE INFO

www.phillipsedison.com



# CUSHING PLAZA

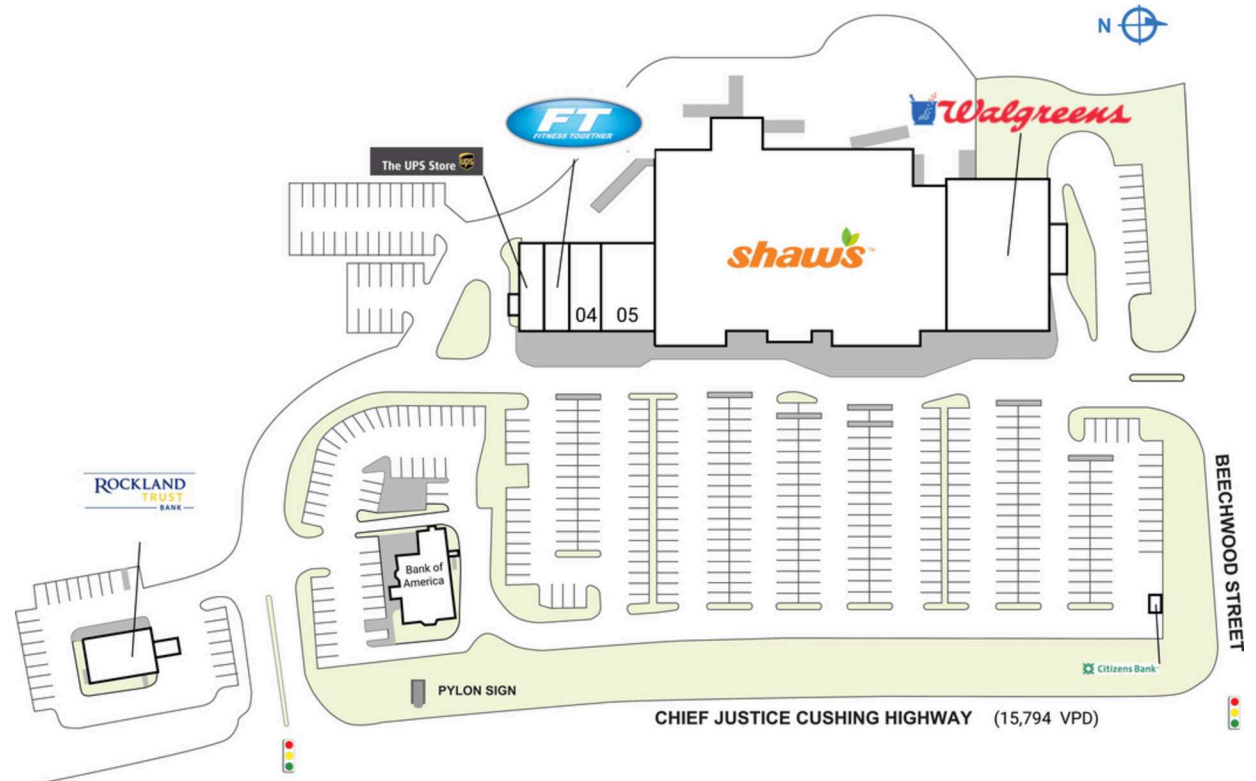
739 Chief Justice Cushing Highway | Cohasset, MA 02025

SPACE	TENANT	SQ. FT.
ATM2	Citizens Bank	
PAD	Bank of America	
01	Rockland Trust Company	2,400 SF
02	The UPS Store	1,490 SF
03	Fitness Together	1,598 SF
04	Jogi's Liquor	2,397 SF
05	Buttonwood Books	4,150 SF
06	Shaw's Supermarket	45,675 SF
07	Walgreens	13,500 SF
<b>TOTAL SQ. FT.</b>		<b>71,210</b>

**SITE LEGEND**

<span style="display:inline-block; width:15px; height:15px; background-color:orange; border:1px solid black;"></span> Available	<span style="display:inline-block; width:15px; height:15px; background-color:white; border:1px solid black;"></span> Occupied
<span style="display:inline-block; width:15px; height:15px; background-color:blue; border:1px solid black;"></span> Leased (not occupied)	<span style="display:inline-block; width:15px; height:15px; background-color:gray; border:1px solid black;"></span> Owned by Others
<span style="display:inline-block; width:15px; height:15px; border:2px dashed blue;"></span> Site Boundary	



DISCLAIMER - This site plan is for general information purposes only and is not intended to constitute representations and warranties by Landlord as to the ownership of the real property depicted herein or the identity or nature of any occupants thereof.

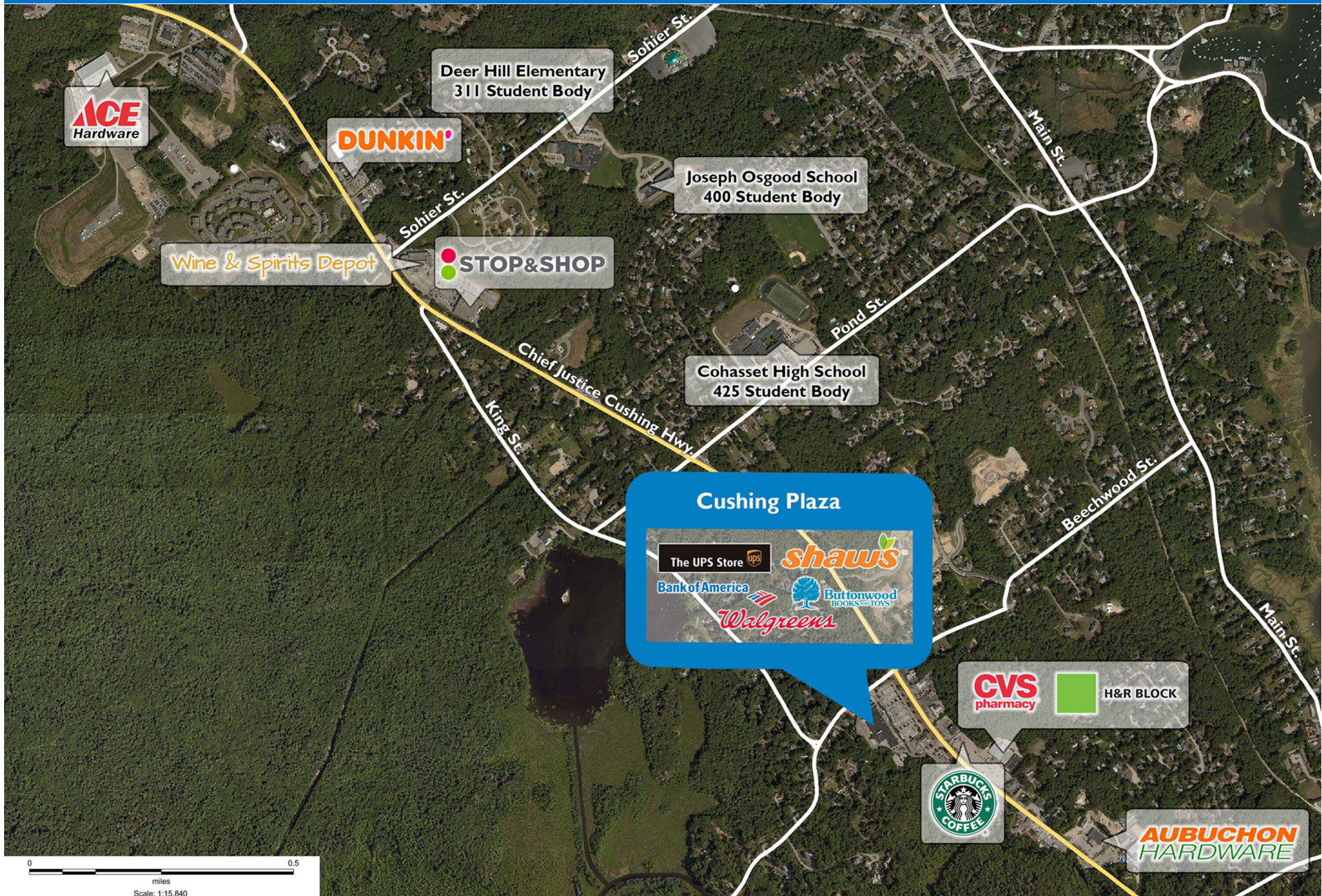
# CUSHING PLAZA

739 Chief Justice Cushing Highway | Cohasset, MA 02025



# CUSHING PLAZA

739 Chief Justice Cushing Highway | Cohasset, MA 02025



# Demographic Summary Report

1990 - 2000 Census, 2023 Estimates & 2028 Projections

Calculated using TAS Retrieval Retrieval

Apr 17, 2024



Latitude: 42.222106

Longitude: -70.805343

Cushing Plaza Cohasset, MA		1.00 Mile Radius	3.00 Mile Radius	5.00 Mile Radius
Population	Q4 2023 Estimated Population	2,482	17,273	48,907
	2028 Projected Population	2,470	17,377	49,197
	2010 Census Population	2,138	15,716	45,343
	2000 Census Population	1,943	15,279	43,755
	1990 Census Population	1,906	14,405	42,301
	Historical Annual Growth 1990 to 2000	0.19%	0.59%	0.34%
	Historical Annual Growth 2000 to 2010	0.96%	0.28%	0.36%
	Estimated Annual Growth 2010 to 2023	1.09%	0.69%	0.55%
	Projected Annual Growth 2023 to 2028	-0.10%	0.12%	0.12%
	Median Age	45.2	45.9	46.6
Households	Q4 2023 Estimated Households	922	6,313	18,060
	2028 Projected Households	917	6,350	18,160
	2010 Census Households	779	5,670	16,881
	2000 Census Households	713	5,527	16,175
	1990 Census Households	683	5,121	14,981
	Historical Annual Growth 1990 to 2000	0.44%	0.77%	0.77%
	Historical Annual Growth 2000 to 2010	0.88%	0.26%	0.43%
	Estimated Annual Growth 2010 to 2023	1.24%	0.78%	0.49%
	Projected Annual Growth 2023 to 2028	-0.11%	0.12%	0.11%
	Population per Household	2.69	2.73	2.69
Population by Race	White	92.4%	93.1%	92.7%
	Black or African American	0.5%	0.3%	0.4%
	Asian & Pacific Islander	1.6%	1.7%	1.6%
	Other Races	4.1%	3.1%	3.6%
	Hispanic Population	1.4%	1.7%	1.8%
Income	Average Household Income	\$236,635	\$248,356	\$233,384
	Median Household Income	\$167,596	\$165,224	\$159,137
	Per Capita Income	\$88,058	\$90,906	\$86,528
Education (Age 25+)	Elementary	0.4%	0.5%	0.9%
	Some High School	1.0%	0.8%	0.9%
	High School Graduate	8.5%	9.5%	11.4%
	Some College	12.9%	9.3%	9.6%
	Associates Degree Only	7.7%	7.1%	7.8%
	Bachelors Degree Only	40.0%	41.7%	38.5%
	Graduate Degree	29.5%	31.0%	30.9%
Business	Number of Businesses	130	486	1,521
	Total Number of Employees	879	3,590	13,999
	Employees per Business	6.75	7.39	9.20
	Residential Population per Business	19.06	35.55	32.15

This report was produced using data from private and government sources deemed to be reliable and is herein provided without representation or warranty.