

# NORTH POINTE PLAZA

NORTH CHARLESTON, SC



## SIZE

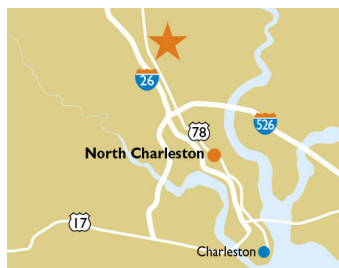
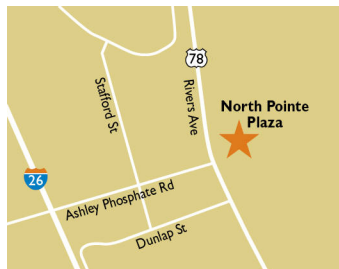
373,520 square feet

## DEMOGRAPHICS

	1 mile	3 mile	5 mile
<b>Population</b>	8,478	60,252	142,664
<b>Households</b>	3,744	23,797	55,557
<b>Median HH Income (\$)</b>	55,439	61,324	64,709

## MAJOR TENANT(S)

Walmart



## LOCATION

7580 Rivers Avenue | North Charleston, SC 29406

## PROPERTY HIGHLIGHTS

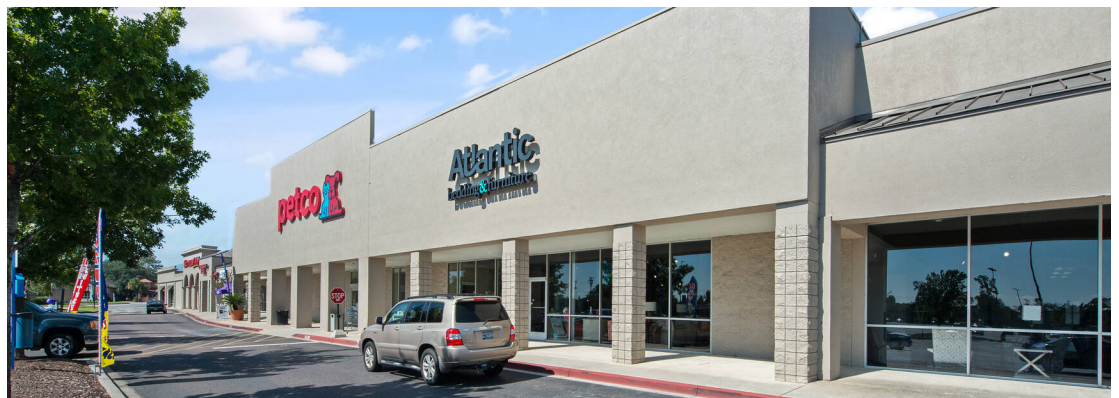
- Anchored by a Walmart Supercenter, the leading grocer in the Charleston area
- Additional tenants include Petco, CATO, and Pizza Hut
- Located in North Charleston, a suburb nine miles outside of downtown Charleston with a population exceeding 60,200 in a three-mile radius
- The center is located on Rivers Avenue, which benefits from over 38,300 vehicles per day

## LEASING CONTACT

Mark Porter  
Mobile (803) 338-6004  
mporter@phillipsedison.com

## MORE INFO

[www.phillipsedison.com](http://www.phillipsedison.com)



**PHILLIPS EDISON & COMPANY®**

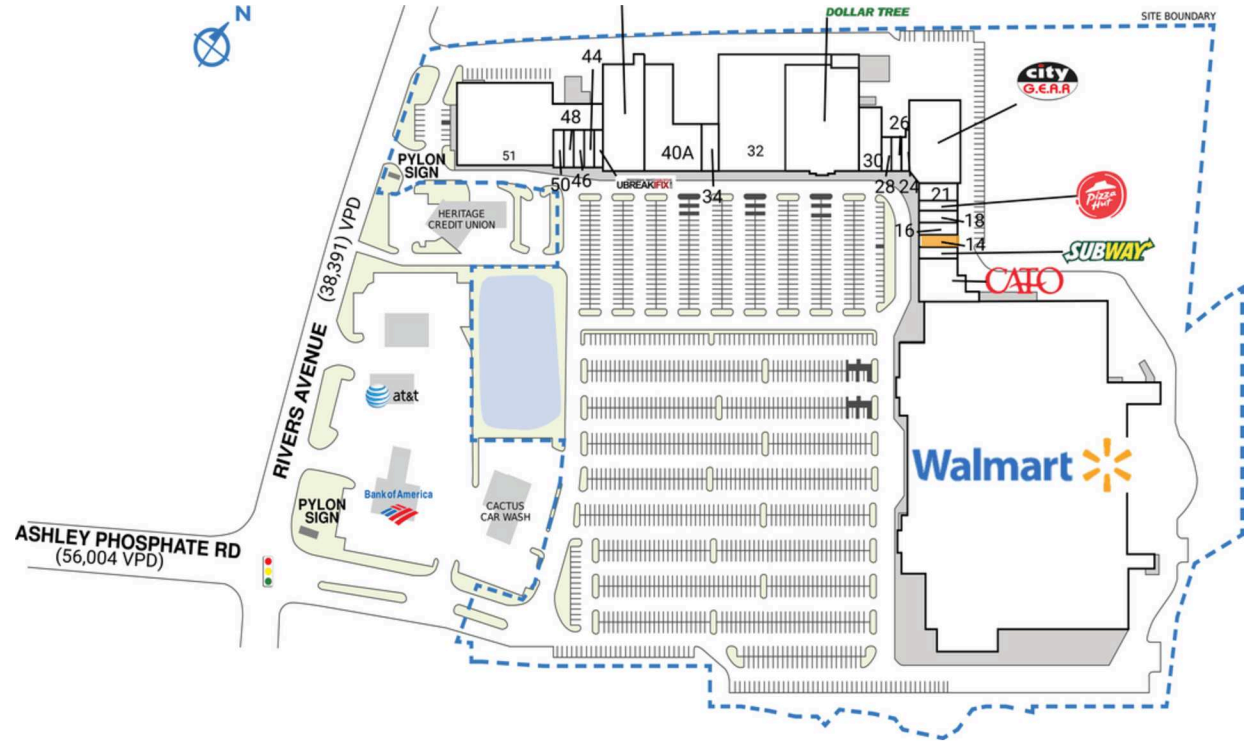
# NORTH POINTE PLAZA

7580 Rivers Avenue | North Charleston, SC 29406

SPACE	TENANT	SQ. FT.			
			32	FIT Life Health Clubs	25,574 SF
Shad I	FIT Life Health Clubs		34	ABC Package Store	2,400 SF
01	Walmart	222,904 SF	40	Petco	14,112 SF
06	CATO	6,007 SF	40A	Atlantic Bedding & Furniture	14,498 SF
12	Subway	1,226 SF	42	uBreakiFix	750 SF
14	AVAILABLE	1,574 SF	44	VIP @ NorthPoint Barbershop & Salon	1,000 SF
16	No. 1 Kitchen	1,400 SF	46	Divine Designs	1,000 SF
18	J Beauty Supply	1,400 SF	48	Liberty Tax	750 SF
20	Pizza Hut	1,050 SF	50	Dab City Tobacco & Vape	950 SF
21	MobileTek	2,450 SF	51	Carpet To Go Flooring	29,525 SF
22	City Gear	13,000 SF		<b>TOTAL SQ. FT.</b>	<b>373,520</b>
24	Magic Nails	900 SF			
26	Acceptance Insurance	900 SF			
28	Charleston Self Defense Academy	1,200 SF			
30	New Yorker Menswear	5,000 SF			
31	Dollar Tree	23,950 SF			

SITE LEGEND	
<span style="display:inline-block; width:15px; height:15px; background-color:orange; border:1px solid black;"></span> Available	<span style="display:inline-block; width:15px; height:15px; background-color:gray; border:1px solid black;"></span> Occupied
<span style="display:inline-block; width:15px; height:15px; background-color:lightblue; border:1px solid black;"></span> Leased (not occupied)	<span style="display:inline-block; width:15px; height:15px; background-color:lightgray; border:1px solid black;"></span> Owned by Others
<span style="display:inline-block; width:15px; height:15px; border:2px dashed blue;"></span> Site Boundary	



DISCLAIMER - This site plan is for general information purposes only and is not intended to constitute representations and warranties by Landlord as to the ownership of the real property depicted herein or the identity or nature of any occupants thereof.

# NORTH POINTE PLAZA

7580 Rivers Avenue | North Charleston, SC 29406



# Demographic Summary Report

1990 - 2000 Census, 2023 Estimates & 2028 Projections

Calculated using TAS Retrieval Retrieval

Apr 17, 2024



Latitude: 32.939651

Longitude: -80.038463

North Pointe Plaza North Charleston, SC		1.00 Mile Radius	3.00 Mile Radius	5.00 Mile Radius
Population	Q4 2023 Estimated Population	8,478	60,252	142,664
	2028 Projected Population	8,340	58,120	139,577
	2010 Census Population	6,713	51,133	118,222
	2000 Census Population	5,746	40,992	102,762
	1990 Census Population	4,996	39,128	102,313
	Historical Annual Growth 1990 to 2000	1.41%	0.47%	0.04%
	Historical Annual Growth 2000 to 2010	1.57%	2.24%	1.41%
	Estimated Annual Growth 2010 to 2023	1.71%	1.20%	1.38%
	Projected Annual Growth 2023 to 2028	-0.33%	-0.72%	-0.44%
	Median Age	32.5	34.6	35.0
Households	Q4 2023 Estimated Households	3,744	23,797	55,557
	2028 Projected Households	3,689	22,974	54,371
	2010 Census Households	2,897	19,673	44,821
	2000 Census Households	2,669	16,060	38,202
	1990 Census Households	2,126	14,425	36,184
	Historical Annual Growth 1990 to 2000	2.30%	1.08%	0.54%
	Historical Annual Growth 2000 to 2010	0.82%	2.05%	1.61%
	Estimated Annual Growth 2010 to 2023	1.88%	1.39%	1.57%
	Projected Annual Growth 2023 to 2028	-0.29%	-0.70%	-0.43%
	Population per Household	2.26	2.49	2.51
Population by Race	White	37.8%	44.0%	45.7%
	Black or African American	35.4%	30.8%	31.1%
	Asian & Pacific Islander	3.6%	3.8%	3.4%
	Other Races	3.5%	5.2%	5.5%
	Hispanic Population	19.7%	16.3%	14.3%
Income	Average Household Income	\$71,774	\$77,519	\$82,364
	Median Household Income	\$55,439	\$61,324	\$64,709
	Per Capita Income	\$31,738	\$30,943	\$32,589
Education (Age 25+)	Elementary	7.5%	5.5%	4.7%
	Some High School	6.0%	7.0%	7.2%
	High School Graduate	24.7%	27.2%	27.6%
	Some College	25.2%	22.4%	23.2%
	Associates Degree Only	14.4%	10.5%	10.8%
	Bachelors Degree Only	14.9%	19.0%	18.2%
	Graduate Degree	7.3%	8.4%	8.4%
Business	Number of Businesses	400	1,868	4,371
	Total Number of Employees	6,906	33,549	84,510
	Employees per Business	17.25	17.96	19.34
	Residential Population per Business	21.18	32.26	32.64

This report was produced using data from private and government sources deemed to be reliable and is herein provided without representation or warranty.